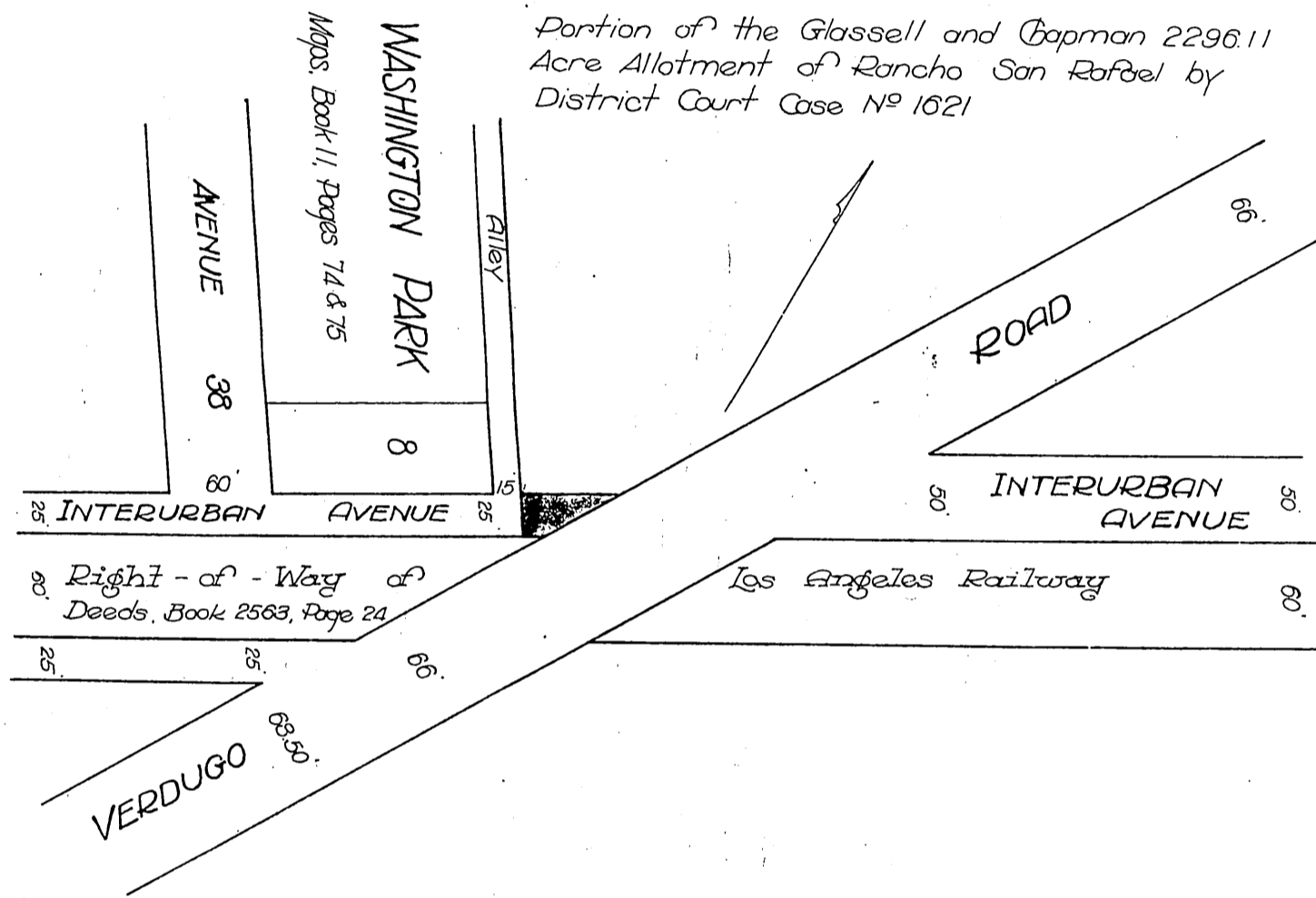


Title Guarantee and Trust Company
 - to -
 City of Los Angeles



Portion of the Glassell and Chapman 2296.11 Acre Allotment of Rancho San Rafael by District Court Case No 1621

INTERURBAN AVENUE between AVENUE 38 and VERDUGO ROAD

Homer Hamlin

City Engineer

Scale 1 inch = 100 feet

Recorded Aug. 23, 1916
 A-224

D:22-62.