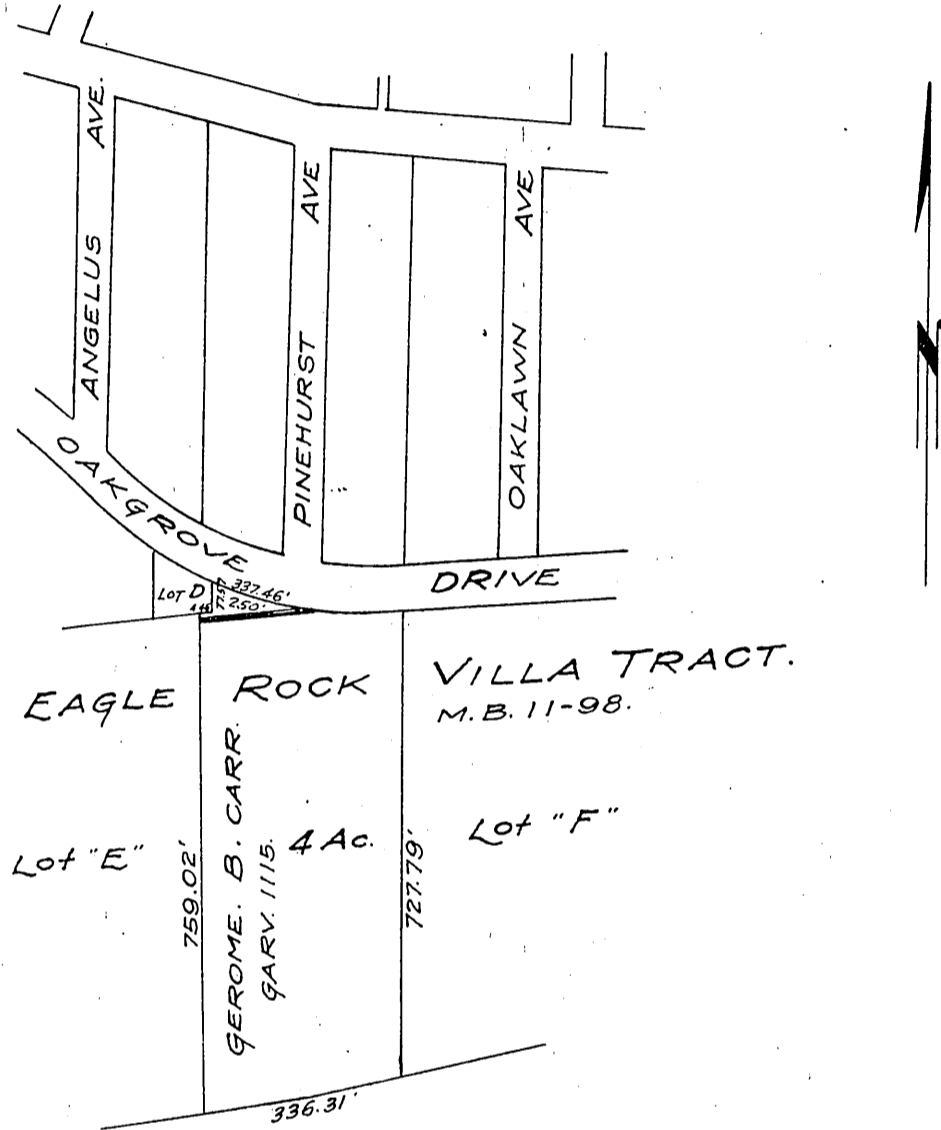


Gerome B. Carr  
to  
The Pacific Light & Power Corp.

1013-B-95



— = Location of Transmission Line —

— SKETCH —  
SHOWING POLE LINE ACROSS  
PROPERTY OF GEROME B. CARR  
— EAGLE ROCK DIST —

PACIFIC LIGHT and POWER CORP.  
LOS ANGELES, CALIFORNIA

By \_\_\_\_\_ Traced by N. C. L.  
Checked \_\_\_\_\_ Scale 1" = 300 Ft.  
App. C. E. H. Date Sept. 12<sup>th</sup> 1913

1013-B-95

Comp. K.M.D.  
H.W.S.

Recorded - Aug. 16, 1916.