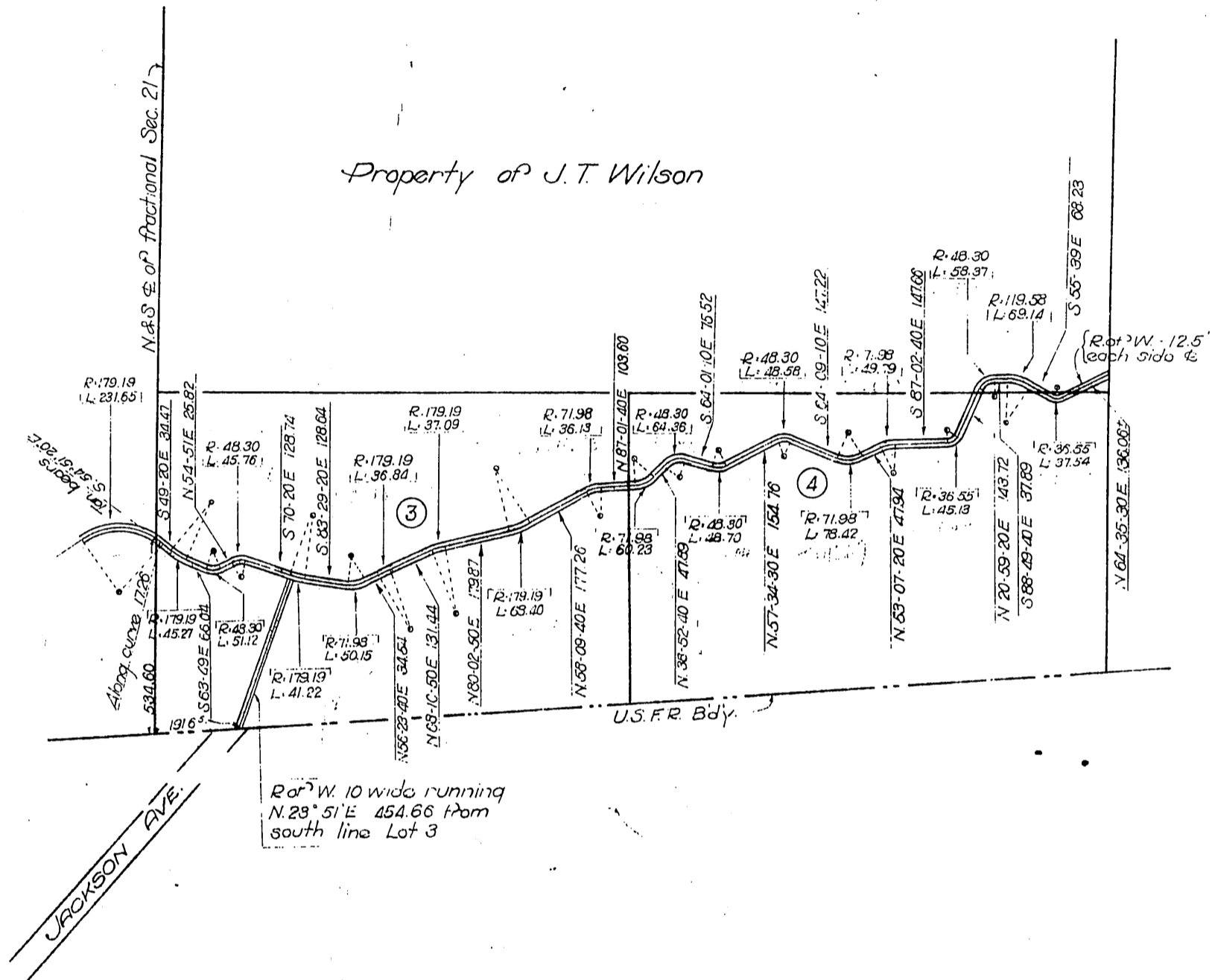


John T. Wilson } to The City of Los Angeles
Grace L. Wilson }



Plat showing right of way for Maclay High Line thru S.E. fract. 1/4 of fractional Sec. 21 T. 3 N. R. 15 W. S.B. Meridian -
Scale 1" = 400' July - 17 - 1916

Recorded Aug. 28, 1916