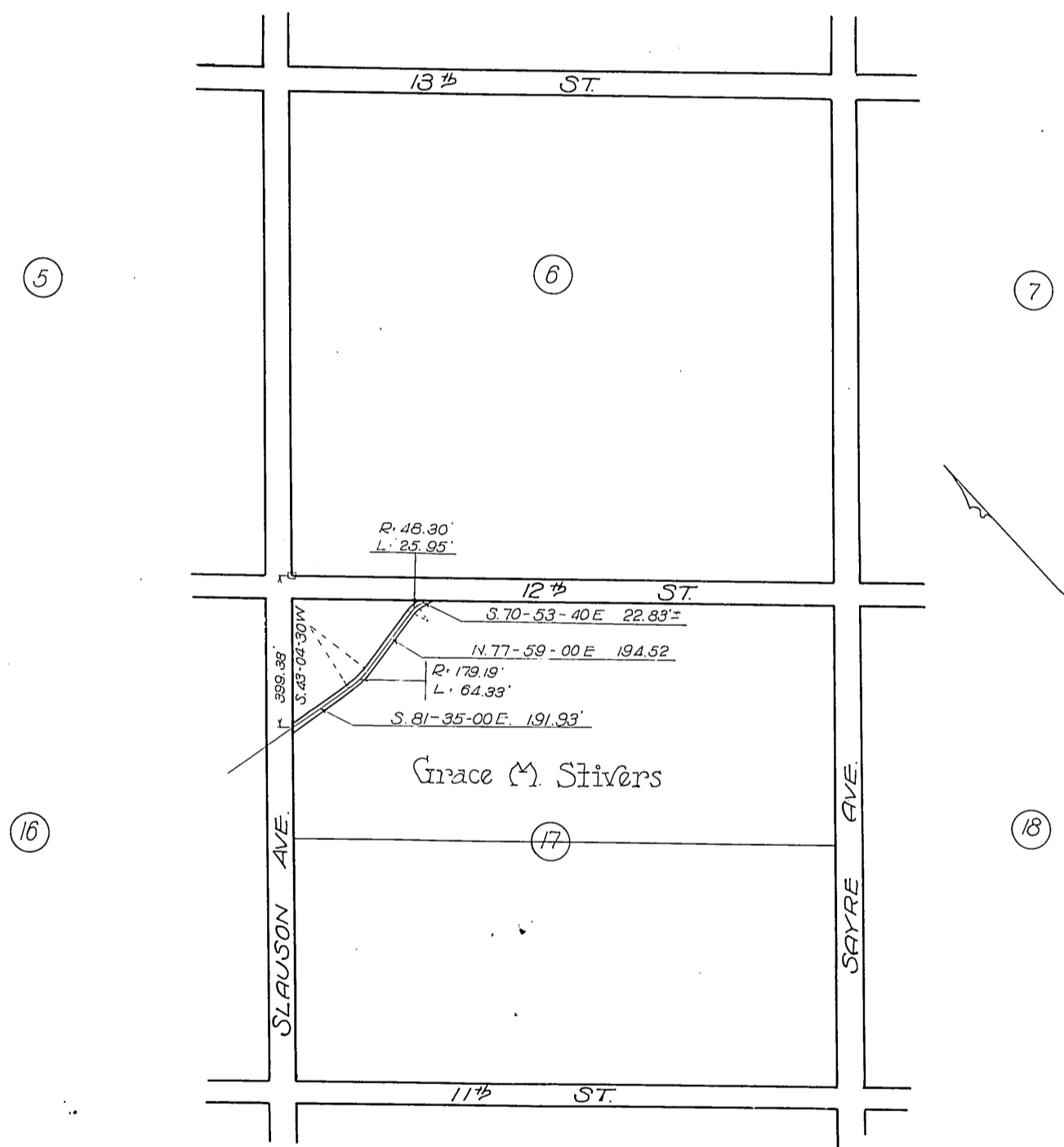


Grace M. Stivers  
-- to --  
The City of Los Angeles

CITY OF LOS ANGELES  
DEPARTMENT OF PUBLIC SERVICE  
BUREAU OF  
WATER WORKS AND SUPPLY  
ENGINEERING DEPARTMENT



Plat showing right of way for MacLay High Line  
through Block 17 Maclay Rancho, Los Angeles Co.  
Scale 1"=400' July 1916.

Recorded Sept. 18, 1916.