

Pacific Electric Railway Company
-to-
County of Los Angeles

65

RANCHO

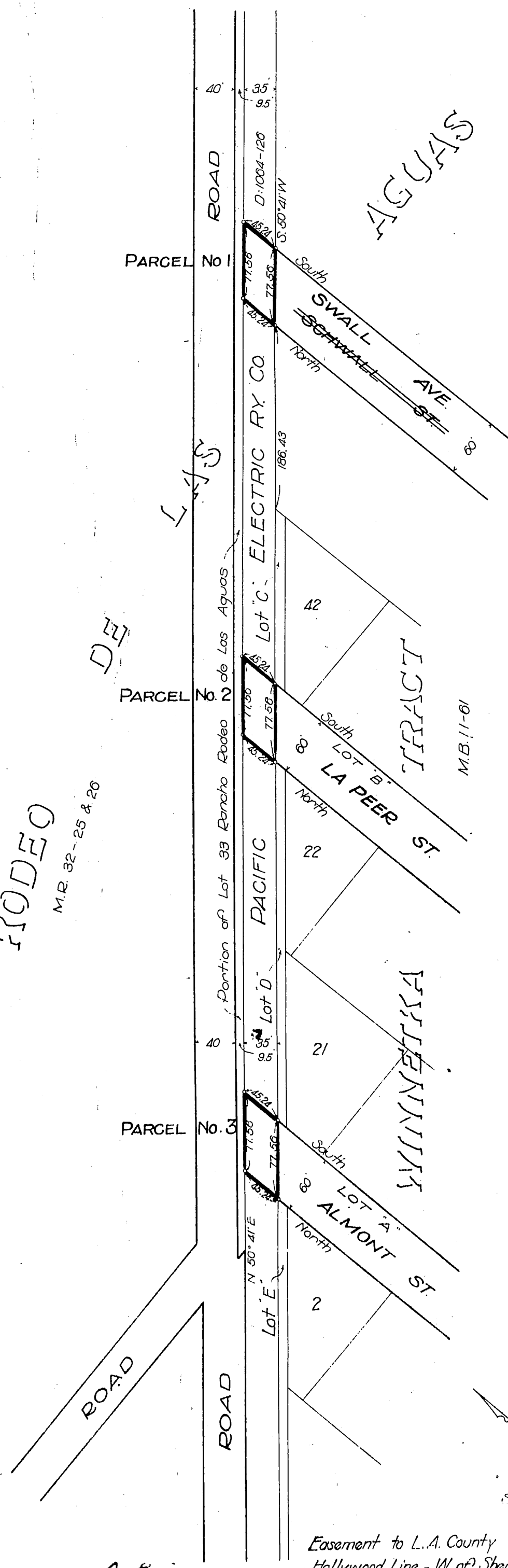
RODEO

M.P. 32-25 & 26

DE

Las Vegas

AGUAS



Santa Monica Blvd. name estab. D:13-159 R.B. 24-188
Vac. par. Almont St, La Peer St and Robertson Blvd. D:46-113 O.R. 7410-230

Scale 1"=100' Apr 21, 1916

Easement to L.A. County
Hollywood Line - W. of Sherman

Recorded Oct. 4, 1916
D:24-149

Sht. 22