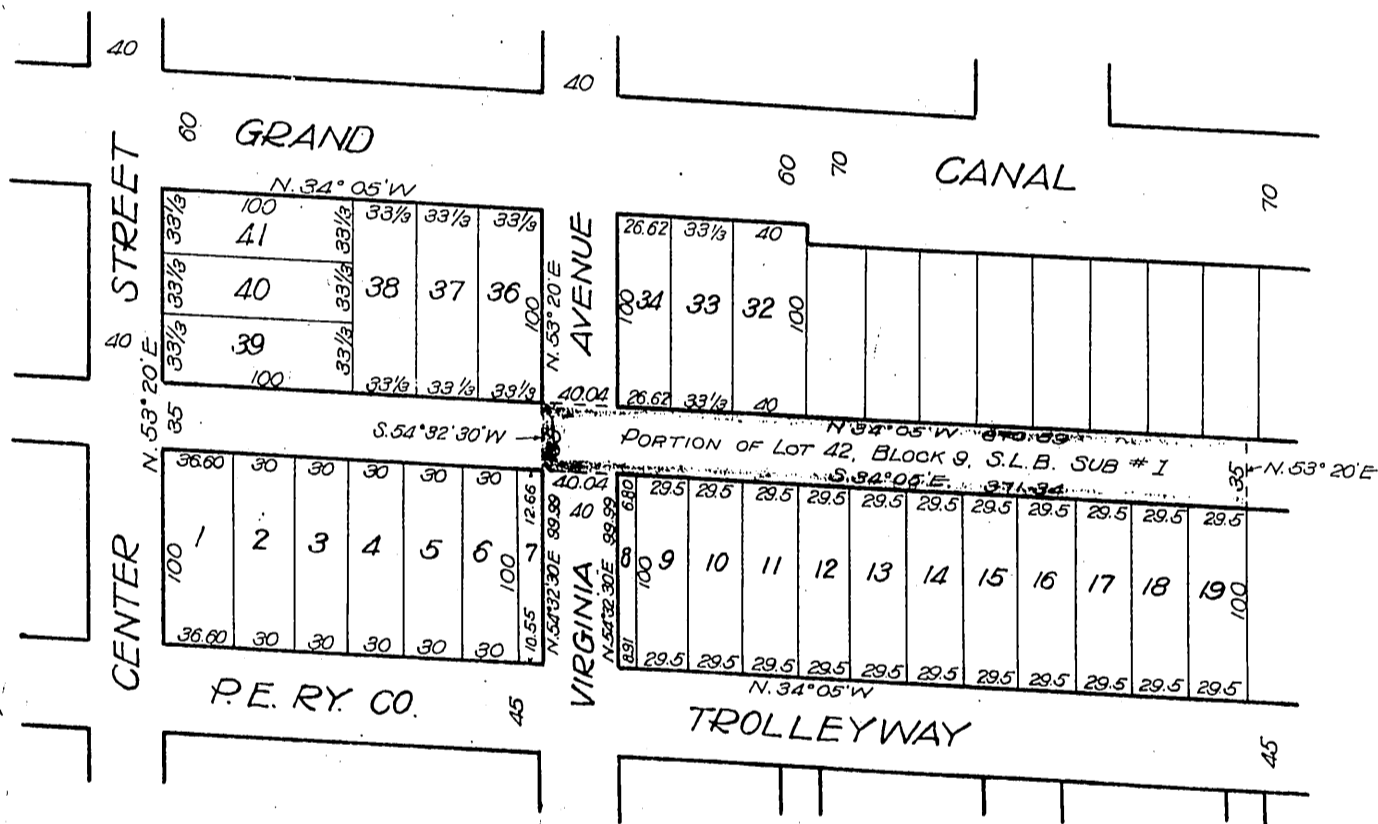


74

Short Line Beach Land Company
- to -
The City of Venice

MAP
OF BLOCK 9
SHORT LINE BEACH SUBDIVISION No. 1
showing portion of Lot 42 to be deeded to the City of Venice, California
August, 1916.
W.F. Crawford, City Engr.
Scale: 100ft. = 1 in.



Recorded Sept. 8, 1916

D: 9-155 A-138