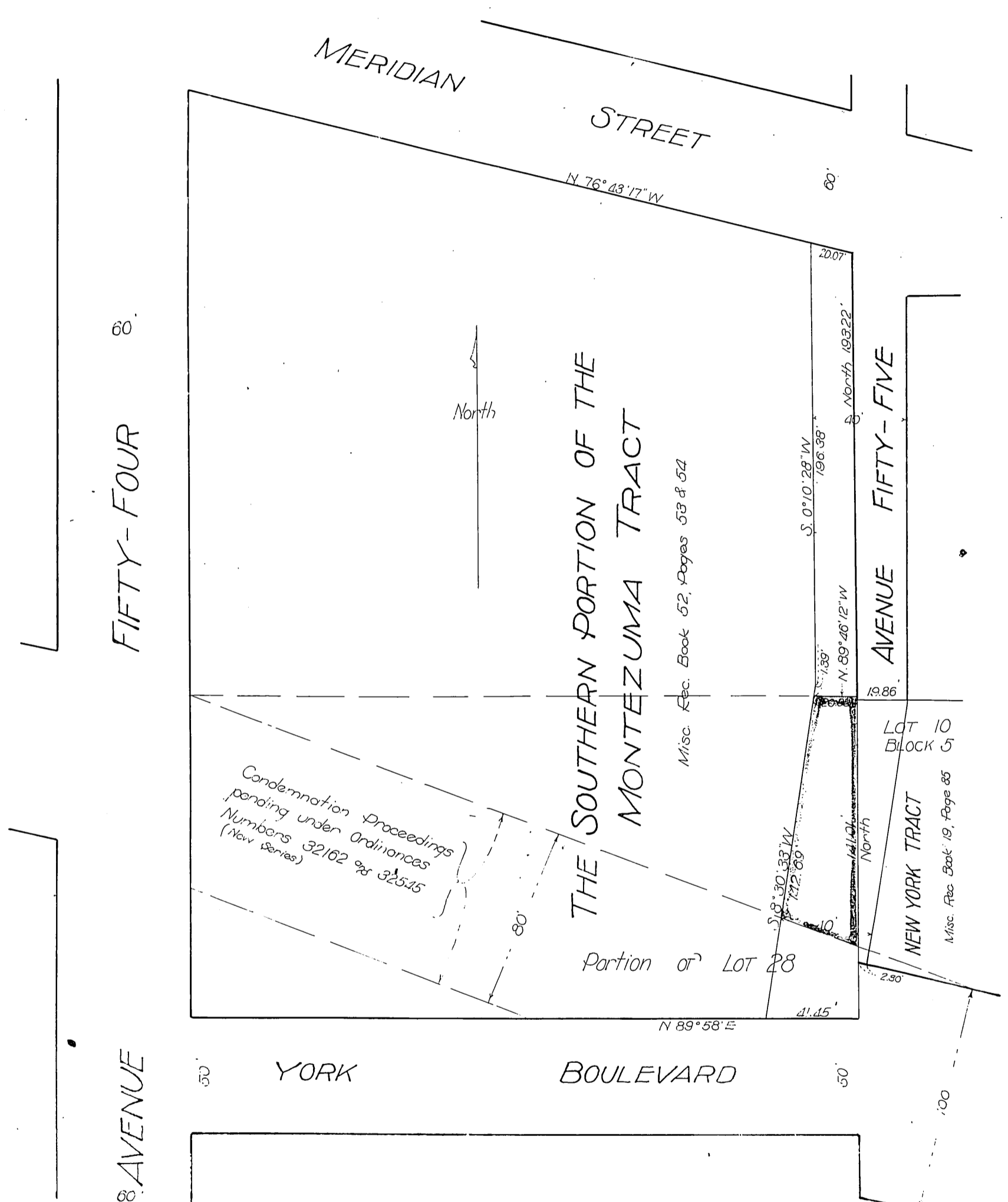


Los Angeles Land Company
City of Los Angeles



Condemnation Proceedings
pending under Ordinances
Numbers 32162 & 32515
(New Series)

Part of LOT 28

LOT 10
BLOCK 5

NEW YORK TRACT
Misc. Rec. Book 19, Page 85

A portion of AVENUE FIFTY-FIVE
Homer Hamlin, City Engineer August 1916
Scale 1 inch = 50 feet

See C.F. 8-46
New York Ave. vac. Ord. 39, 348
vacated per York Ave. deeded to, C. D. 29-229 O.R. 405-10

Recorded Sept. 8, 1916
D: 20-229
A-225