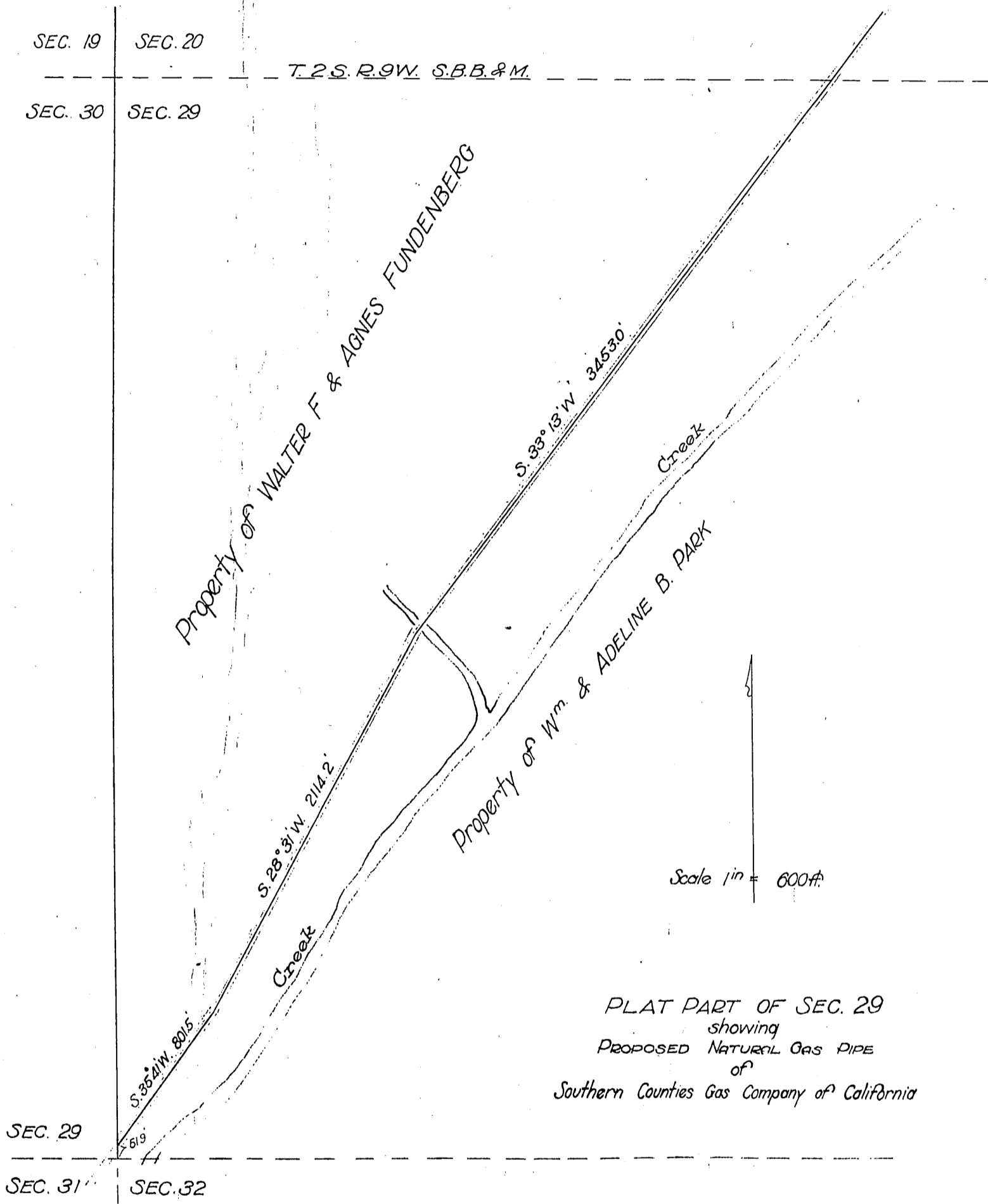


Lee W. Butler  
- to -  
Southern Counties Gas Company of California



PLAT PART OF SEC. 29  
showing  
PROPOSED NATURAL GAS PIPE  
of  
Southern Counties Gas Company of California

LEGEND

Proposed Gas Line

Property Line

Traveled Road

Section Lines

Recorded Oct. 9, 1910

At 3 a. m.