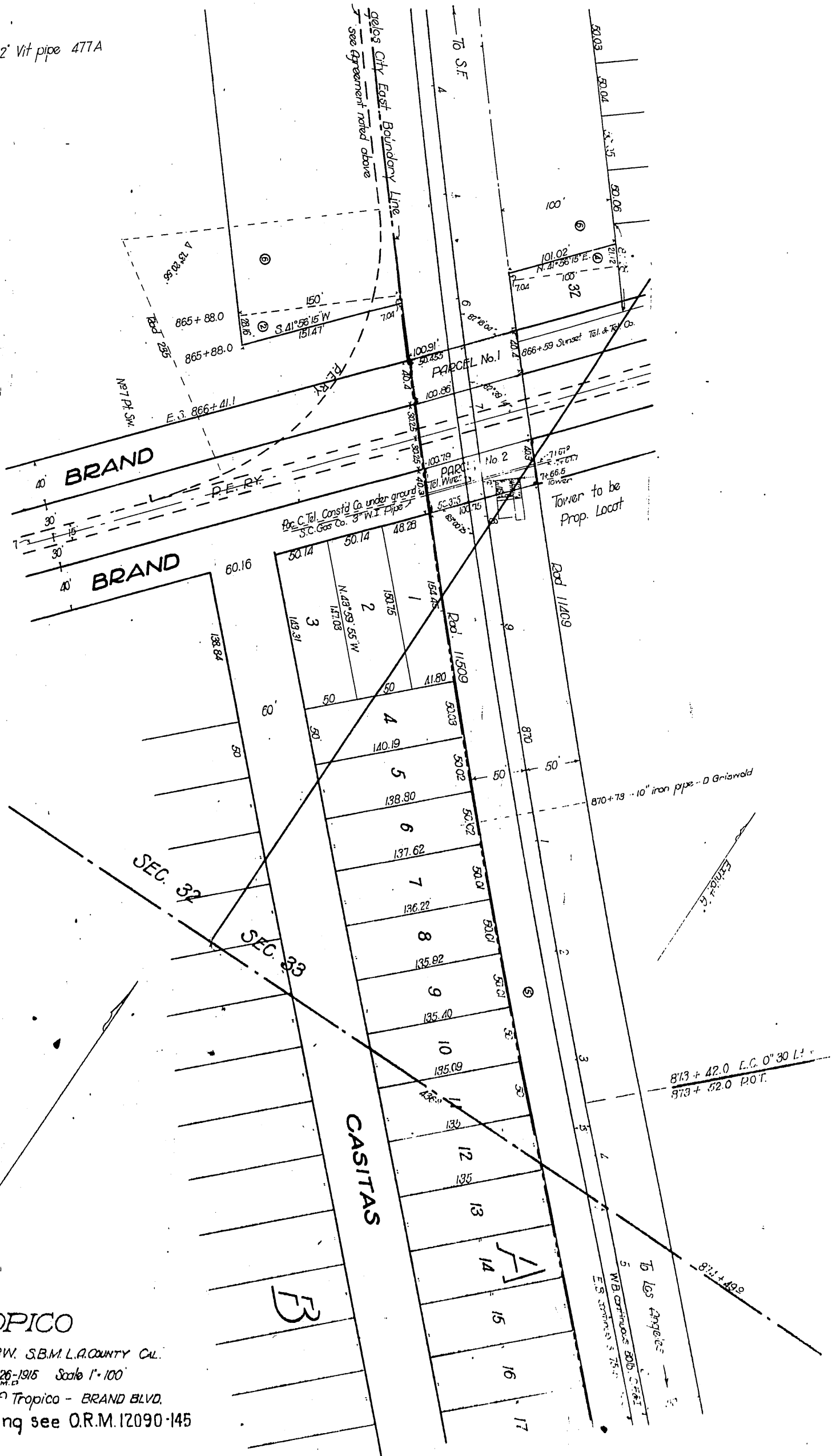


Southern Pacific Railroad Co. } to City of Tropic
Southern Pacific Co. }

93

3+22.6 12" Vit pipe 477A



TROPICO

SEC. 32-33 T.1N. R.13W. S.B.M. L.A. COUNTY CAL.

Los Angeles Cal 5-26-1915 Scale 1"=100'

Easement to City of Tropic - BRAND BLVD.

For further widening of Xing see O.R.M. 12090-145

Recorded Nov. 17, 1916

D: 9-158

A-222

A-50

Sheet 40

D: 6373