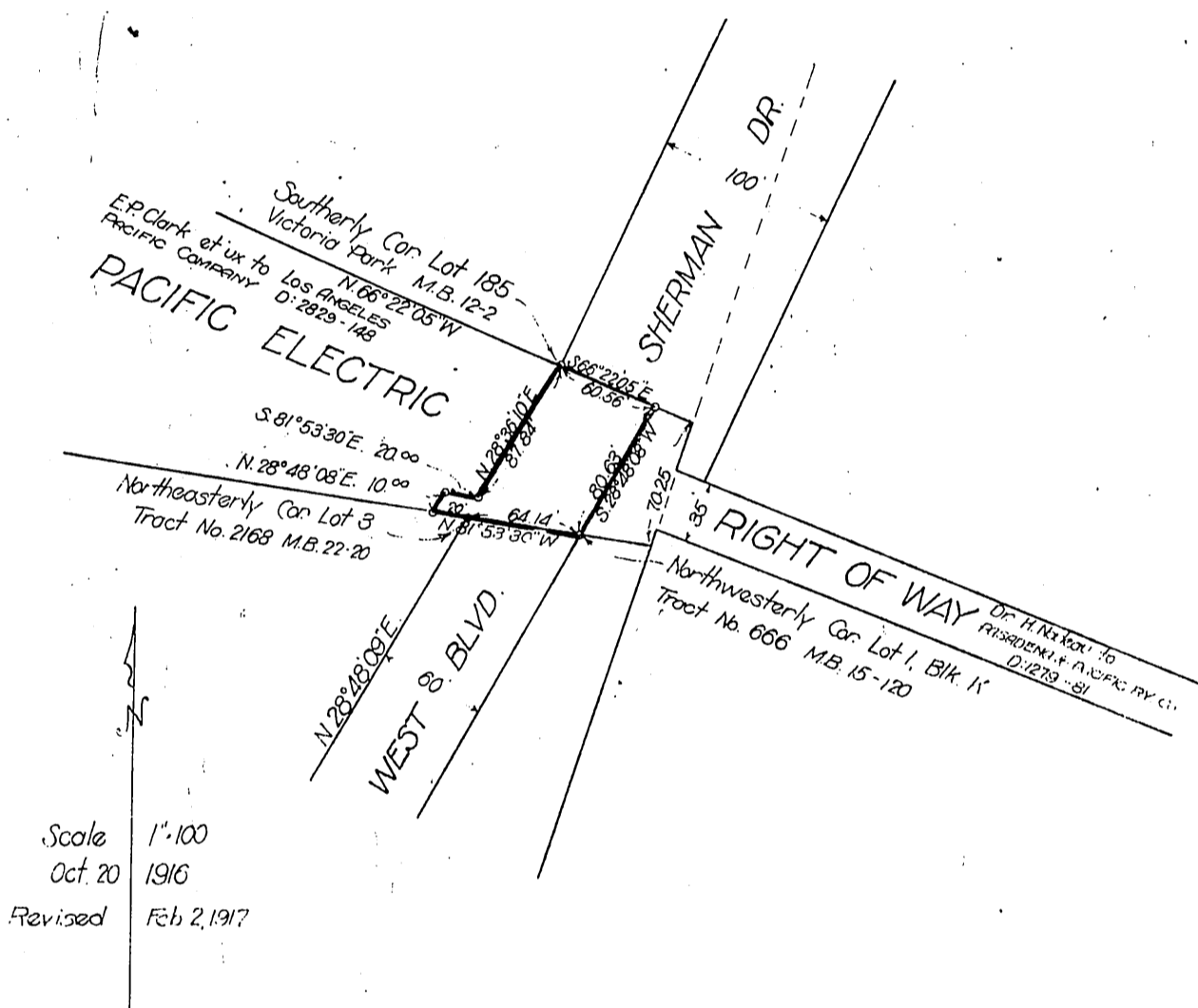


Pacific Electric Railway Company
- to -
City of Los Angeles



Scale 1"=100
Oct 20 1916
Revised Feb 2, 1917

Easement to L.A. City
West 16th St. Line
M.W.K. 276

Sherman Dr. changed to West Blvd. Ord. 54884

Recorded Feb. 26, 1917

A-228

A-215

54+5