

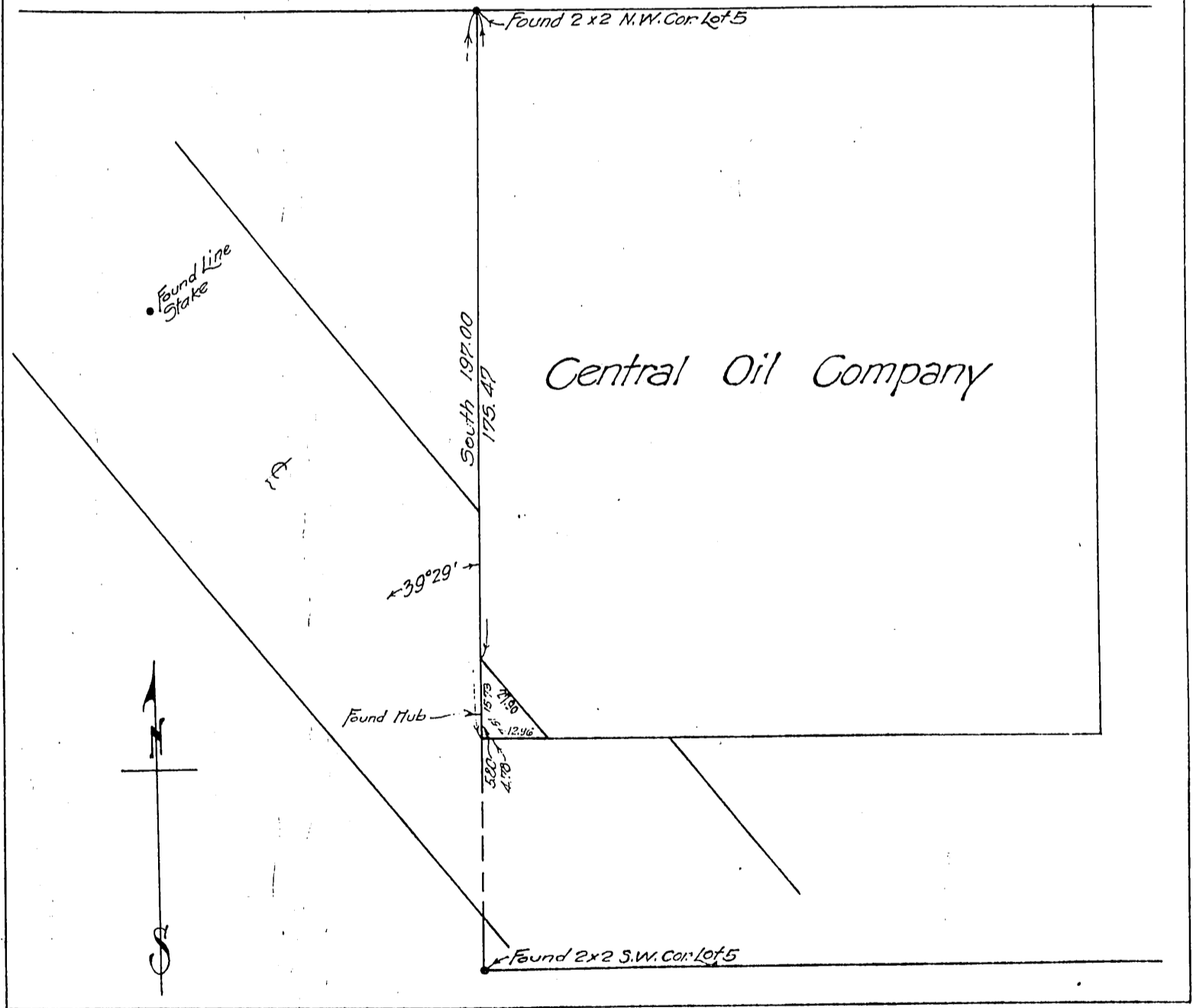
Central Oil Company
to
Los Angeles and Salt Lake Railroad Co.

32

Plat showing land of the
Central Oil Company
to be transferred to the
Los Angeles and Salt Lake Railroad

January 1917 Scale 40'=1" Claude S. Turner
Engr.

Hadley Street



Recorded - Feb. 15, 1917

345

M.T. C.