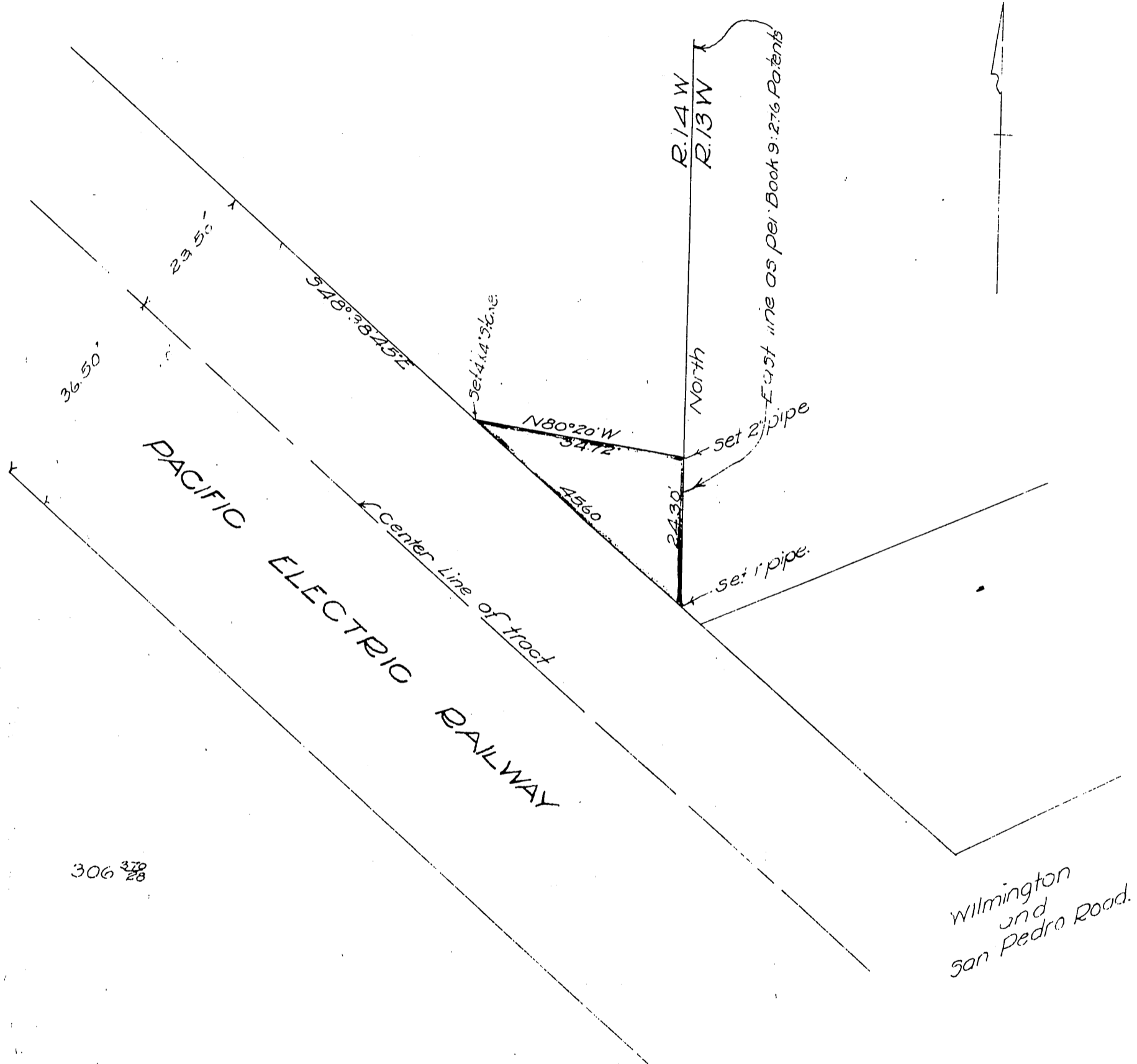


Banning Company-to-Standard Oil Company.

MAP

Of a portion of the land patented to J.B. Danning by patent of the State of California recorded in Patent Book 9 page 276 Records of Los Angeles County in the City of Los Angeles California.
Scale 20 feet to one inch. Surveyed in Sept. 1916 by V. J. Rowan Surveyor.



Recorded Feb. 19, 1917