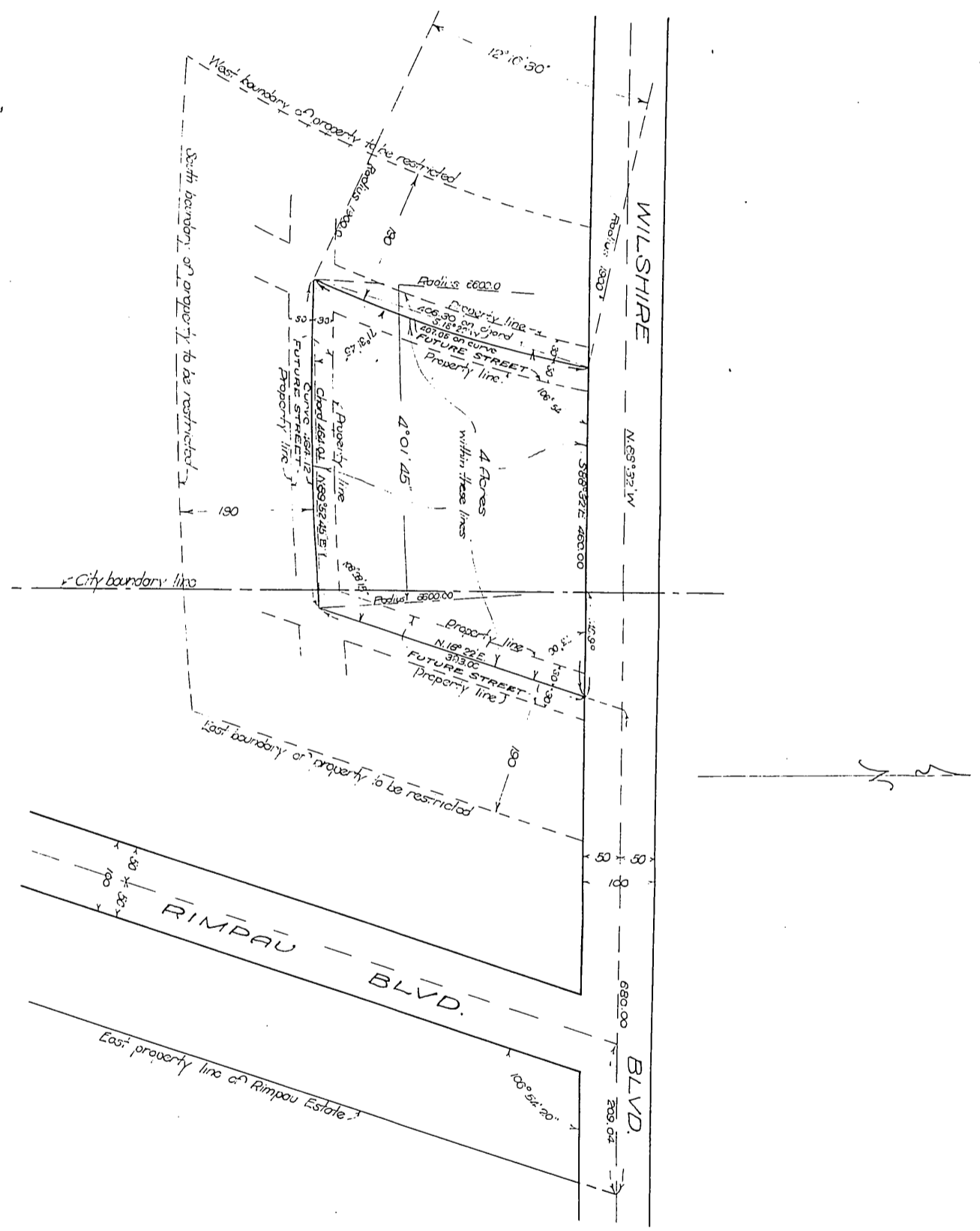




Rimpau Estate Co.
-to-
Susanna B.E. Holmes

PLAT
of
HOLMES PROPERTY
Wilshire Blvd. near Rimpau Blvd.
Los Angeles, Cal.
Surveyed by John Mac Millan, 502 Mason Bldg, Los Angeles, Cal.
Scale 1 inch = 80 feet
March 1917.

Future Streets Half to be dedicated by Rimpau Estate Co. and half by Mrs S.B.E. Holmes



Recorded Apr. 4. 1917

A-1-15