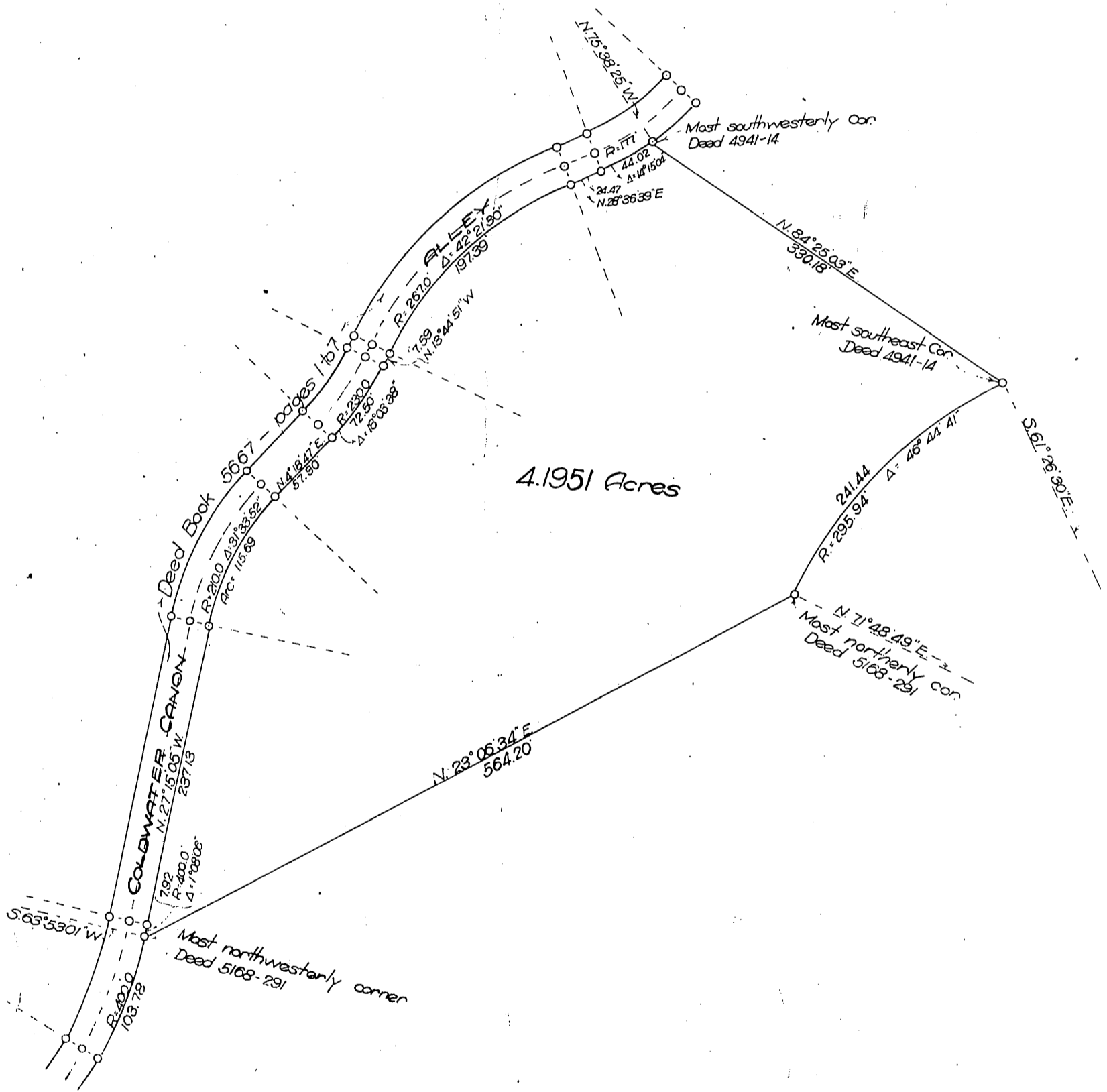


Rodeo Land and Water Company
- to -
Kathryn Nares

MAP
of a portion of LOT "A" of a portion of
RANCHO RODEO DE LAS AGUAS
as per M.R. 107 pages 210, 211 & 212 Records of Los Angeles County, @liff
Scale 1 in = 100 ft. E.E. Spence Engr. April 1917



Recorded Apr. 14, 1917

Suff