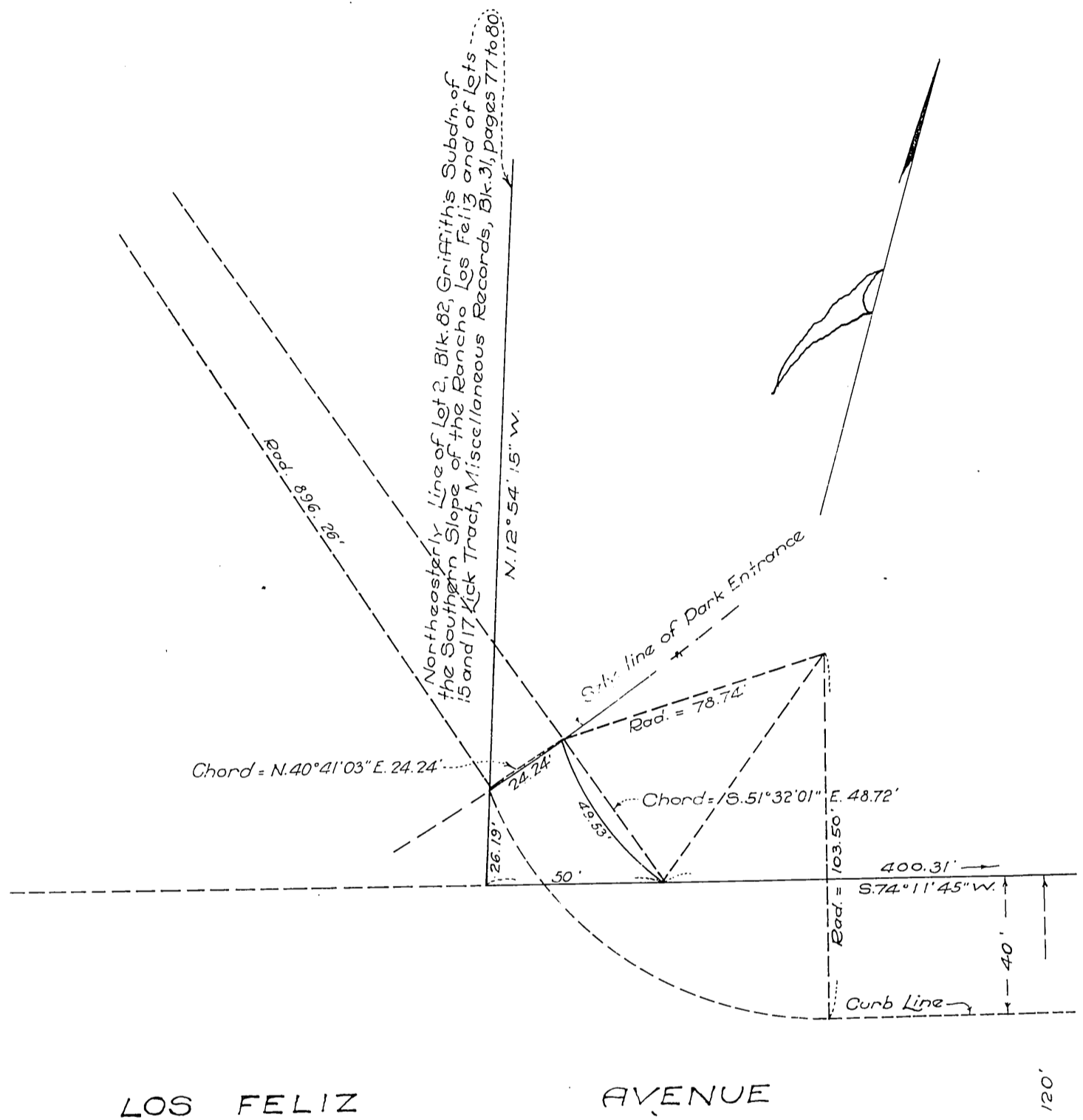


William Mead }  
Nella Wilde Mead } to City of Los Angeles.  
G. J. Griffith



LOS FELIZ AVENUE

Land to be conveyed for portion  
of the western Avenue entrance to

**GRIFFITH PARK**

A. C. Hanson, Engineer July 1917

Note -

Land to be conveyed colored red.

*[Faint, illegible text]*

Recorded Aug. 30, 1917.