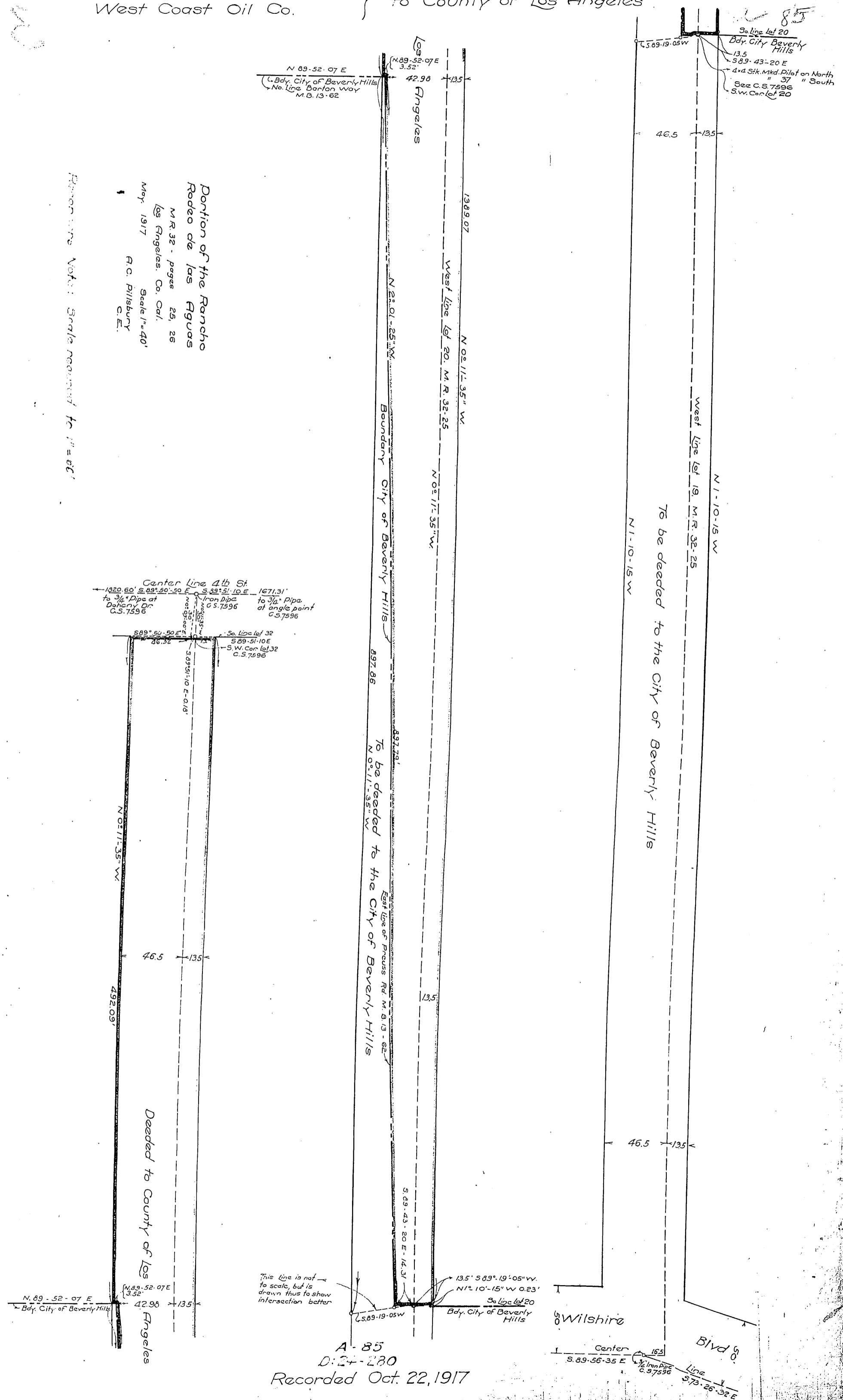


Rodeo Land & Water Co. } to County of Los Angeles
West Coast Oil Co. }

From same notes: Scale measured to 1" = 60'

Portion of the Rancho
Rodeo de las Aguas
M.R. 32 - pages 25, 26
Los Angeles, Co. Cal.
May, 1917
A.C. Pillsbury
C.E.



This line is not to scale, but is drawn thus to show intersection better

A-85
D:24-280
Recorded Oct. 22, 1917

D. 6550