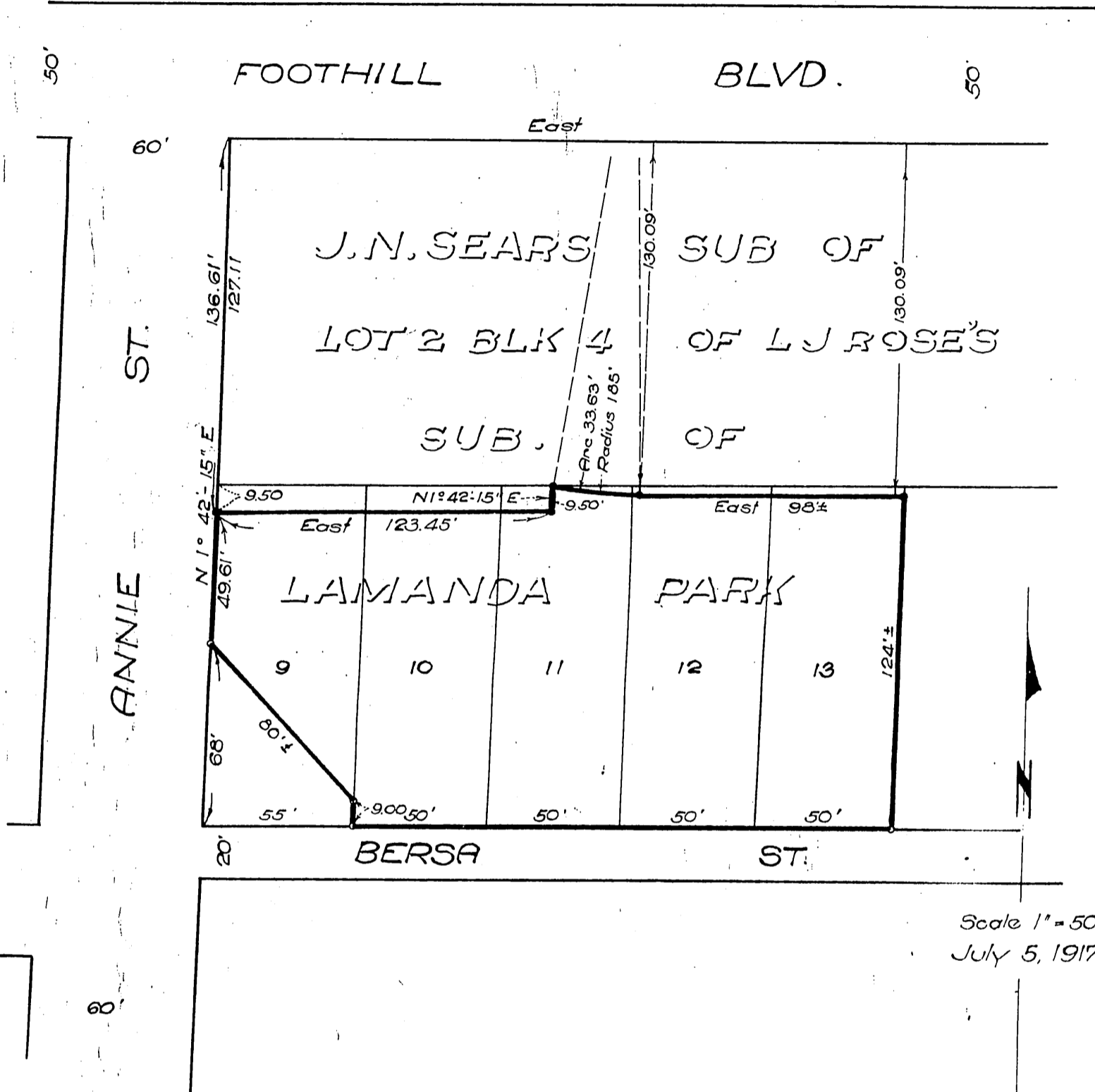


Pacific Electric Land Co.  
to  
Sierra Madre-Lamanda Citrus Ass'n.



Scale 1" = 50'  
July 5, 1917

Bersa St. vacated. ~E:10-118, Ord. 3294

Property to be sold  
MVK 323

Recorded Nov. 28, 1917

A. 302  
Sht. 44