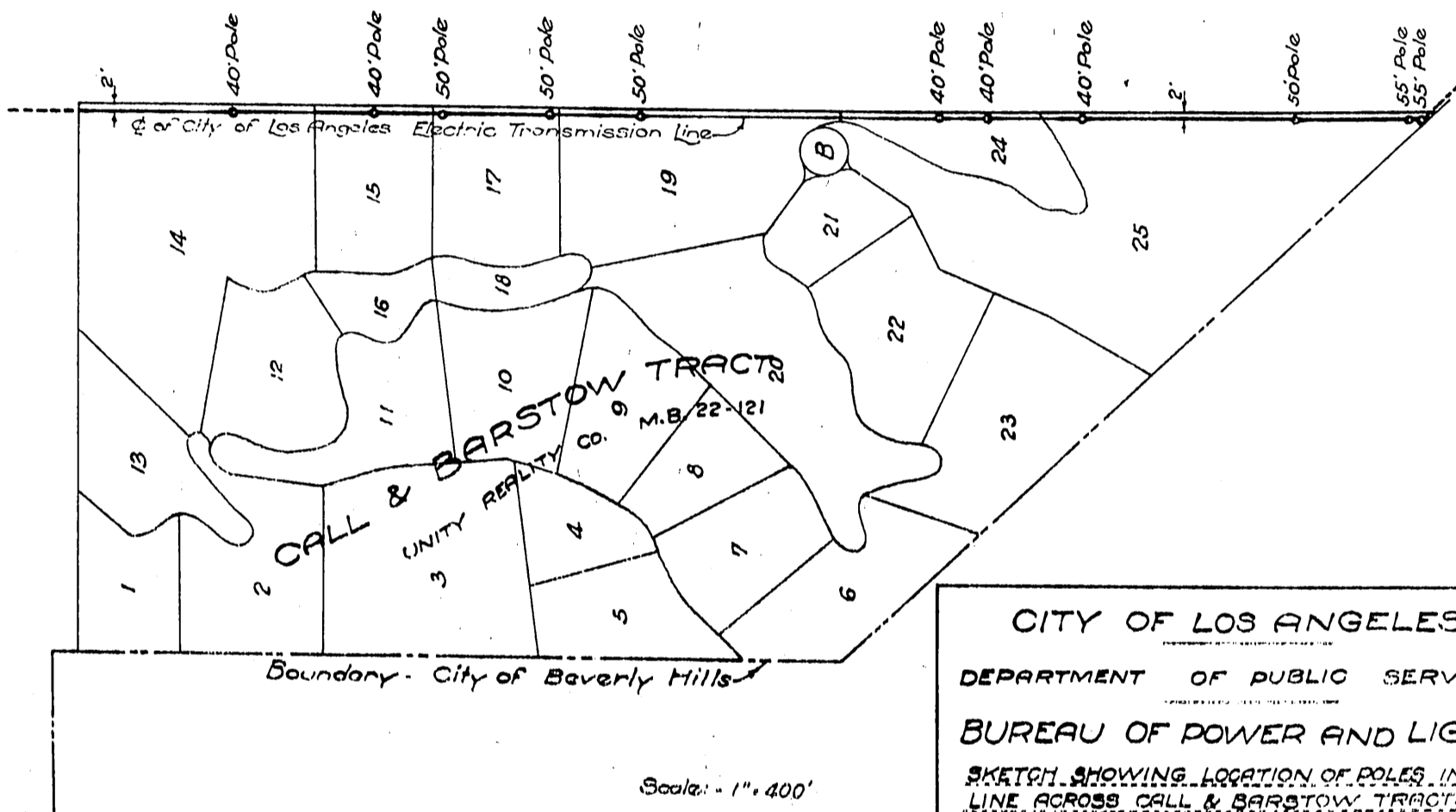


Unity Realty Co.
to
City of Los Angeles.



CITY OF LOS ANGELES
 DEPARTMENT OF PUBLIC SERVICE
 BUREAU OF POWER AND LIGHT
 SKETCH SHOWING LOCATION OF POLES IN TRANSMISSION LINE ACROSS CALL & BARSTOW TRACT
 TRACED BY M.N.G. DATE 3-25-17
 APPROVED _____ CHIEF FIELD ENGINEER

D-323

Recorded Oct. 29, 1917.