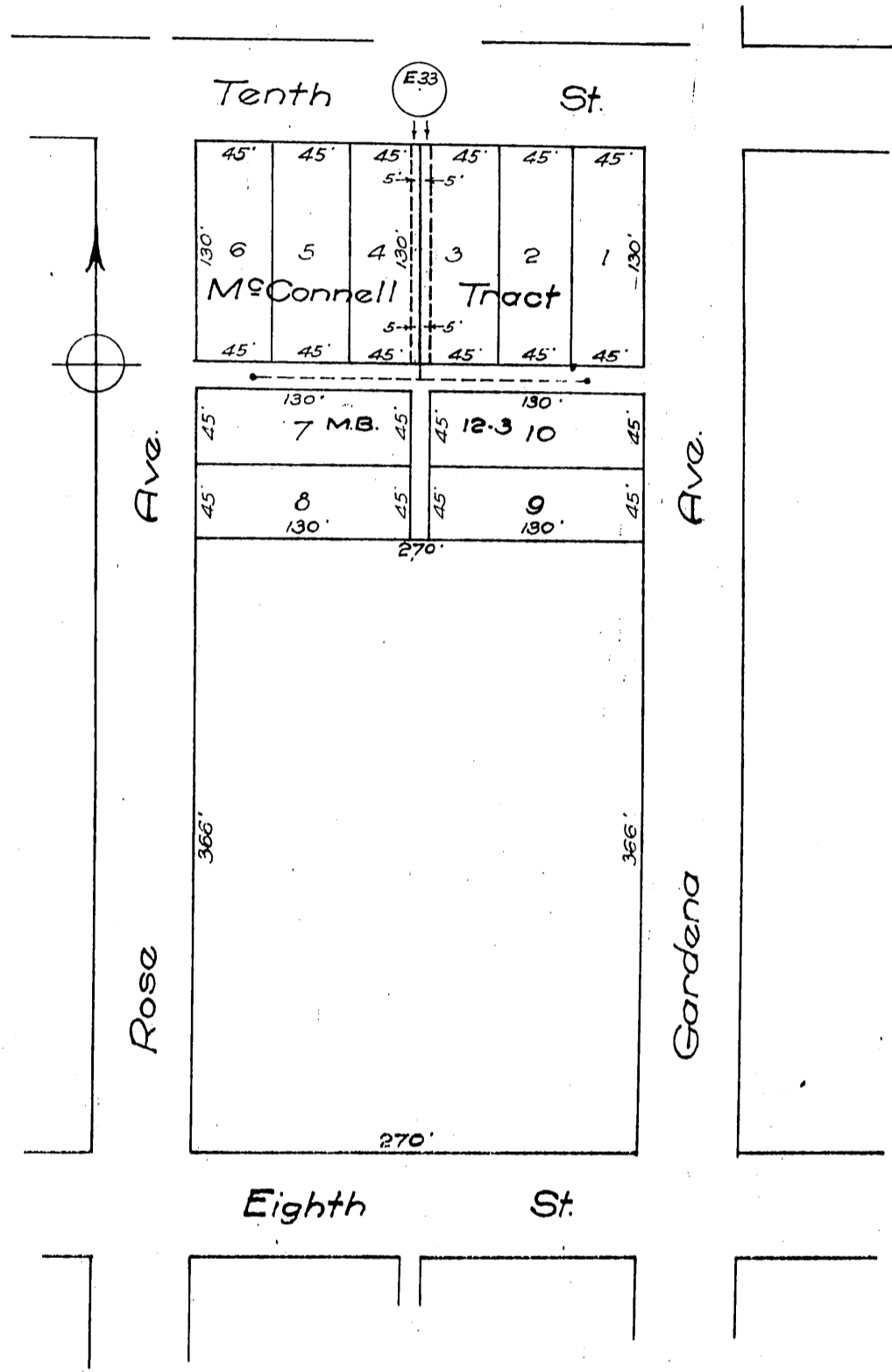


9

Alex K. McConnell }
Mary McConnell } to City of Long Beach.



SKETCH SHOWING
 Portions of Sewer Easements in District N^o 3
 CITY OF LONG BEACH

Dan. S. Miller

City Engr

May 1917.

Remarks: Note: Red ink indicates original
Blue ink indicates present condition

Recorded Sept 24, 1917.