

Mary Agnes Connell }
M. J. Connell } to Edwin T. Earl.

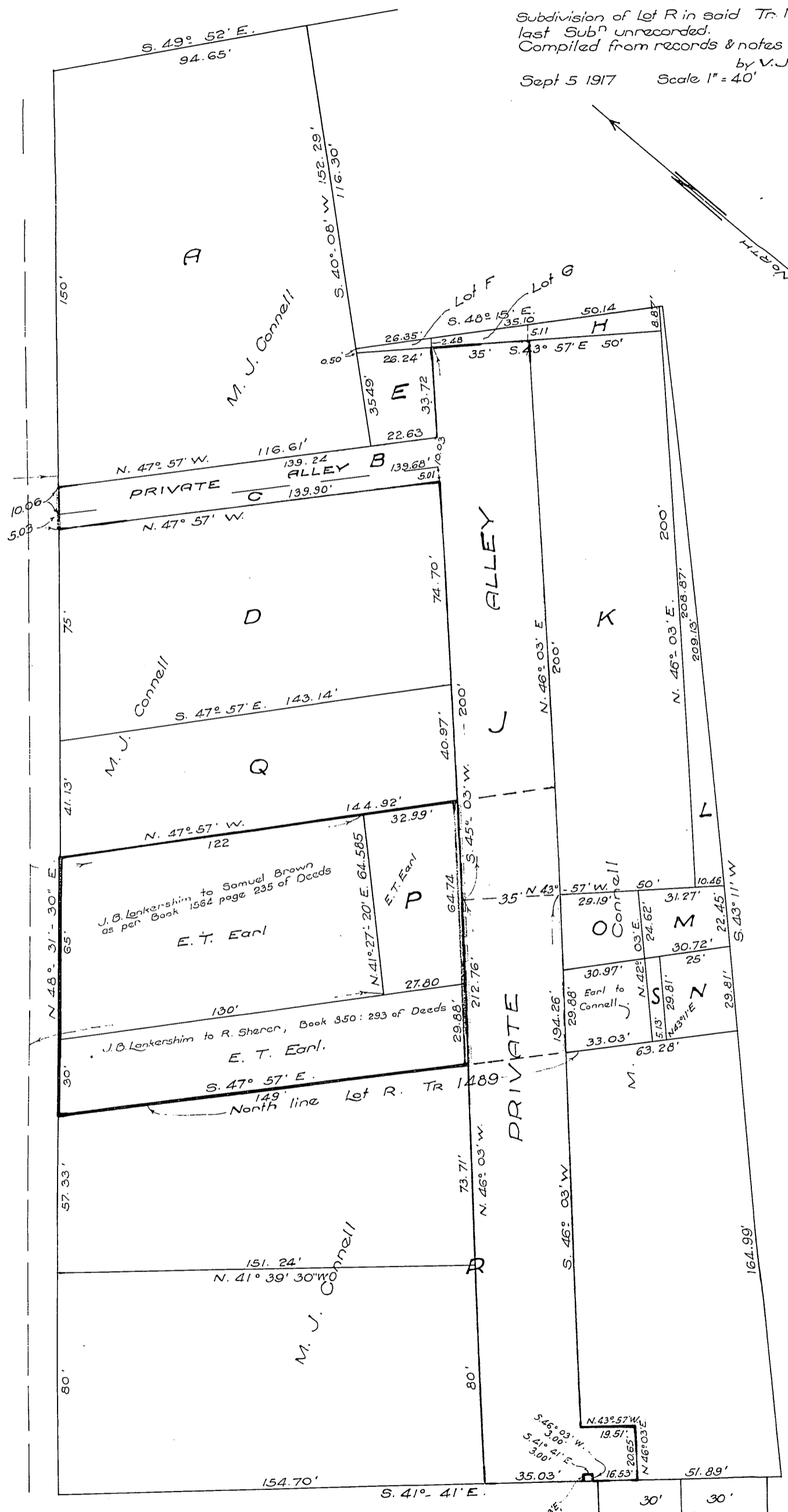
183
Div 15
183

SEVENTH STREET

TRACT 1489 (M.B. 20:3)
and

Subdivision of Lot R in said Tr. No 1489
last Subⁿ unrecorded.
Compiled from records & notes to date.
by V.J. Rowan
Sept 5 1917 Scale 1" = 40'

LOS ANGELES STREET



4 B. Prints Waiting

Recorded Nov. 13, 1917

A-23

55