

Rodeo Land & Water Co.
to
City of Beverly Hills

No. Line Barton Way M.B. 13-62
Bdy. City of Beverly Hills

Angelus

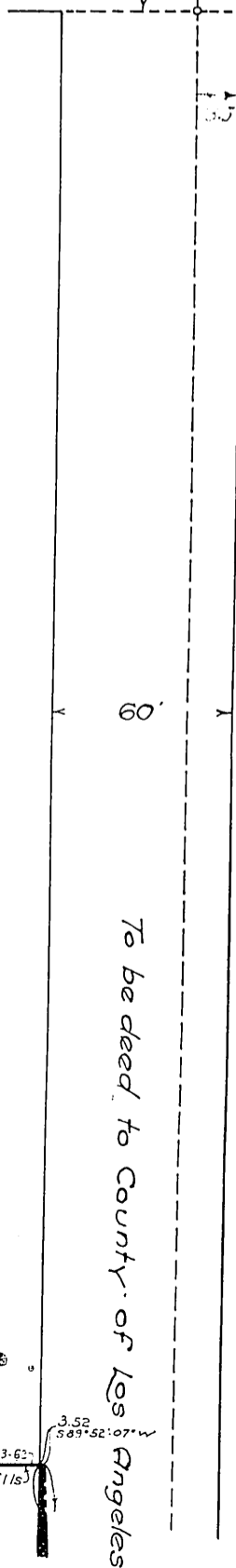
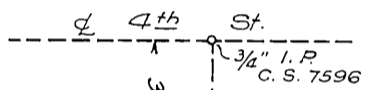
Bdy. City of Beverly Hills

Portion of the Rancho Rodeo de las Aguas
Recorded in M.R. 32-25, 26
Los Angeles Co. Records
Scale 1" = 40'
May 1917
A.C. Pillsbury C.E.

Examiner's Note: Scale reduced to 1" = 50'

Per. in City of Beverly Hills
Vac. by Ord 35 D: 25-62.

First line of Pecos Road
as shown in Map of Beverly (Sheet No 2)
M.B. 13-62 & 63



No. Line Barton Way M.B. 13-62
Bdy. City of Beverly Hills

N 2-01-25 W

897.79

50-11-35 E

897.86

Bdy. City of Beverly Hills

West line lot 20 - M.R. 32-25 & 26 (M.B. 1-570-571)

S 1-10-15 E

909.83

To be deeded to the City of Beverly Hills

916.85

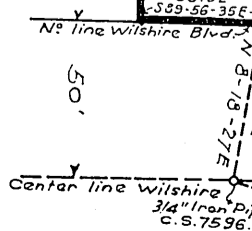
N 1-10-15 W

West line of lot 19 - M.R. 32-25 & 26 (M.B. 1-570-571)

4 x 4 Stk. Mkd. Pilot on N° 57 " 50
S.W. Cor. lot 20
M.R. 32-25

So. Line lot 20
M.R. 32-25

Bdy. City of Beverly Hills



D: 25-55

Recorded Aug. 23, 1917

A-5-4-85

D: 6580

57+22