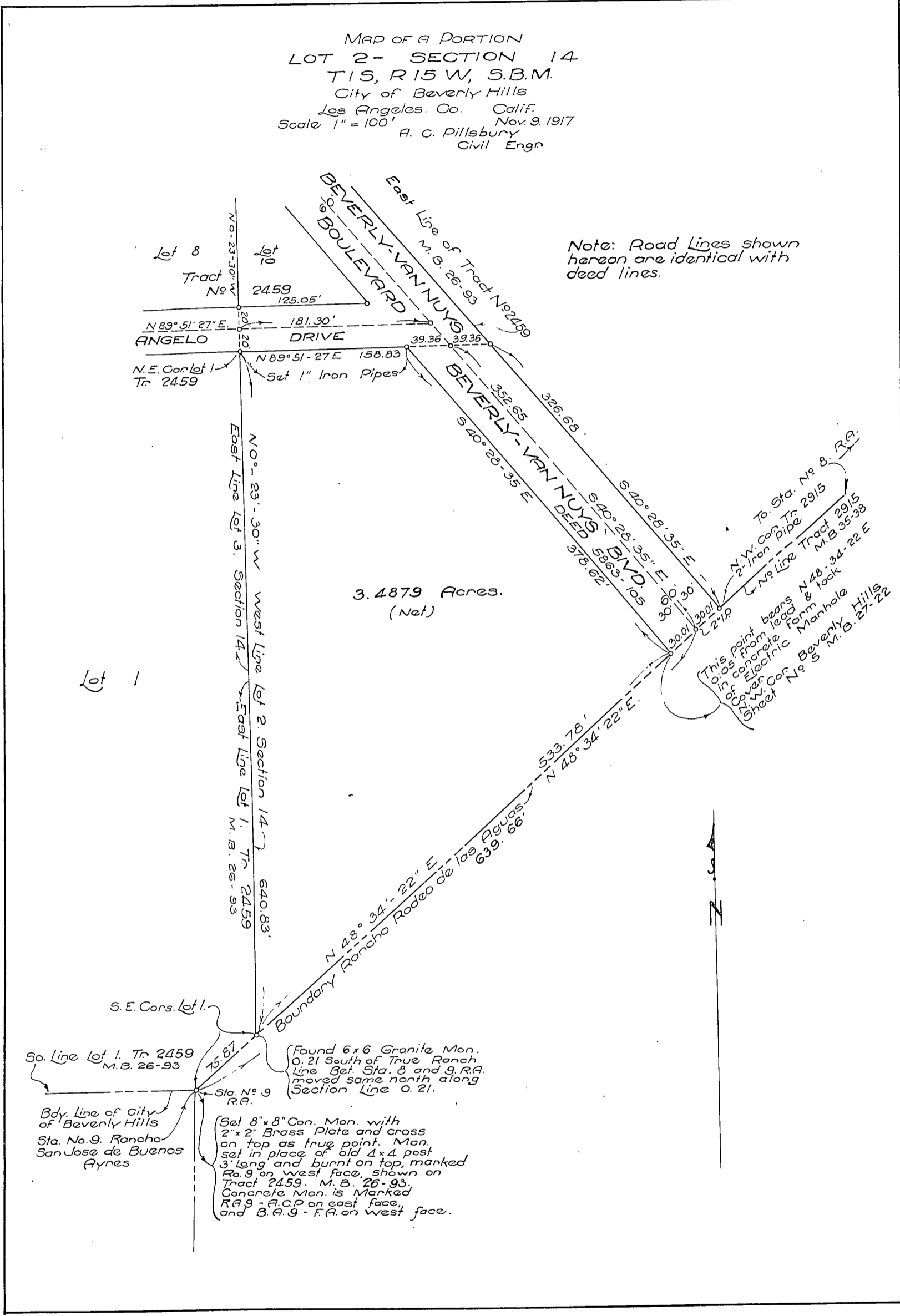


Beverly Hills Corporation
to
H. C. Hollins

MAP OF A PORTION
LOT 2 - SECTION 14
T15, R15 W, S.B.M.
City of Beverly Hills
Los Angeles, Co. Calif.
Scale 1" = 100' Nov. 9, 1917
A. C. Pillsbury
Civil Engr



Recorded Nov. 24, 1917