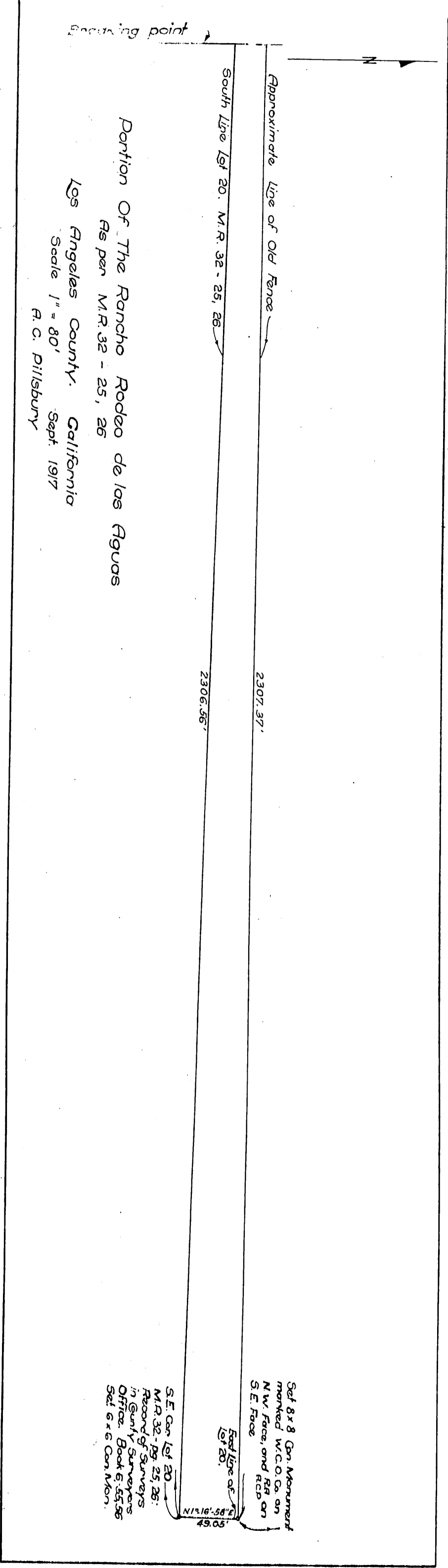
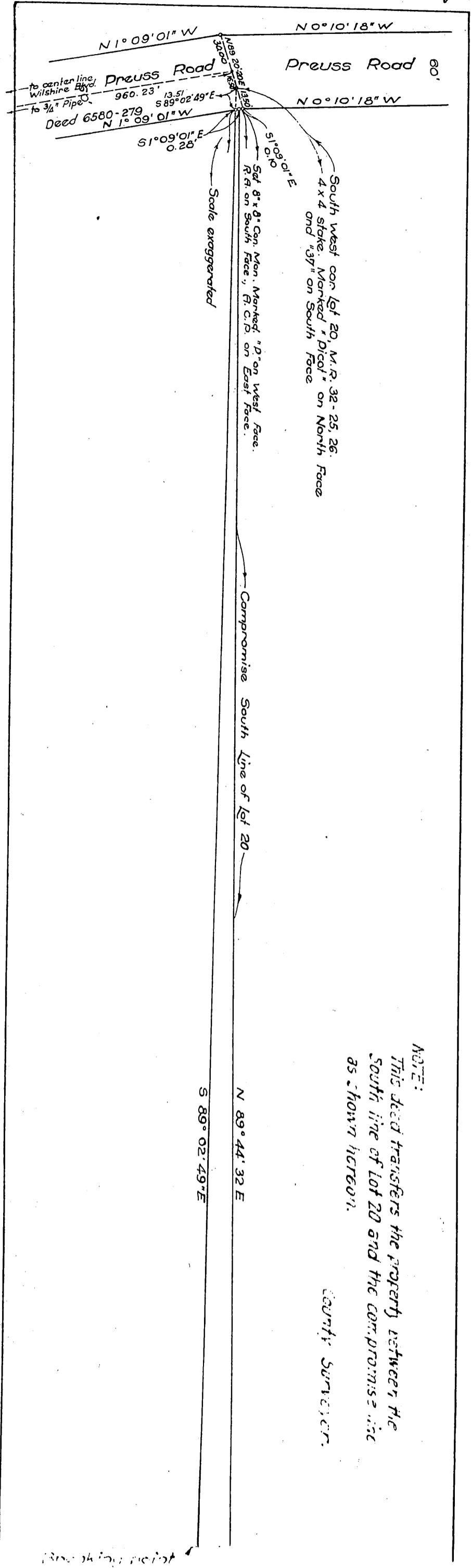


DM 6608-59
47

59

West Coast Oil Co.
to
Rodeo Land & Water Co.



Set 8x8 Con. Monument
marked W.C.O. Co. on
N.W. Face, and R.R. on
S.E. Face

Set 6x6 Con. Mon.
M.R. 32-25, 26:
Record of Surveys
in County Surveyors
Office, Book E, 55, 56

NOTE:
This deed transfers the property between the
South line of Lot 20 and the compromise line
as shown hereon.

County Surveyor.

Recorded Dec. 7, 1917