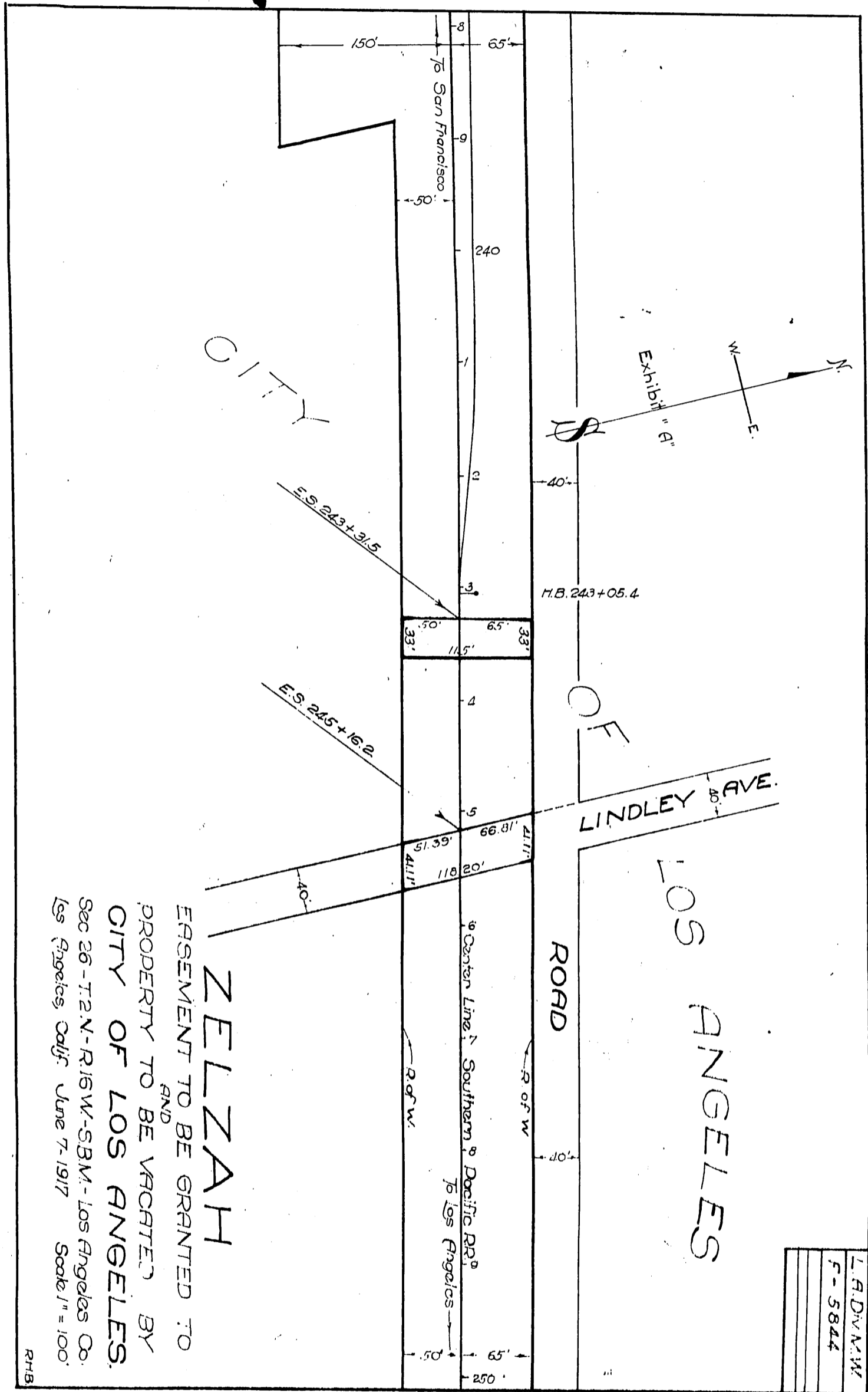


DM 6617-161

161

56

Southern Pacific Railroad Co } to City of Los Angeles
Southern Pacific Co.



EASEMENT TO BE GRANTED TO
 AND
 PROPERTY TO BE VACATED BY
 CITY OF LOS ANGELES.
 Sec 26 - T.2 N. - R.16 W. - S.B.M. - Los Angeles Co.
 Los Angeles, Calif. June 7, 1917 Scale 1" = 100'
 R.H.B.

ZELZAZAH

Recorded Feb. 1, 1918.

D:22-103 A.233
-1st 56

D:6617