

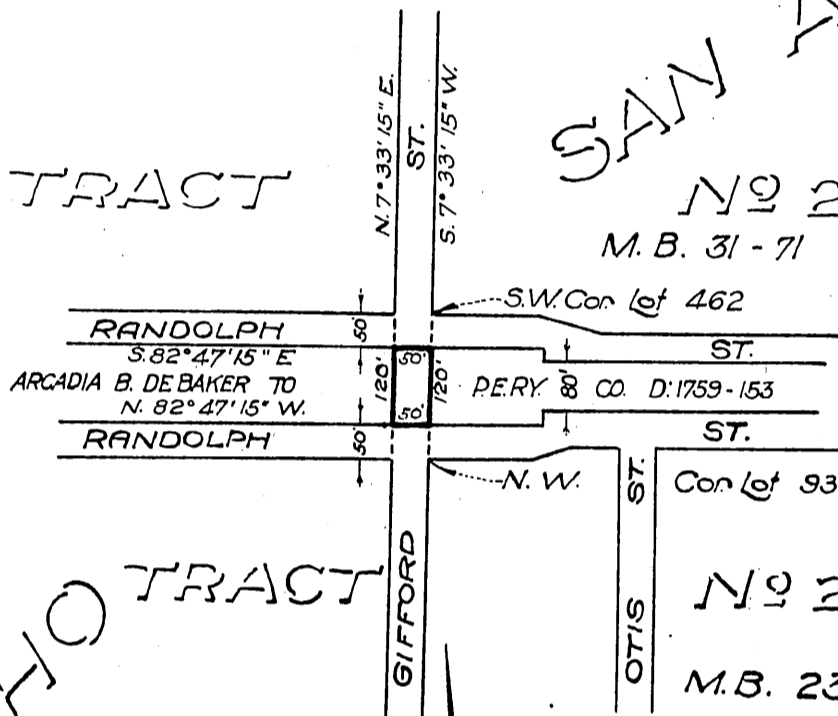
Pacific Electric Railway Co.
to
County of Los Angeles.

SAN ANTONIO
P. 1-389

TRACT

No 2437

M.B. 31-71



RANCHO TRACT

No 2420

M.B. 23-57.

Scale 1"=300' H.F. JUNE 22, 1916.

Easement to L.A. Co.
at Bells, Whittier Line

M.W.K. 259

Recorded Feb. 19, 1918

7-41 A.100