

84

SECTION 2 T.1S.R.14W.

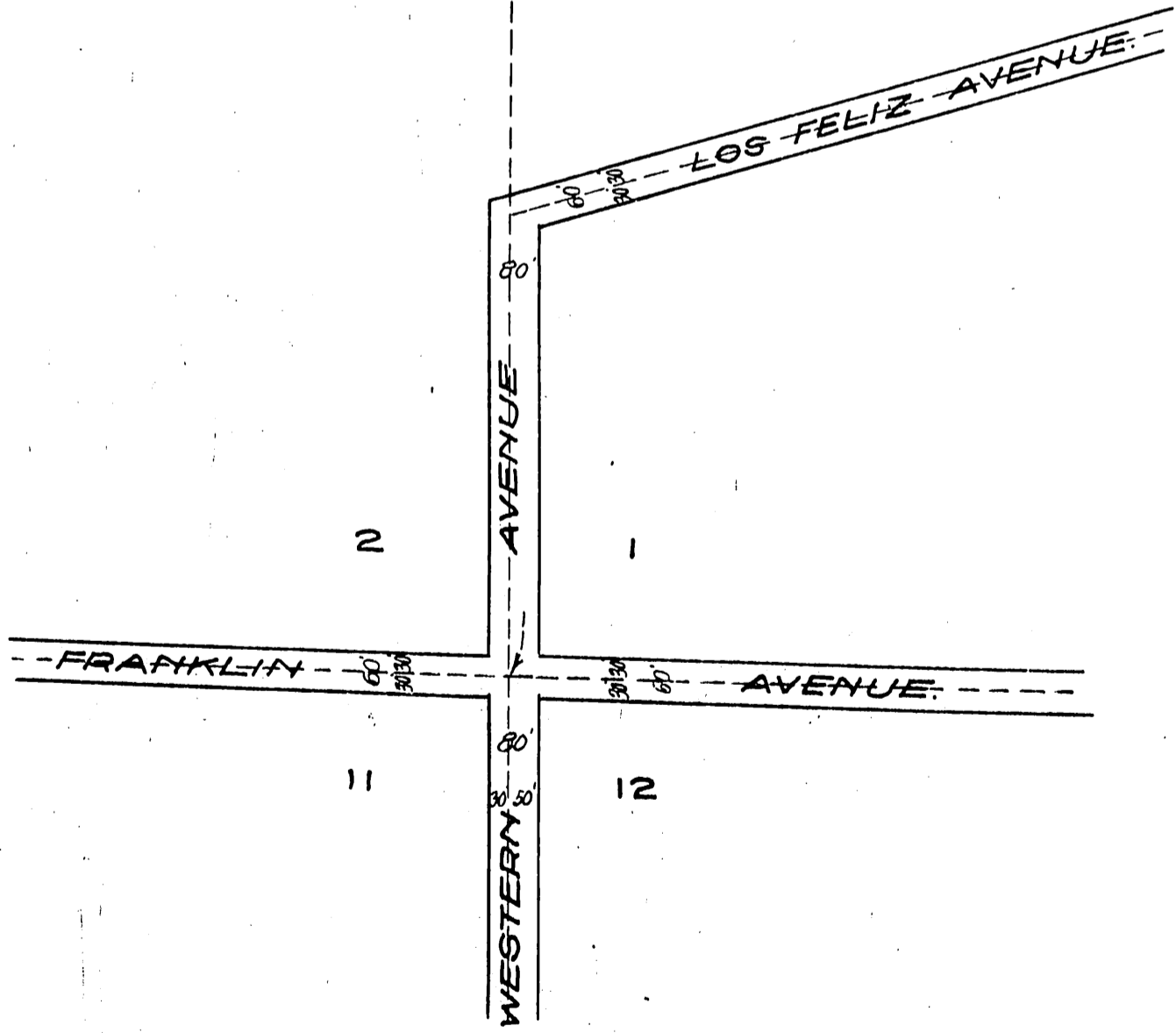
S.B.M.

8 inch Post 4 Feet High Set by
Sawyers and Quinton in 1897
for the Southwesterly corner of Griffith Park

N 0° 40' 10" E

Southeasterly Line of Griffith Park
N. 72° 25' 40" E.

N 0° 05' 40" E 3726.86'



Recorded June 17, 1918.

D.M. 6670-319