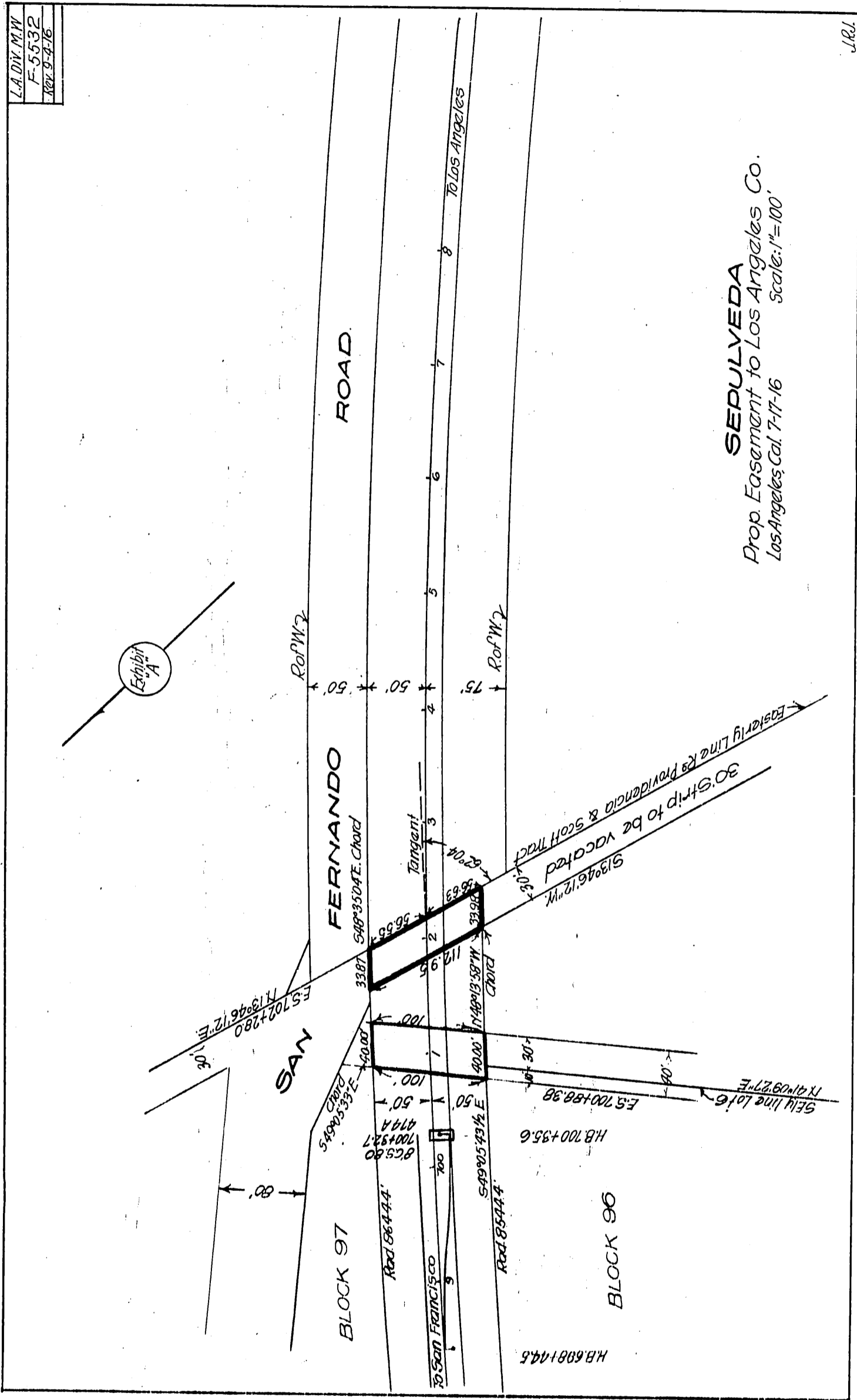


Southern Pacific Railroad Co. } to County of Los Angeles.
Southern Pacific Co. }



SEPULVEDA
Prop. Easement to Los Angeles Co.
Los Angeles, Cal. 7-17-16
Scale: 1" = 100'

C
C

0.27.33
Recorded June 20, 1918.
A-307
See CRM 3377-320