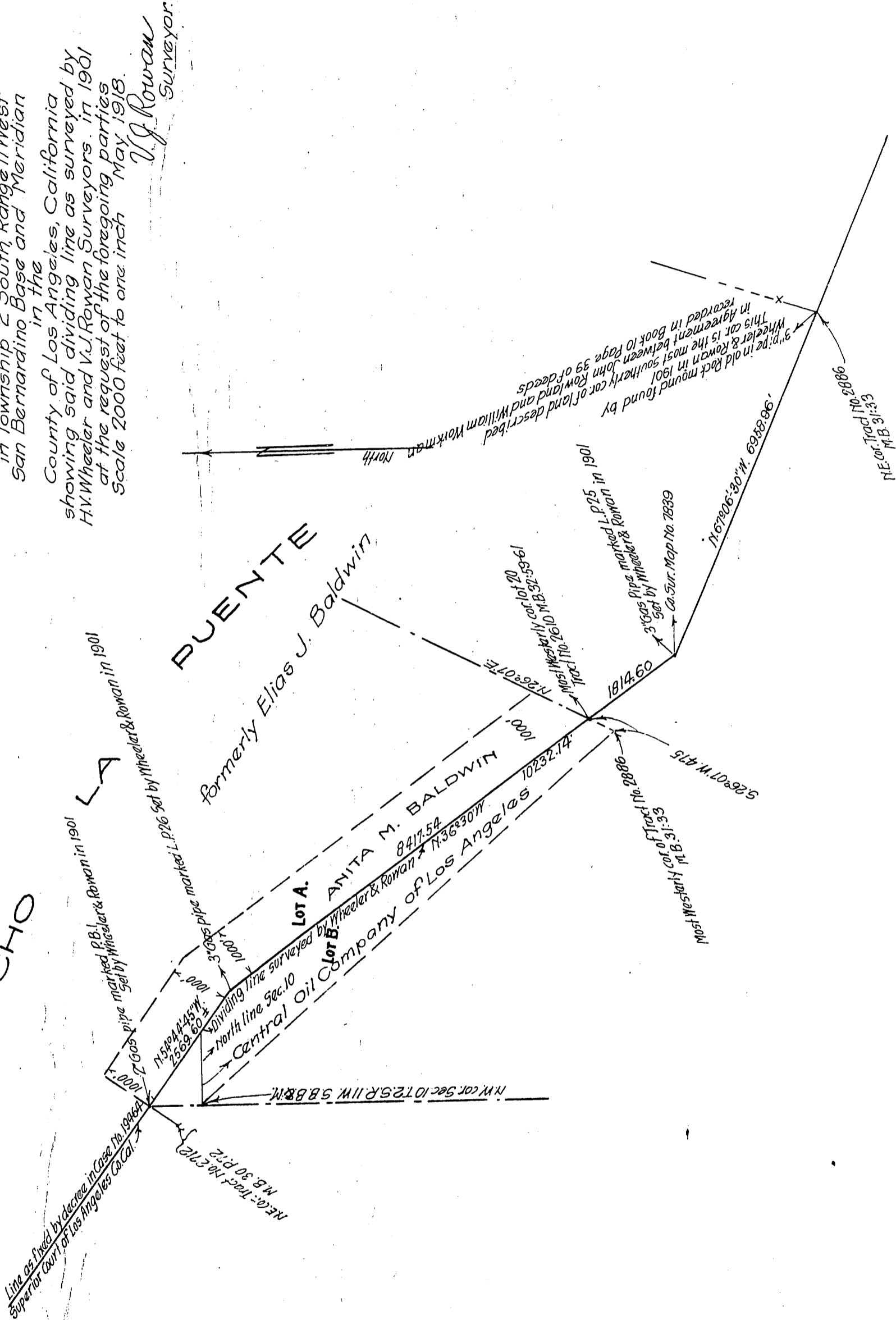


Agreement Between
Central Oil Company of Los Angeles
and
Anita M. Baldwin

Map of the dividing line
between the lands of
Elias J. Baldwin in the Rancho La Puente
and the lands of
the Central Oil Company of Los Angeles
in Township 2 South, Range 11 West
San Bernardino Base and Meridian
in the
County of Los Angeles, California
showing said dividing line as surveyed by
H.V. Wheeler and V.J. Rowan Surveyors in 1901
at the request of the foregoing parties
Scale 2000 feet to one inch
V.J. Rowan
Surveyor.

Exhibit A



Recorded June 25, 1918.

343
A 340