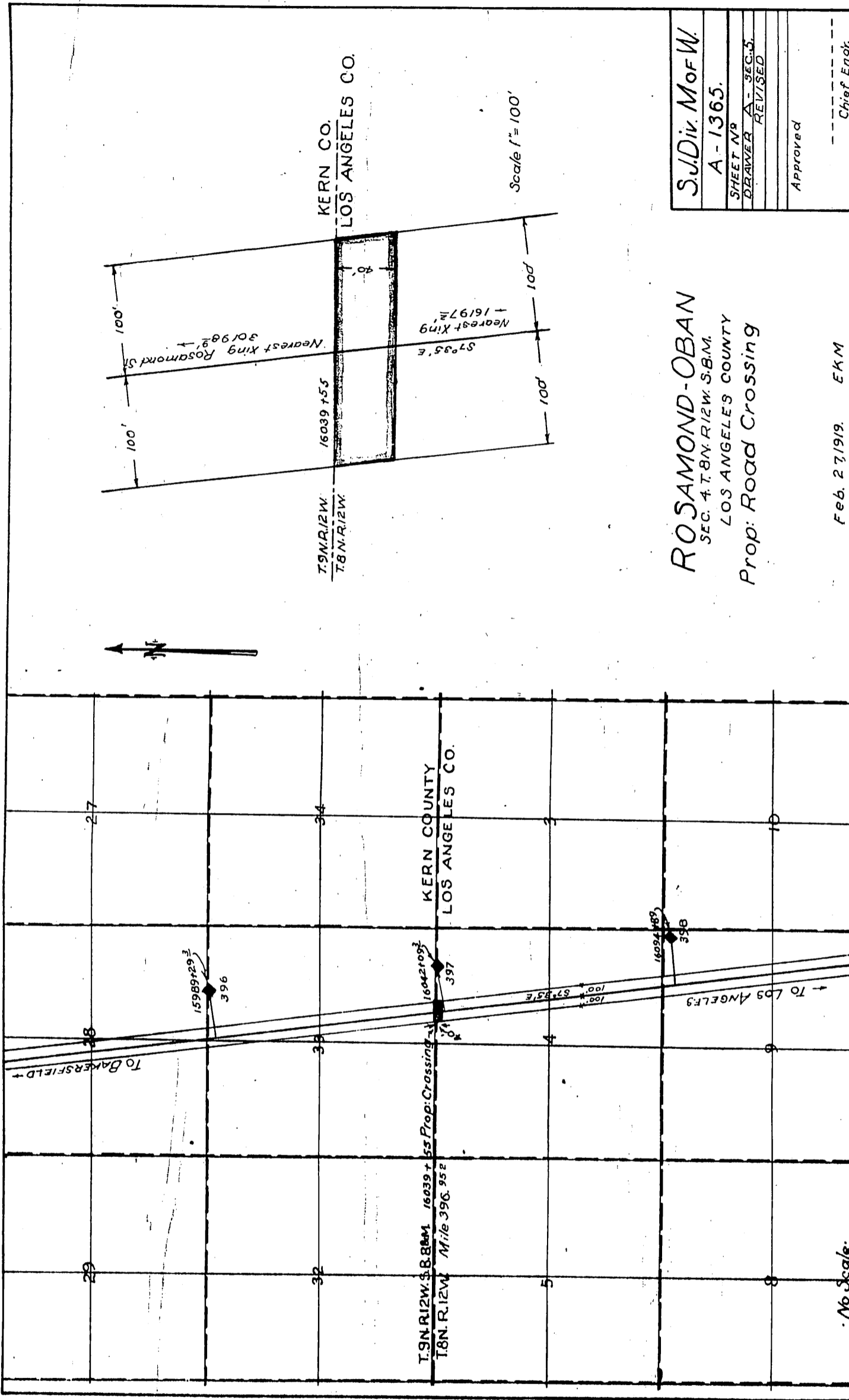


SOUTHERN PACIFIC RAILROAD }
SOUTHERN PACIFIC RAILROAD COMPANY } TO COUNTY OF LOS ANGELES
SOUTHERN PACIFIC COMPANY }



ROSAMOND-OBAN
SEC. 4 T.8N. R.12W. S.8M.
LOS ANGELES COUNTY
Prop: Road Crossing

Feb. 27/1919. EKM

S. J. Div. M of W
A - 1365.
SHEET NO
DRAWN A - SEC. 5.
REVISED
Approved
Chief Eng.

Recorded July 23, 1919.

D. 27-233

Sht. 16.

A. 72

Comp. H.W.S.
S.H.H.