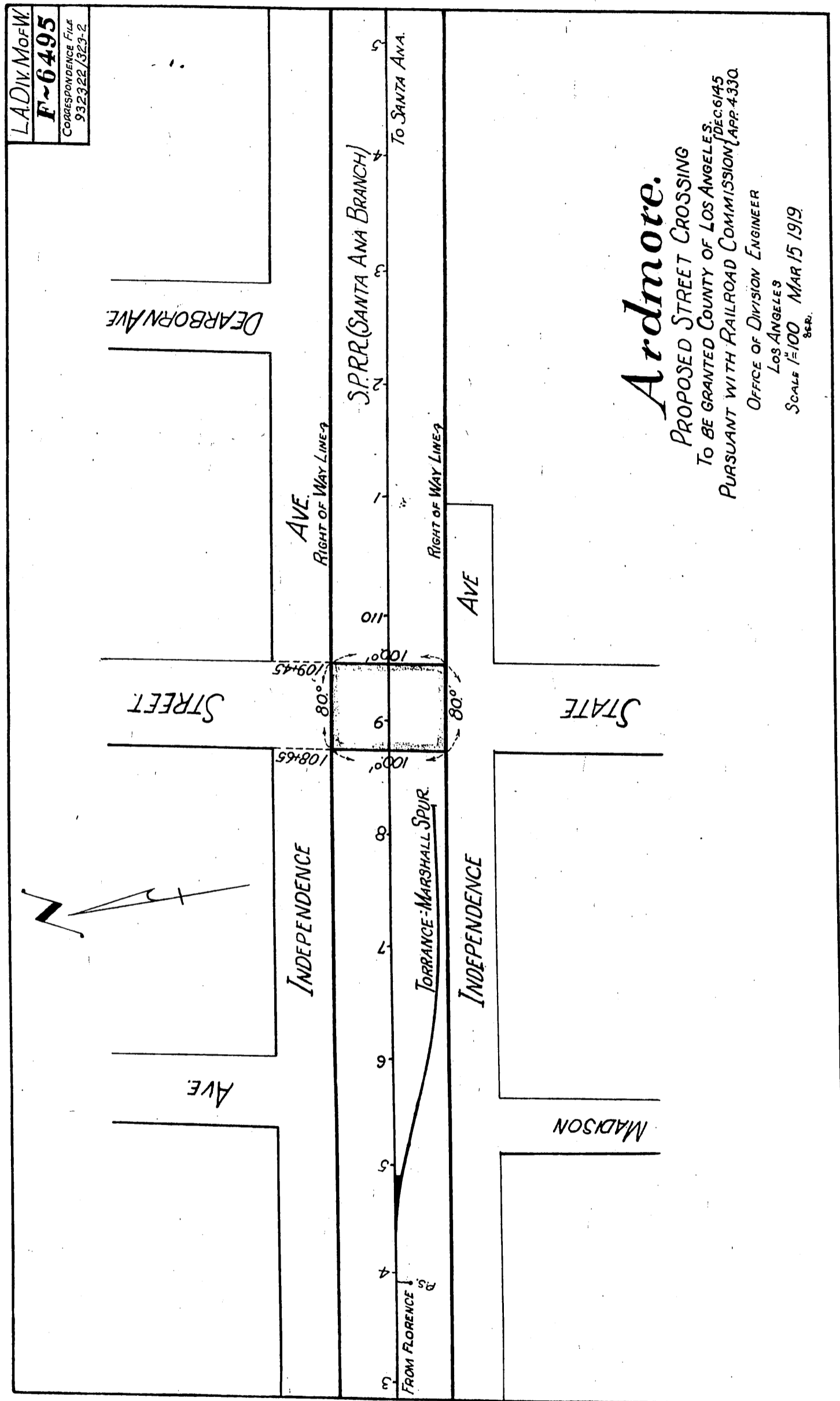


SOUTHERN PACIFIC RAILROAD }  
SOUTHERN PACIFIC RAILROAD COMPANY } TO COUNTY OF LOS ANGELES  
SOUTHERN PACIFIC COMPANY }



**Ardmore.**  
 PROPOSED STREET CROSSING  
 TO BE GRANTED COUNTY OF LOS ANGELES, DEC. 6/145  
 PURSUANT WITH RAILROAD COMMISSION, APP. 4330.  
 OFFICE OF DIVISION ENGINEER  
 LOS ANGELES  
 SCALE 1"=100' MAR 15 1919  
 S.E.P.

Recorded July 23, 1919  
D. 27-214

4355  
Sht 35

Comp. H.W.S.  
S.H.H.