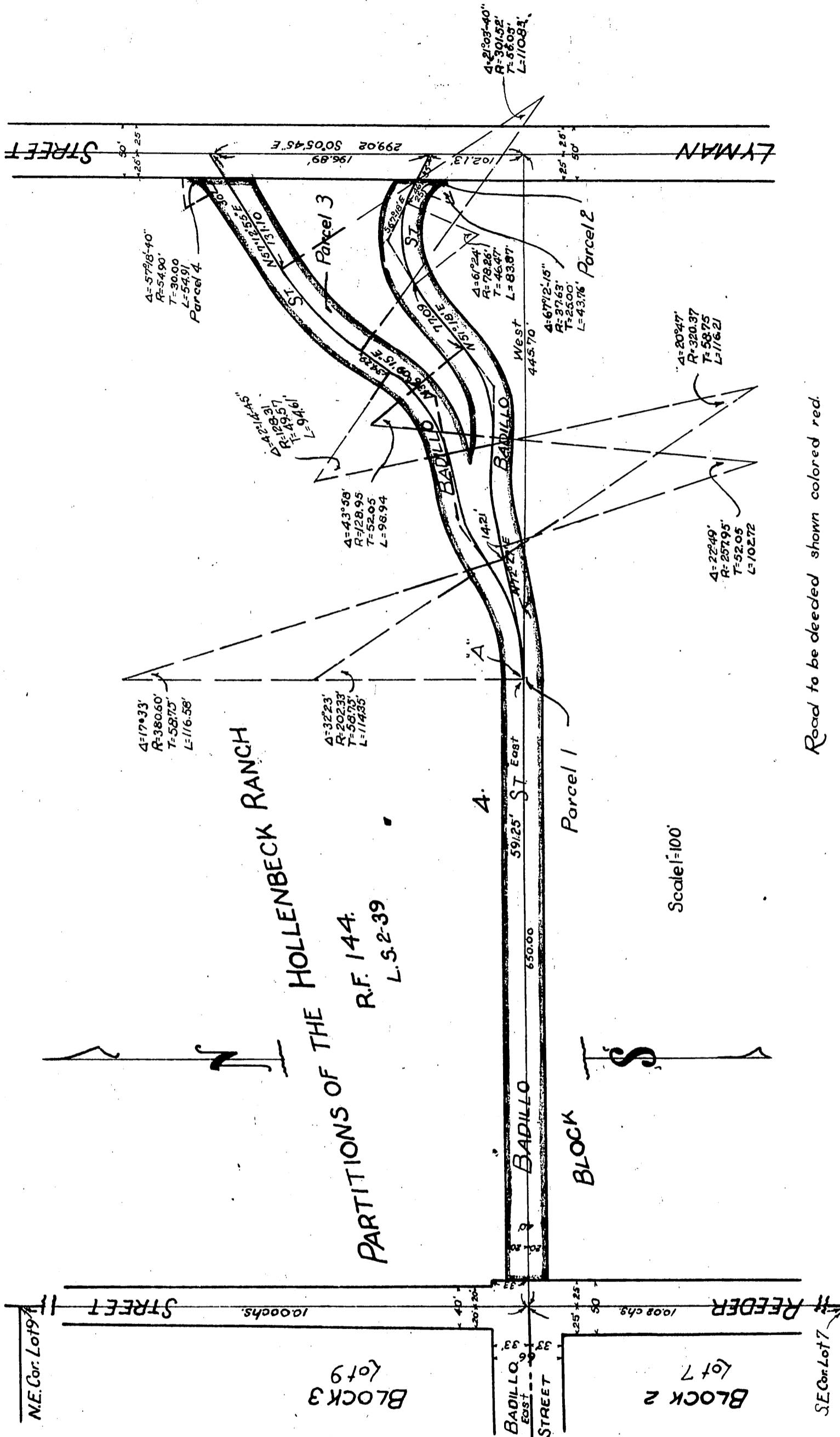


Irwin-Downey Corporation to County of Los Angeles.

31



Road to be deeded shown colored red.

Scale 1"=100'

Recorded Aug. 7, 1919.

D. 27 - 295
D. 27 - 298

A. 342
Sht. 45

Comp. H.W.S.
S.H.H.

Vac. por: Badillo + Lyman Sts - E: 8-211, Min. Bk. 22-273.