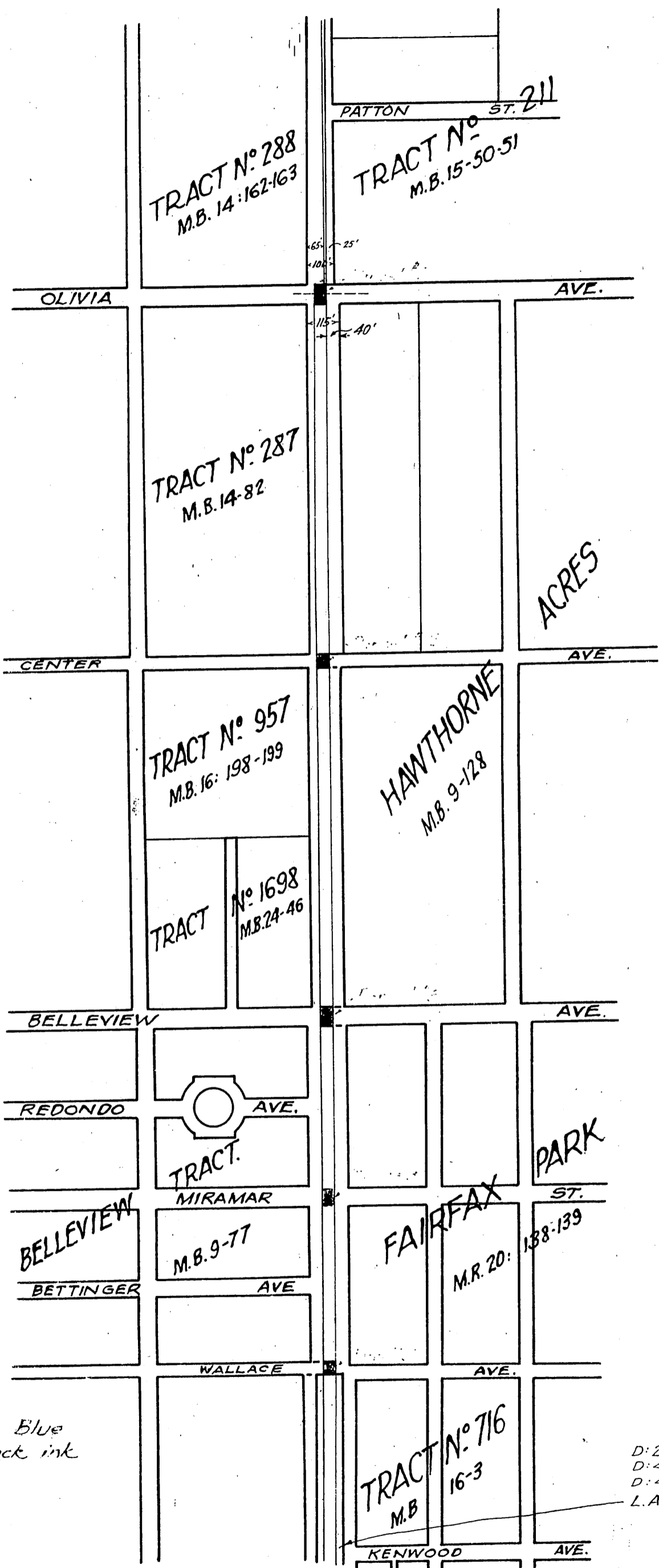


Los Angeles Railway Corporation to County of Los Angeles.



Recorder's Note: Blue ink indicates black ink on original

D: 2634-316
D: 4386-1
D: 4370-79
L.A. Ry. #2 Appr 3-10z

Recorded June 17, 1920

D: 29-68
Sht. 24
Sht. 25
A-98

Comp. L.C.T.
H.J.S.