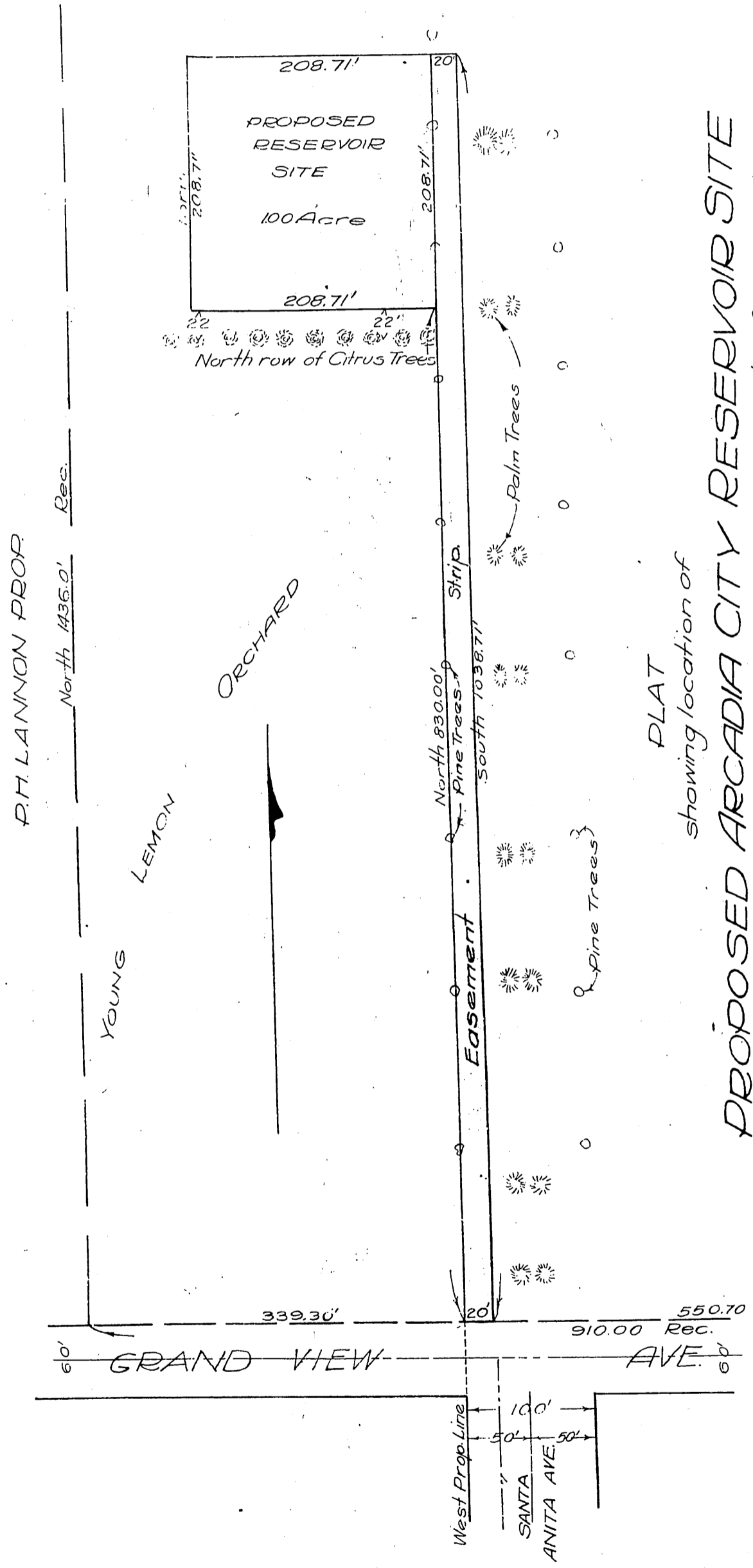


DM 7351-107

Clara Baldwin Stocker 80  
to  
City of Arcadia



PLAT  
showing location of  
**PROPOSED ARCADIA CITY RESERVOIR SITE**  
and Easement Strip on property of  
Clara Baldwin Stocker

May 4, 1920 O.A. Gierlich, City Eng. Scale 1 in = 100 ft.  
Traced by - Engineering Service Co.  
L.A. Calif.

Sit. 75  
D:77-205

Rec. Aug. 19, 1920

Por. deeded by City of Arcadia - E: 41-72, C.R. 190556-138

Comp. H.G. F.W.A.

D:7351