

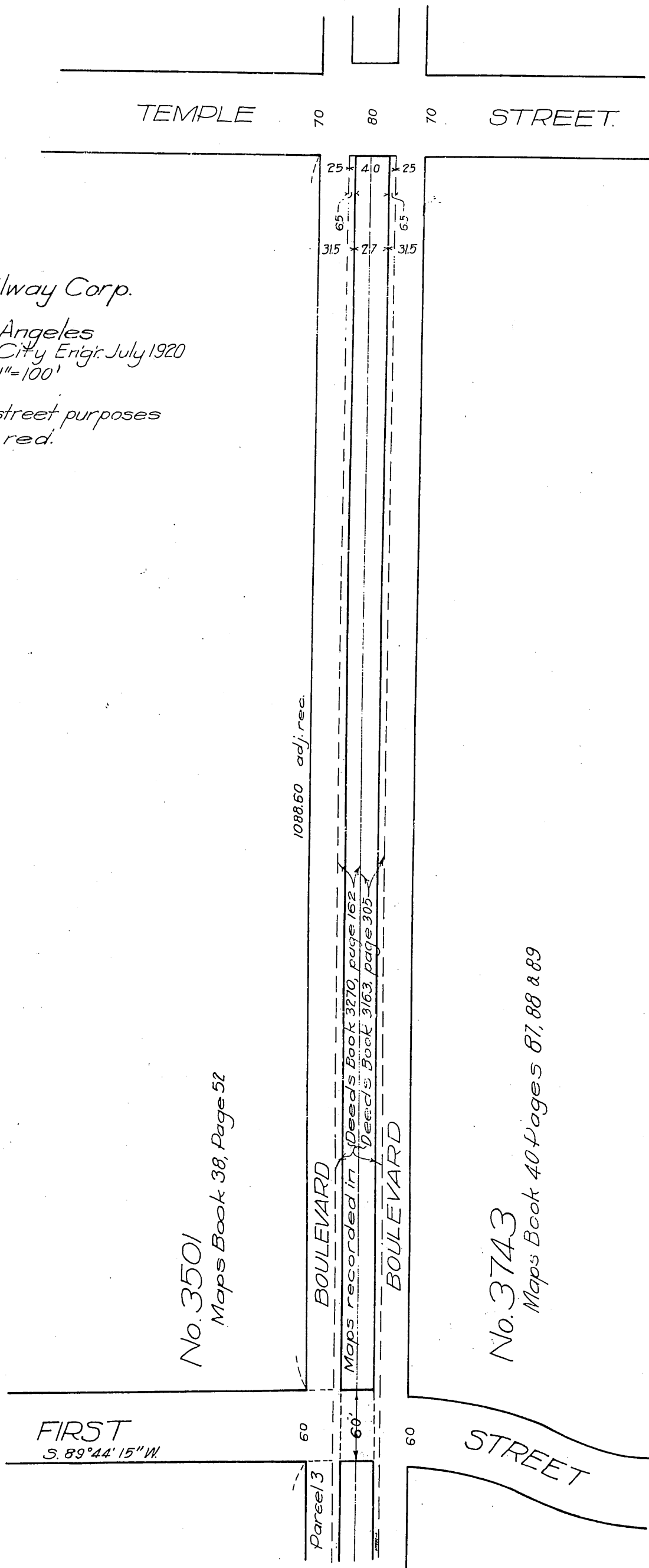
Windsor Square Investment Co.  
&  
Title Insurance & Trust Co.  
to  
City of Los Angeles

84

TEMPLE 70 80 70 STREET.

Los Angeles Railway Corp.  
to  
City of Los Angeles  
John A. Griffin City Engr. July 1920  
Scale 1"=100'

Note: Land conveyed for street purposes  
shown colored red.



No. 3501  
Maps Book 38, Pages 52

1088.60 adj. rec.

BOULEVARD

Maps recorded in Deeds Book 3270, page 162  
Deeds Book 3163, page 305

BOULEVARD

No. 3743  
Maps Book 40 Pages 87, 88 & 89

FIRST  
S. 89° 44' 15\"

60

Parcel 3

60

STREET

Comp. H. G.  
R. V. H.