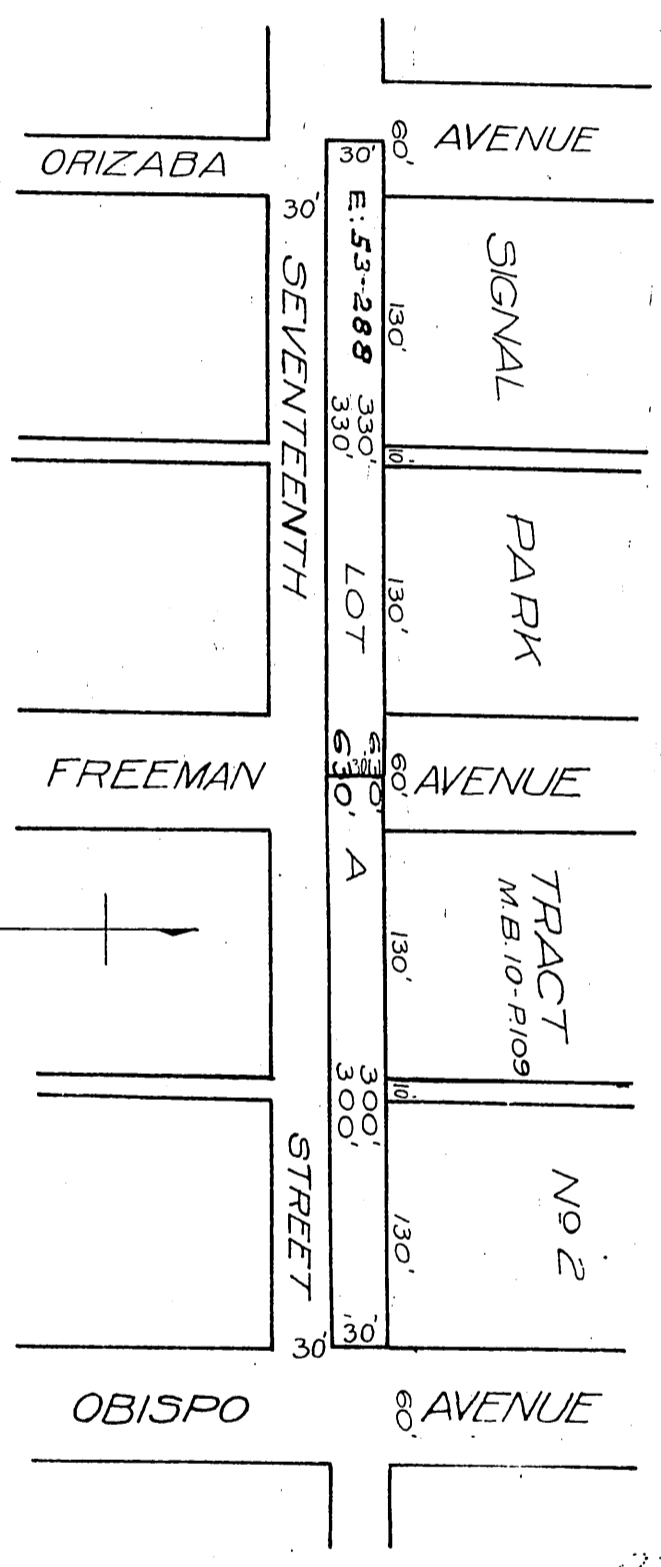


C.A.S. Higley
-to-
City of Long Beach.



Scale 1/4\"/>

SKETCH OF PORTION OF
LOTA
SIGNAL PARK TRACT No 2
DEDDED TO THE CITY OF LONG BEACH
FOR STREET PURPOSES
Red tint shows property deeded

D: 30-779

D: 30-779
Sht. 30

Rec. Nov. 18, 1920

D: 7438