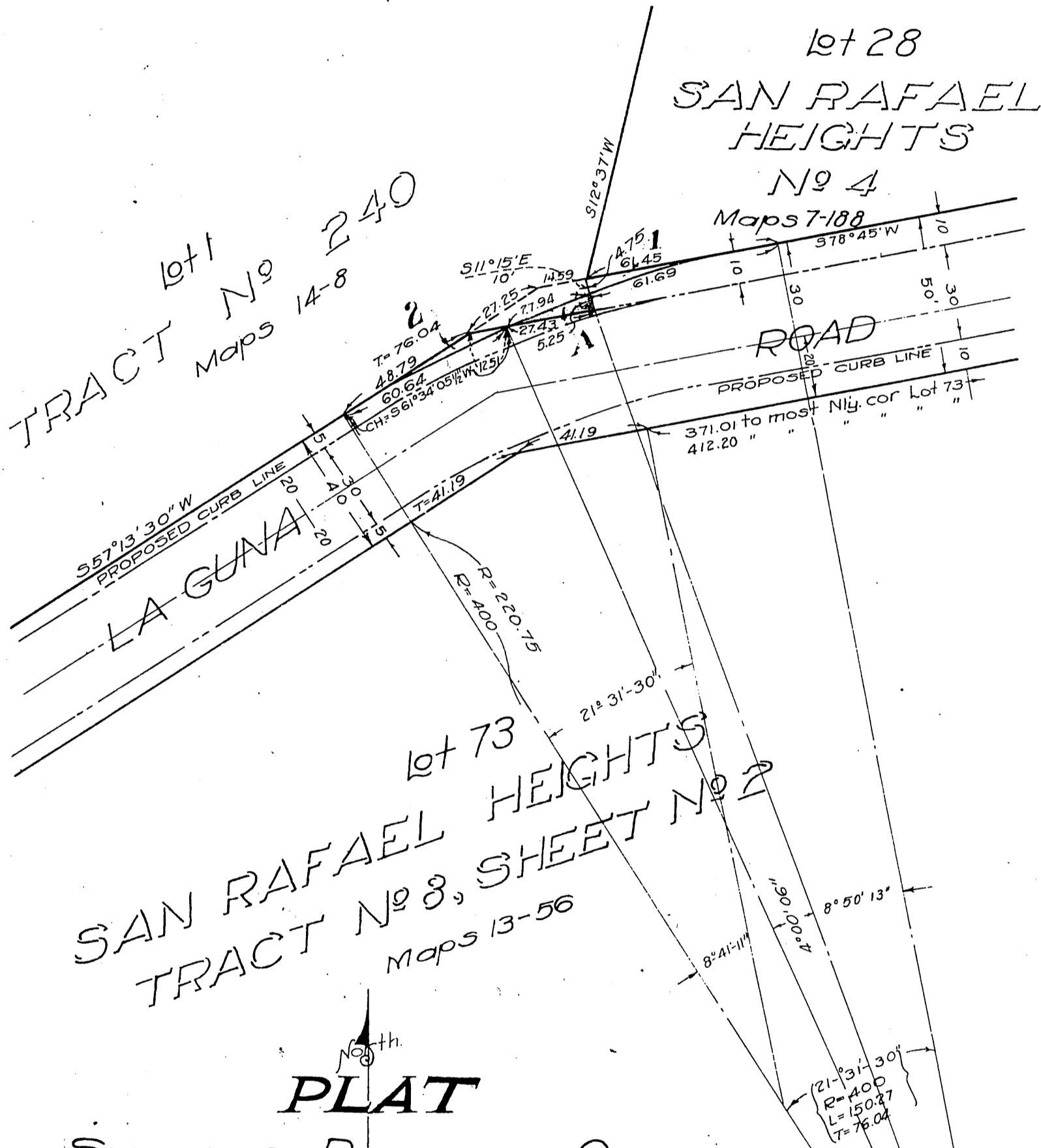


~ Josephine H. and D.L. Humfreville ~  
-to-  
~ City of Pasadena ~



**PLAT**  
 SHOWING PROPOSED CHANGE  
 OF ALIGNMENT OF  
 A PORTION OF  
**LA GUNA RD.**

IN THE CITY OF PASADENA COUNTY OF  
 LOS ANGELES CALIFORNIA.

Pasadena Calif  
 Dec. 1920

Edwin P. Dewey,  
 City Engineer

Scale 1"=40'

D. 30-90  
 See D. 30-99 Ord. No 1882 Vacation