

OFFICE OF THE COUNTY SURVEYOR OF THE COUNTY OF LOS ANGELES

HIGHWAY DEDICATION MAP

LEGEND

COUNTY SURVEYOR'S MAP NO. B-1055
MAP NO.
INDEX MAP NO. 61(A,B,C)
SEARCH MAP NO. VALLEY CIRCLE BLVD. LAKE MANOR DR. 1

FIELD BOOK NO.
FIELD BOOK NO.
PUBLIC TITLE COMPLETE
FEE SUBORDINATED (title incomplete)

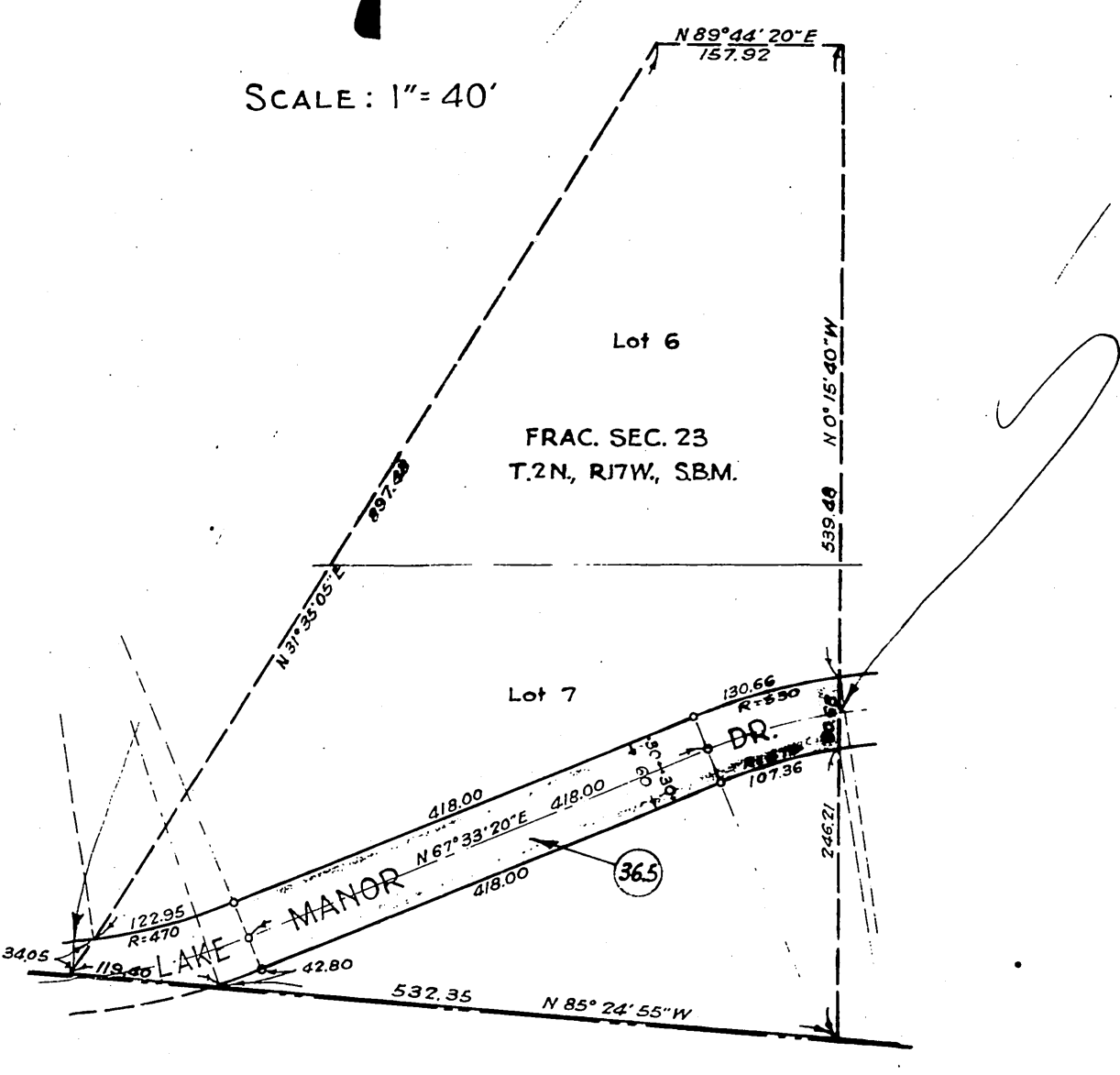
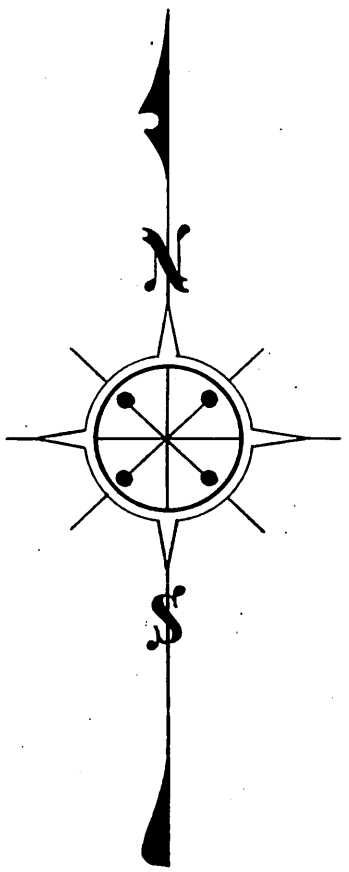
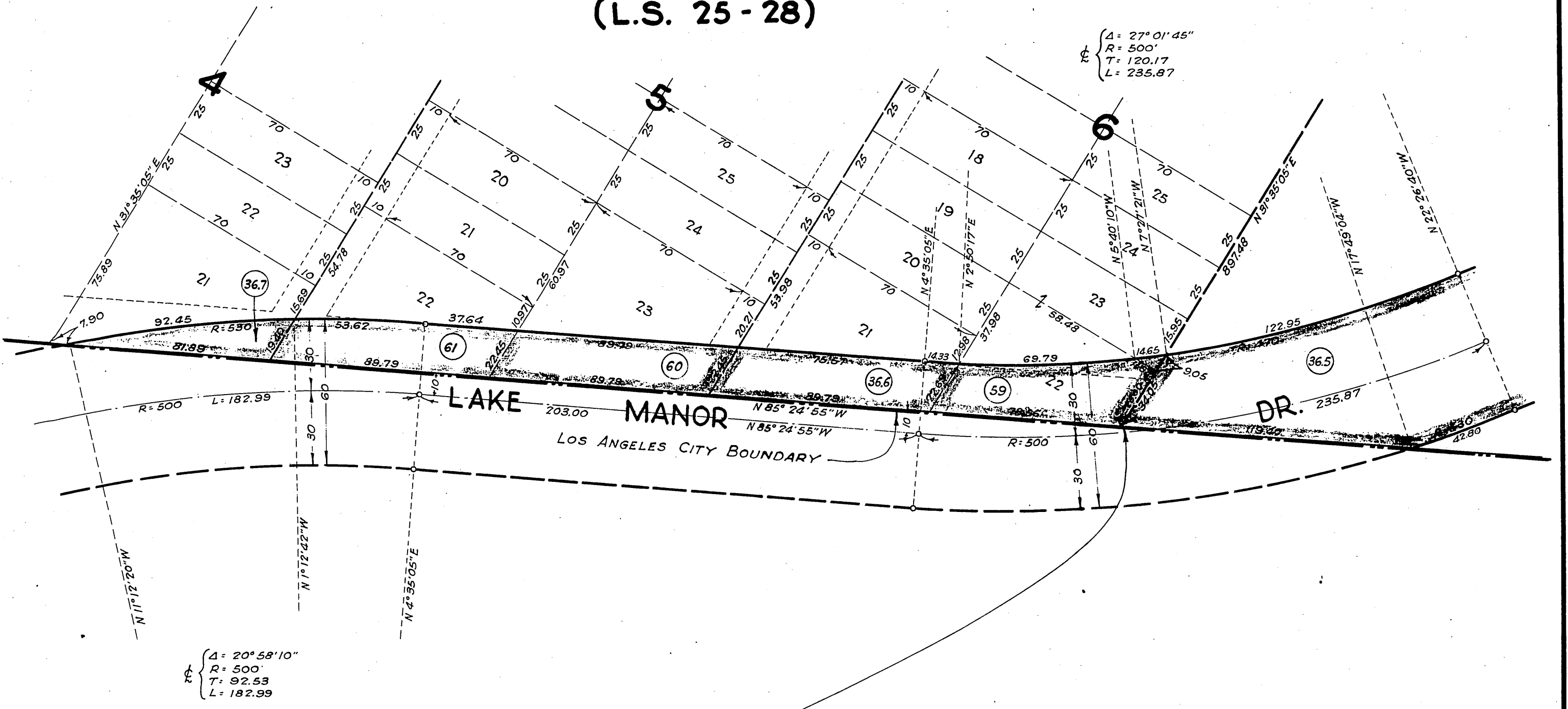
WORDS AND FIGURES SHOWN QUOTED ON MAP ARE AS DESCRIBED IN CONVEYANCE. FIGURES SHOWN IN PARENTHESES ON MAP ARE FROM PREVIOUS RECORDS OR ARE CALCULATED THEREFROM. LAND IN CONVEYANCE SHOWN IN COLORED TINT. DEDICATION STATUS SCALE INDICATES RELATIVE IMPORTANCE OF GRANTEE'S INTERESTS.

Table with columns for DEDICATION STATUS SCALE and POSTING CHECKED, including sub-columns for various legal terms like TAX TITLE, PARTICULAR ESTATES, TRUST DEEDS, etc.

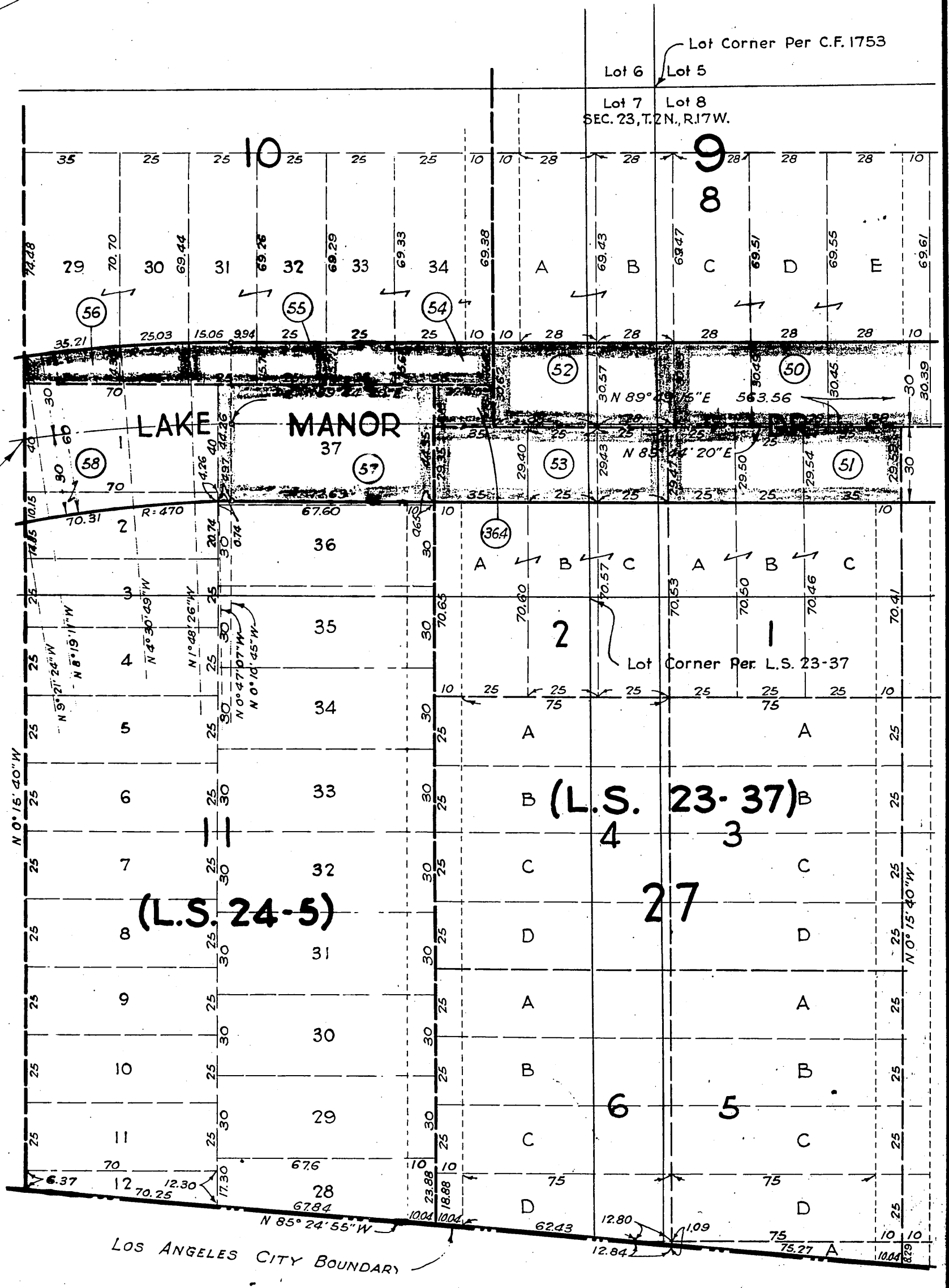
Main table with columns: LINE NO., PARCEL NO., OFFICIAL RECORDS, DATE RECORDED, 'E' BOOK, PAGE, DATE OF CONVEYANCE, NATURE OF CONVEYANCE, PURPOSE, NAME, GRANTEE, GRANTORS. Contains 61 rows of data.

OFFICE OF THE
 COUNTY SURVEYOR
 OF THE COUNTY OF LOS ANGELES
 HIGHWAY DEDICATION MAP

(L.S. 25 - 28)



SCALE: 1" = 150'

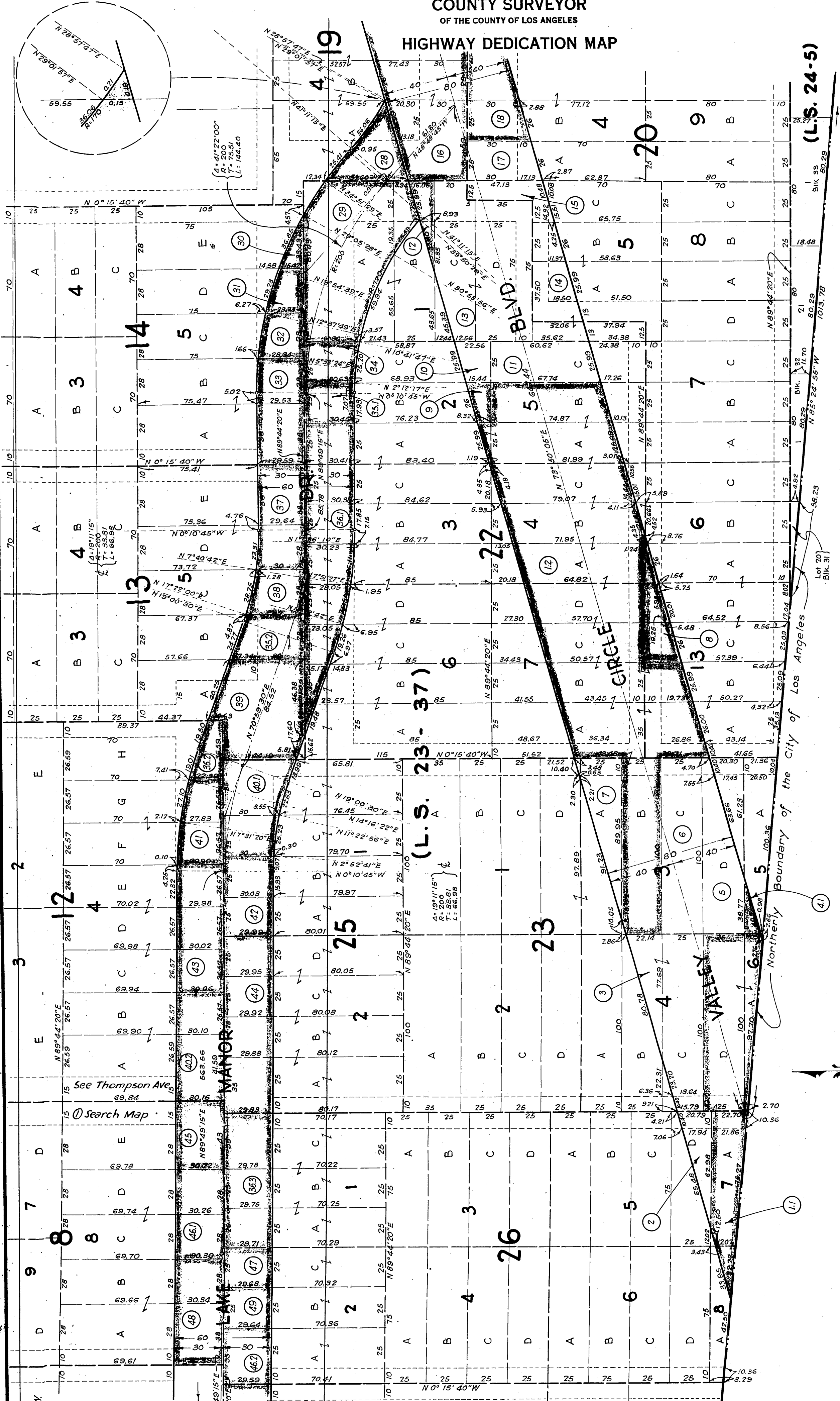


(L.S. 24-5)

COMPILED BY	C.H. Hughes	Aug. 1936	C. S. INDEX MAP NO. 61(A.B.5)
CALCULATED BY	"	"	ASSESSOR'S BOOK NO. 323
DRAWN BY	"	Nov. 1936	H: 16
TRACED BY	"	Dec. 1936	
CHECKED BY	R. G. Lunt	Dec. 1936	

OFFICE OF THE
COUNTY SURVEYOR
OF THE COUNTY OF LOS ANGELES

HIGHWAY DEDICATION MAP



(L.S. 24-5)

(L.S. 23-37)

Lot 5
Lot 8
SEC. 23, T2N, R17W
(Per C.F. 1753)

Lot 5
Lot 8
SEC. 23, T2N, R17W
(Per L.S. 23-37)

COMPILED BY	C. H. Hughes	Aug. 1936	C. S. INDEX MAP NO.
CALCULATED BY	"	"	ASSESSOR'S BOOK NO.
DRAWN BY	"	Nov. 1936	
TRACED BY	"	"	
CHECKED BY	R. G. Lunt	Dec. 1936	

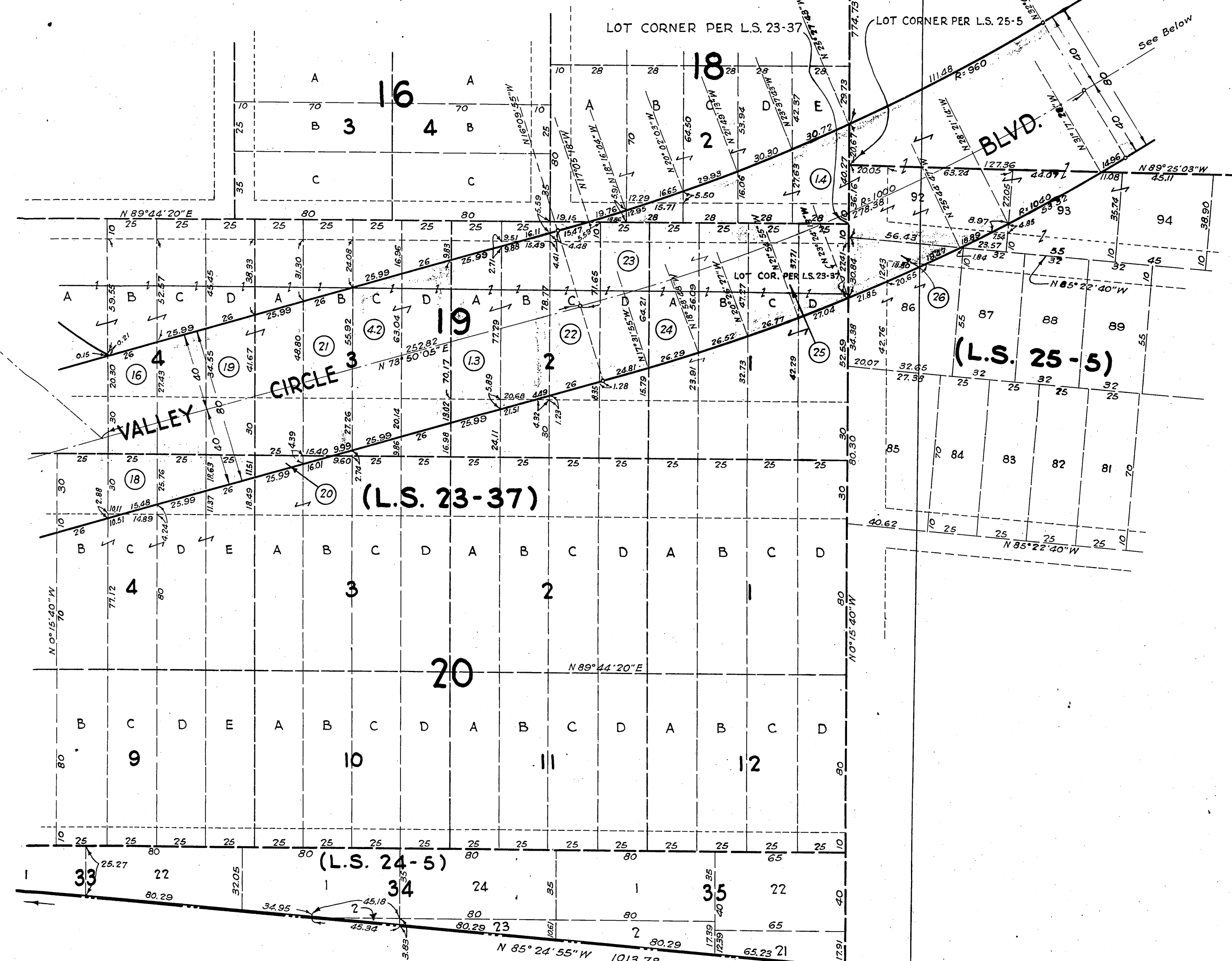
H: 16

H 16-3

OFFICE OF THE
COUNTY SURVEYOR
OF THE COUNTY OF LOS ANGELES
HIGHWAY DEDICATION MAP

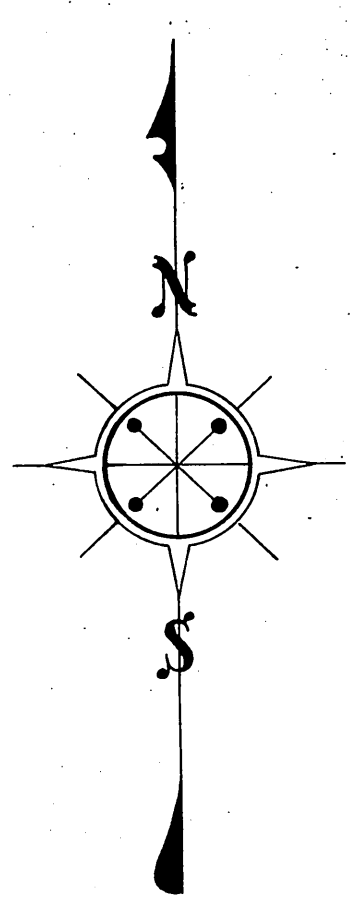
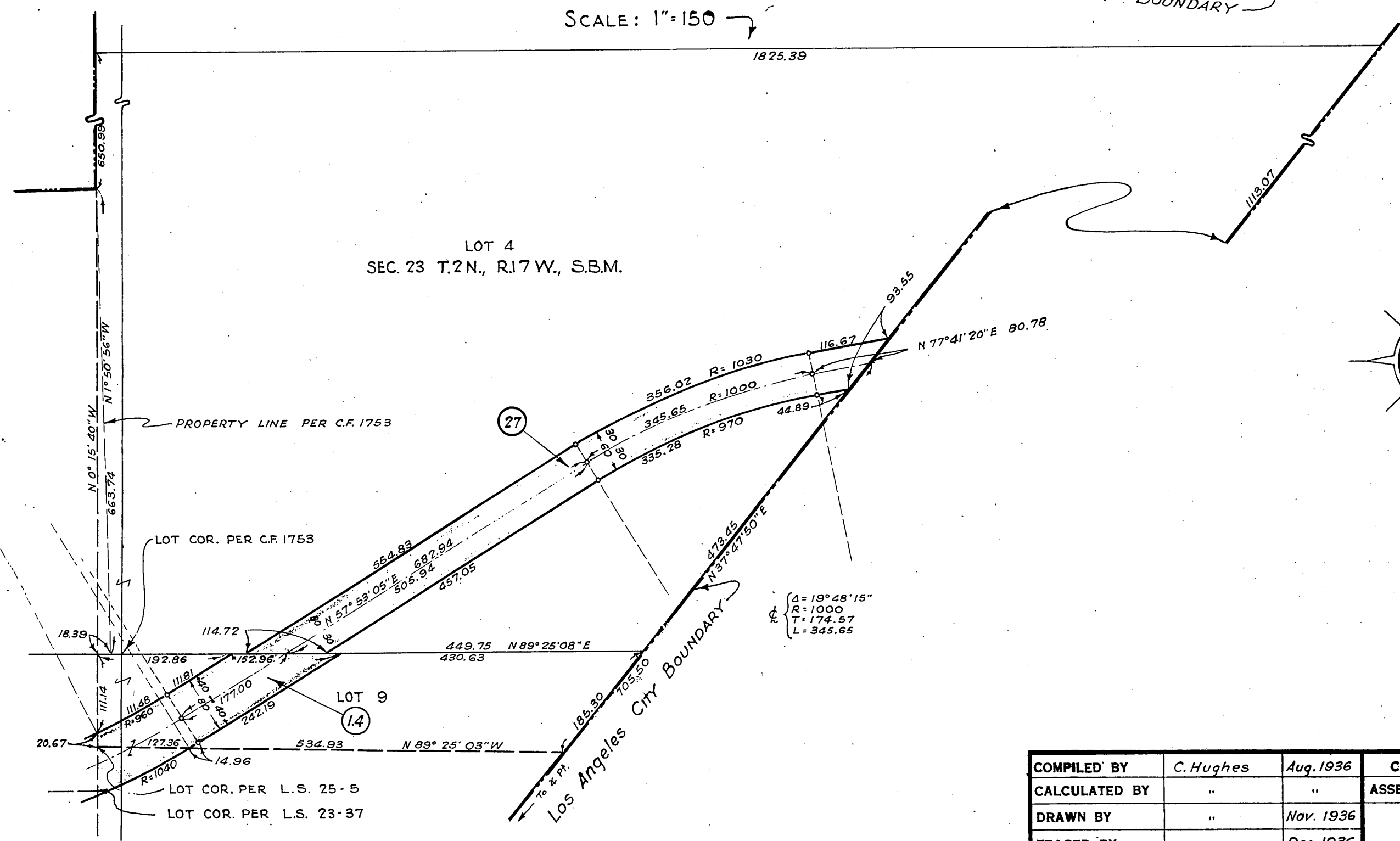
LOT 5 LOT 4
LOT 8 LOT 9
SEC. 23, T.2N, R.17W, S.B.M.

$\Delta = 15^\circ 57' 00''$
 $R = 1000$
 $T = 140.10$
 $L = 278.38$



SCALE: 1" = 40'
SCALE: 1" = 150'

LOS ANGELES CITY BOUNDARY



COMPILED BY	C. Hughes	Aug. 1936	C. S. INDEX MAP NO. 61 (AB 6)
CALCULATED BY	"	"	ASSESSOR'S BOOK NO. 323
DRAWN BY	"	Nov. 1936	H: 16
TRACED BY	"	Dec. 1936	
CHECKED BY	R. G. Lunt	Dec. 1936	

FILED: JANUARY 19, 1937.