

3

OFFICE OF THE COUNTY SURVEYOR OF THE COUNTY OF LOS ANGELES HIGHWAY DEDICATION MAP

LEGEND

COUNTY SURVEYOR'S MAP NO. 7714-1 6655 ROAD DEPT. R/W MAP NO. INDEX MAP NO. 41(D.2) 50(A.2) SEARCH MAP NO. L.A. CANADA VERDUGO RD. PEDESTRIAN TUNNEL

FIELD BOOK NO. FIELD BOOK NO.

PUBLIC TITLE COMPLETE FEE SUBORDINATED (Title Incomplete) HIGHWAY VACATIONS INCIDENTAL EASEMENTS

WORDS AND FIGURES SHOWN QUOTED ON MAP ARE AS DESCRIBED IN THE CONVEYANCE. FIGURES SHOWN IN PARENTHESES ON MAP ARE TAKEN FROM PREVIOUS RECORDS OR ARE CALCULATED THEREFROM. LAND INCLUDED IN CONVEYANCE SHOWN IN COLORED TINT. DEDICATION STATUS SCALE INDICATES RELATIVE IMPORTANCE OF GRANTEE'S INTERESTS IN EACH PARCEL.

POSTING CHECKED table with columns: H. D. MAP BOOK, SEARCH MAP, TRACTS, C.S.M., ASSESSOR'S BOOK, C. S. INDEX MAP. Includes sub-columns for DATE, BY, and various status indicators.

Main table with columns: LINE NO., PARCEL NO., OFFICIAL RECORDS (CERTIFICATE NO., DOC. NO., PAGE), DATE RECORDED, 'D' BOOK, DATE OF CONVEYANCE, NATURE OF CONVEYANCE, PURPOSE, NAME, CONSIDERATION, CONDITIONS, GRANTEE, GRANTORS, DEDICATION STATUS SCALE (1-10).



OFFICE OF THE  
COUNTY SURVEYOR  
OF THE COUNTY OF LOS ANGELES  
HIGHWAY DEDICATION MAP

SEE H: 30-4

SEE H: 30-6

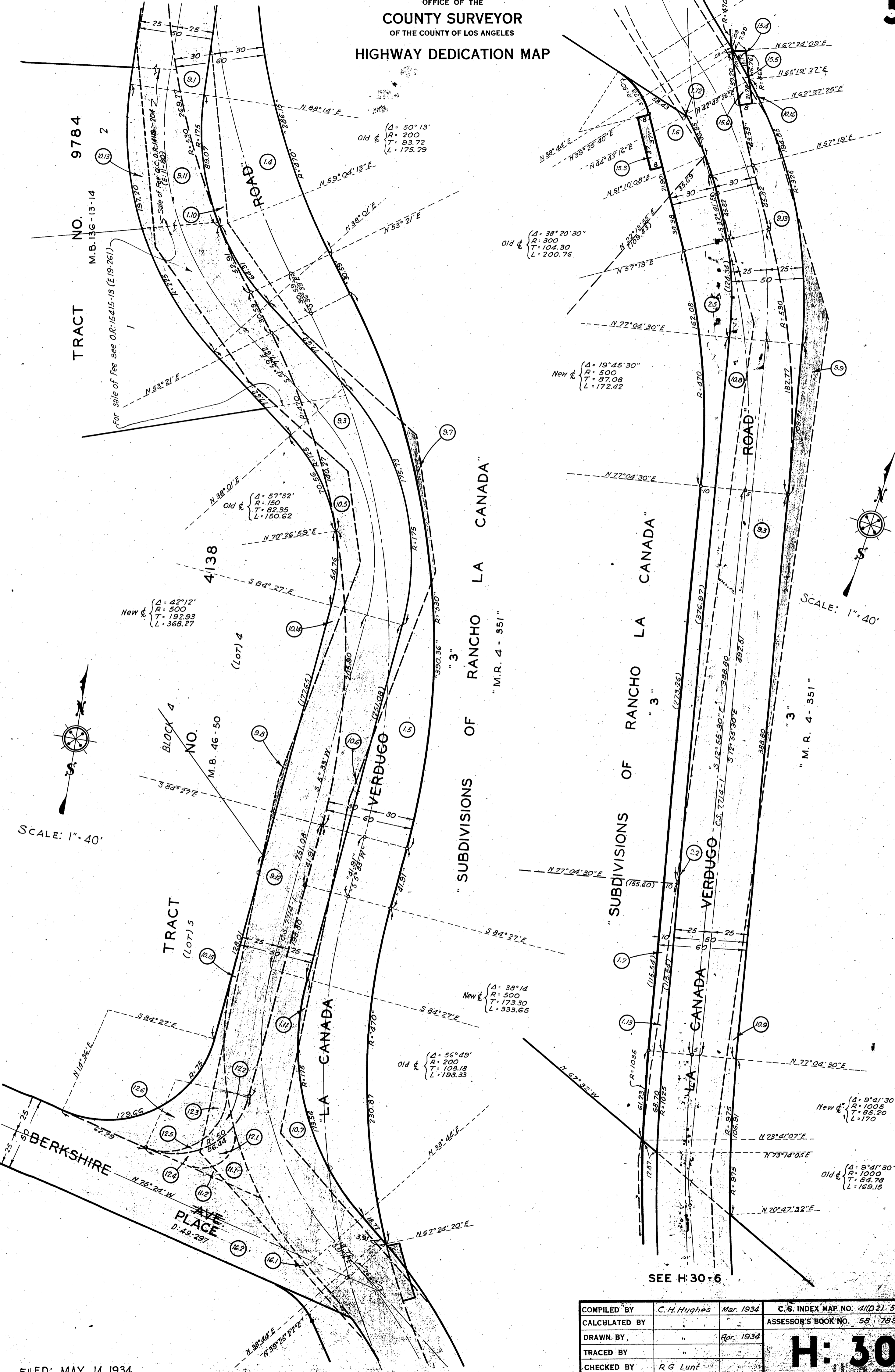
TRACT NO. 9784  
M.B. 136-13-14  
For sale of fee see O.R. 15415-13 (E 19-261)

TRACT (LOT) 5  
M.B. 46-50

TRACT (LOT) 4  
M.B. 46-50

TRACT (LOT) 3  
M.B. 4-351

TRACT (LOT) 2  
M.B. 136-13-14



SCALE: 1" = 40'

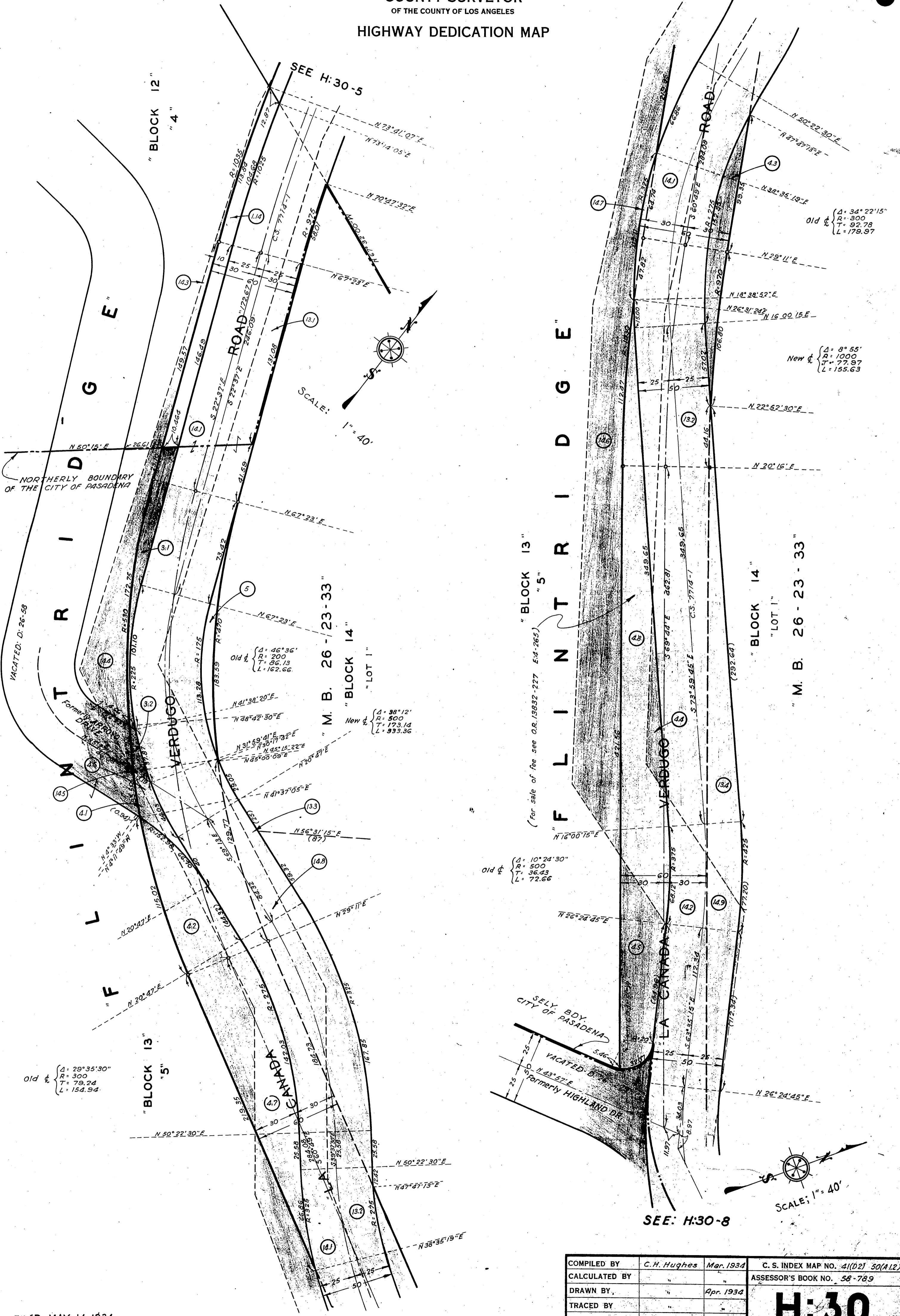
SCALE: 1" = 40'

FILED: MAY 14, 1934.

COMPILED BY	C. H. Hughes	Mar. 1934	C. S. INDEX MAP NO. 41(D2) 5000(12)
CALCULATED BY	"	"	ASSESSOR'S BOOK NO. 58-789
DRAWN BY	"	Apr. 1934	
TRACED BY	"	"	
CHECKED BY	R. G. Lunt		

**H: 30**

OFFICE OF THE  
 COUNTY SURVEYOR  
 OF THE COUNTY OF LOS ANGELES  
 HIGHWAY DEDICATION MAP



FILED MAY 14, 1934

COMPILED BY	C. H. Hughes	Mar. 1934	C. S. INDEX MAP NO. 41(D2) 50(A12)
CALCULATED BY	"	"	ASSESSOR'S BOOK NO. 56-783
DRAWN BY	"	Apr. 1934	
TRACED BY	"	"	
CHECKED BY	R. G. Lunt	"	

**H:30**

H 30-6