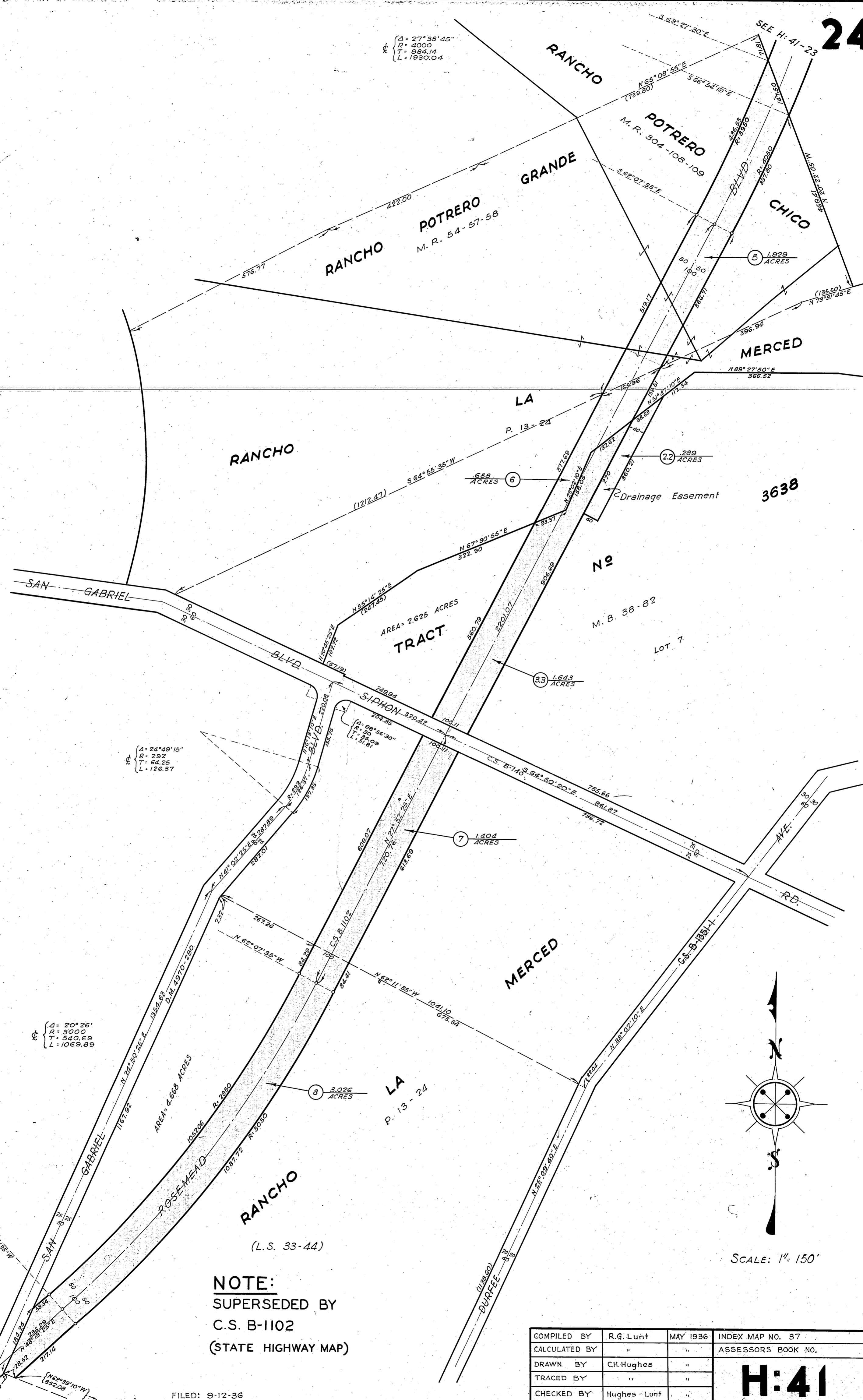
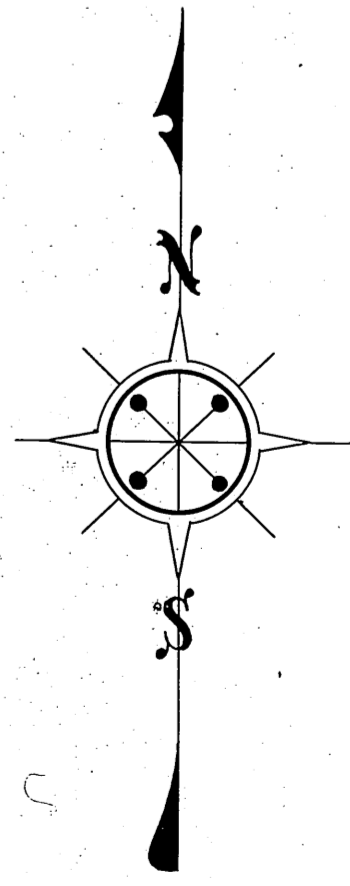


$\Delta = 27^{\circ}38'45''$
 $R = 4000$
 $T = 984.14$
 $L = 1930.04$



$\Delta = 24^{\circ}49'15''$
 $R = 292$
 $T = 64.25$
 $L = 126.37$

$\Delta = 20^{\circ}26'$
 $R = 3000$
 $T = 540.69$
 $L = 1069.89$



SCALE: 1" = 150'

NOTE:
SUPERSEDED BY
C.S. B-1102
(STATE HIGHWAY MAP)

FILED: 9-12-36

COMPILED BY	R.G. Lunt	MAY 1936	INDEX MAP NO. 37
CALCULATED BY	"	"	ASSESSORS BOOK NO.
DRAWN BY	C.H. Hughes	"	H:41
TRACED BY	"	"	
CHECKED BY	Hughes - Lunt	"	