

OFFICE OF THE COUNTY SURVEYOR OF THE COUNTY OF LOS ANGELES

HIGHWAY DEDICATION MAP

LEGEND

COUNTY SURVEYOR'S MAP NO. 8951 FIELD BOOK NO. 72 ROAD DEPT. MAP NO. S-3685 FIELD BOOK NO. F.C. 487 INDEX MAP NO. 36, (E 34) and 37, (A4) SEARCH MAP NO. BEVERLY BOULEVARD POWERS AVENUE

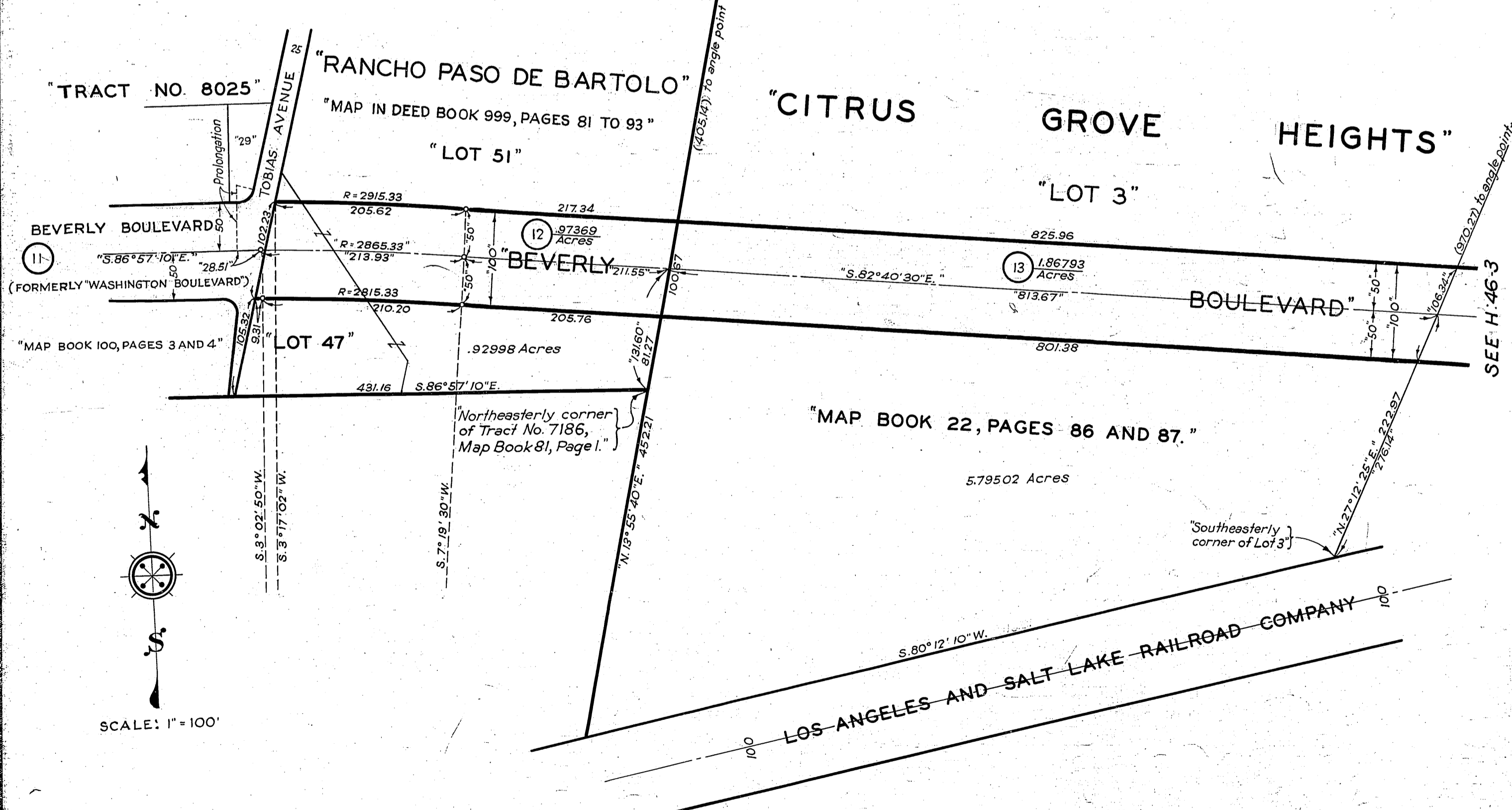
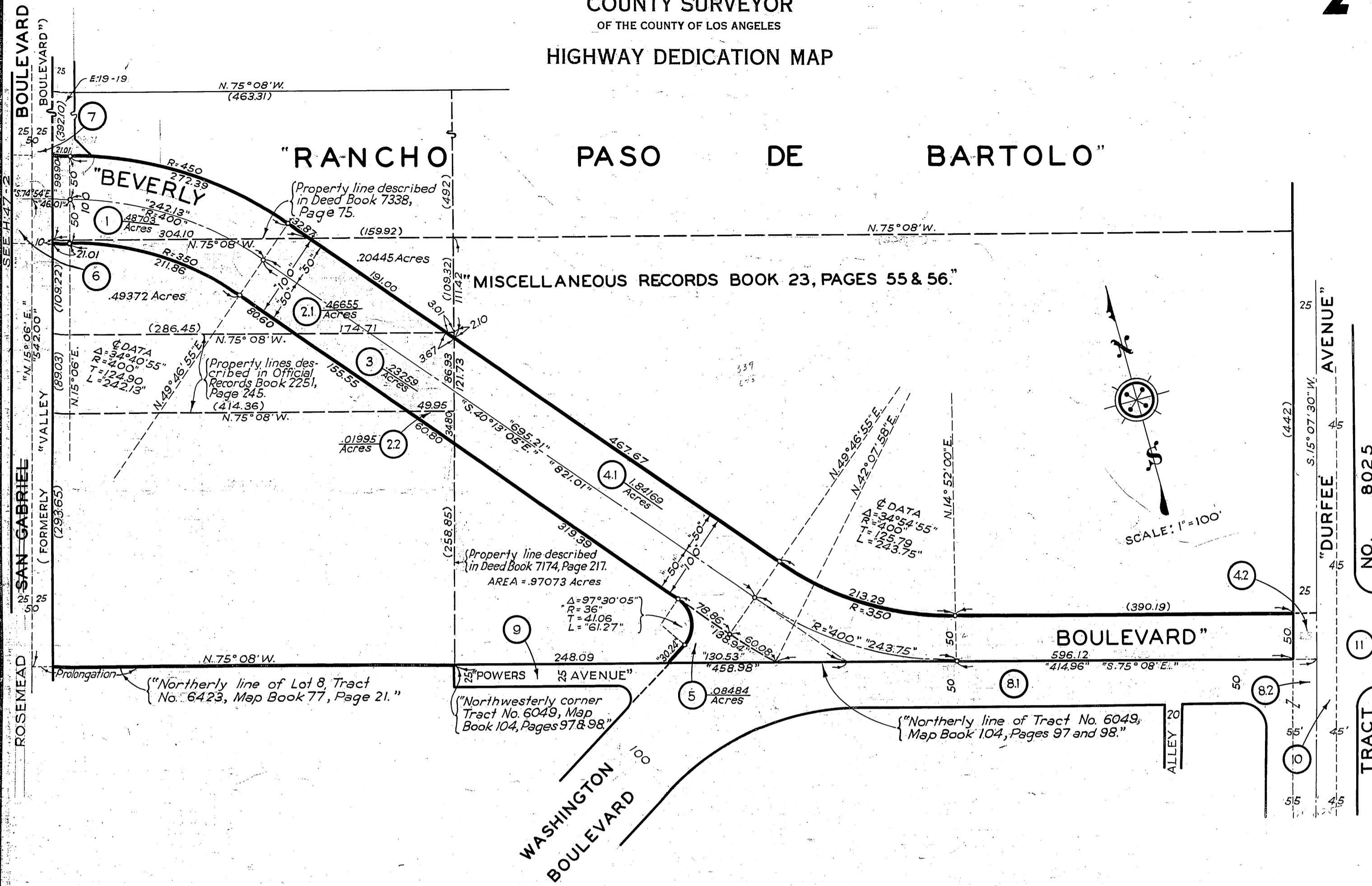
WORDS AND FIGURES SHOWN QUOTED ON MAP ARE AS DESCRIBED IN THE CONVEYANCE. FIGURES SHOWN IN PARENTHESES ON MAP ARE TAKEN FROM PREVIOUS RECORDS OR ARE CALCULATED THEREFROM. LAND INCLUDED IN CONVEYANCE SHOWN IN COLORED TINT. DEDICATION STATUS SCALE INDICATES RELATIVE IMPORTANCE OF GRANTEE'S INTERESTS IN EACH PARCEL.

POSTING CHECKED table with columns for H. D. MAP BOOK, SEARCH MAP, TRACTS, C.S.M., ASSESSOR'S BOOK, C. S. INDEX MAP

Main table with columns: LINE NO., PARCEL NO., OFFICIAL RECORDS, DATE RECORDED, 'D' BOOK PAGE, DATE OF CONVEYANCE, NATURE OF CONVEYANCE, PURPOSE, NAME, CONSIDERATION, CONDITIONS, GRANTEE, GRANTORS, DEDICATION STATUS SCALE, and various tracking columns.

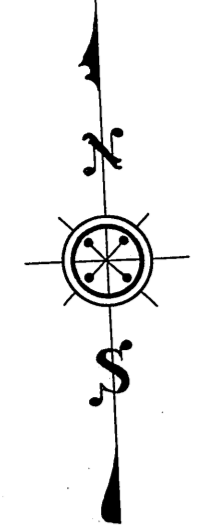
HIGHWAY DEDICATION MAP

"RANCHO PASO DE BARTOLO"

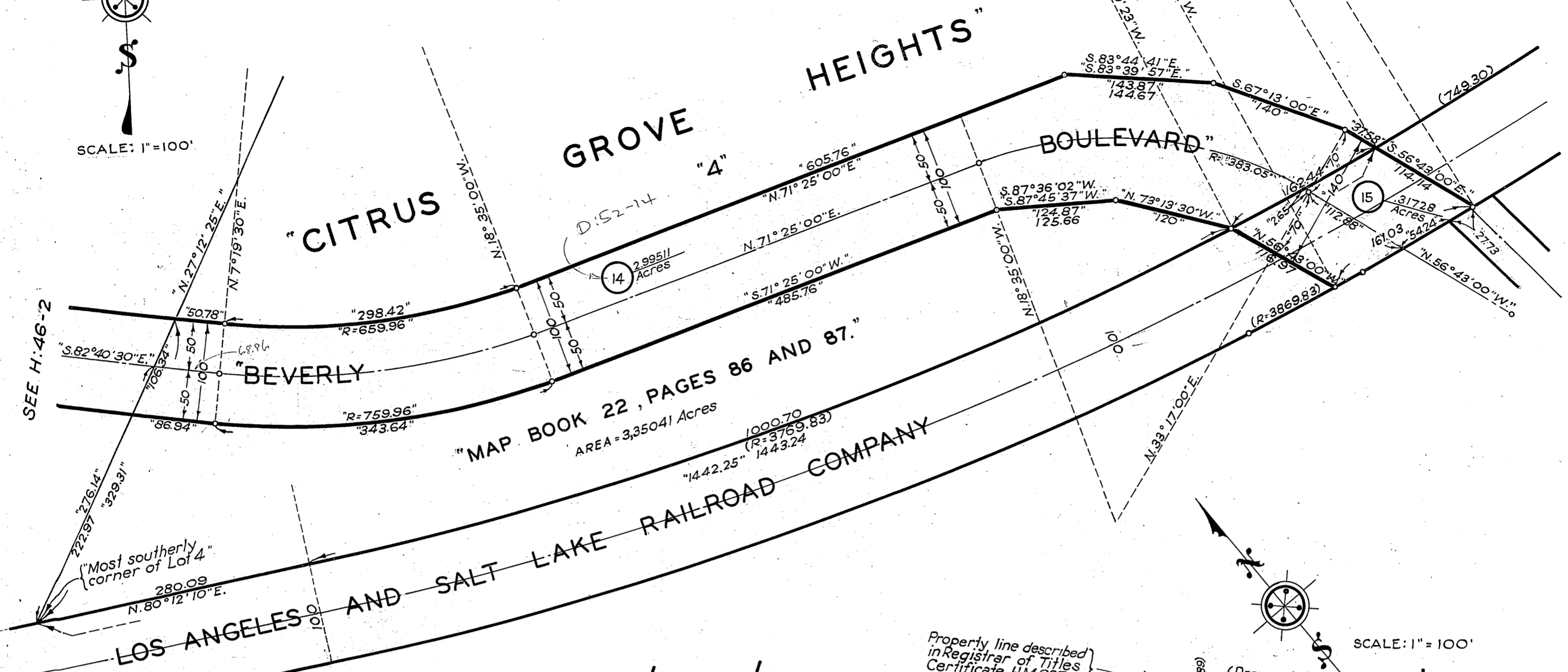


COMPILED BY	Silverman & Hamner	Aug. 1932.	C. S. INDEX MAP NO. 36, (E.C. 3) and 37, (A4)
CALCULATED BY	Silverman & Hamner	Aug. 1932.	ASSESSOR'S BOOK NO. 118
DRAWN BY	Silverman	Sept. 1932.	H: 46
TRACED BY	Silverman	Sept. 1932.	
CHECKED BY	Silverman & Dodds	Sept. 1932.	

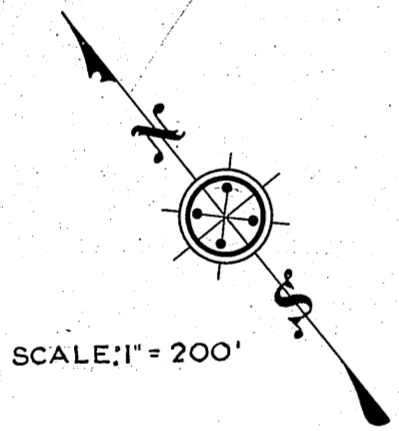
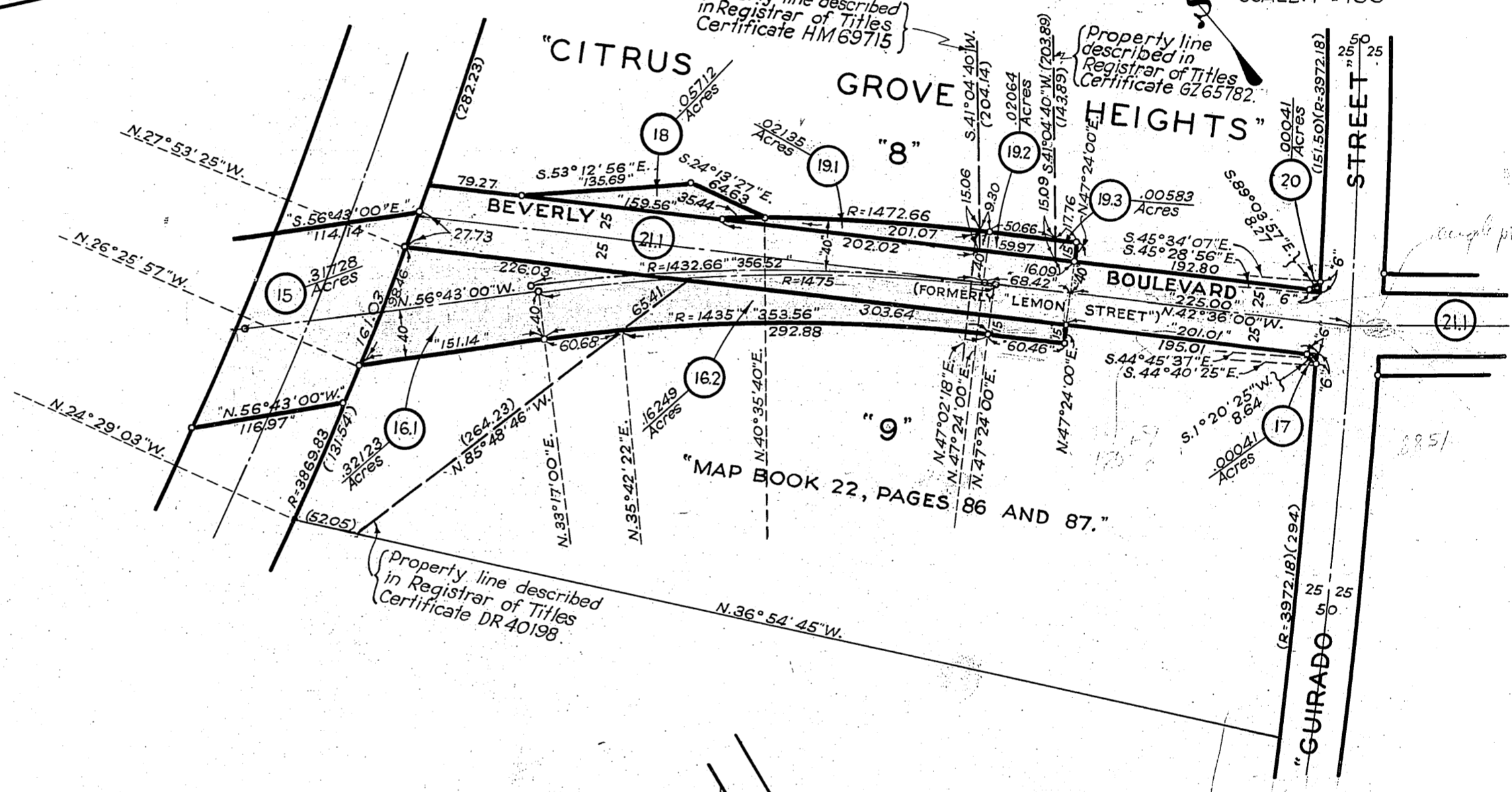
OFFICE OF THE
 COUNTY SURVEYOR
 OF THE COUNTY OF LOS ANGELES
 HIGHWAY DEDICATION MAP



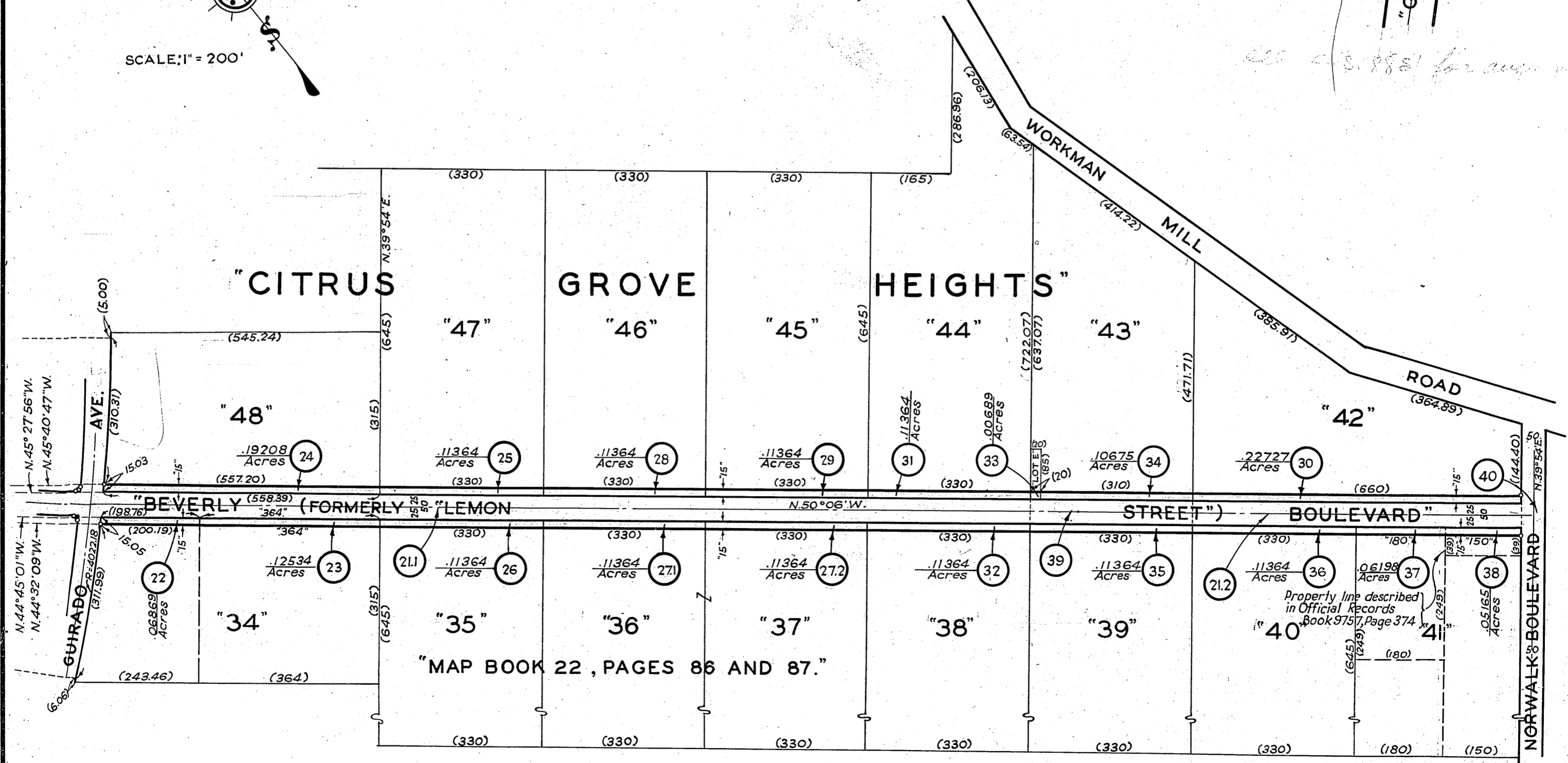
SCALE: 1" = 100'



SCALE: 1" = 100'



SCALE: 1" = 200'



COMPILED BY	Hamner	Aug. 1932	C. S. INDEX MAP NO. 37, (A-4)
CALCULATED BY	Hamner & Silverman	Aug. 1932	ASSESSOR'S BOOK NO. 349
DRAWN BY	Silverman	Sept. 1932	
TRACED BY	Silverman	Sept. 1932	
CHECKED BY	Dodds & Silverman	Sept. 1932	

H: 46