

OFFICE OF THE COUNTY SURVEYOR OF THE COUNTY OF LOS ANGELES HIGHWAY DEDICATION MAP

LEGEND

COUNTY SURVEYOR'S MAP NO. 8958 MAP NO. 7(E5) SEARCH MAP NO. ATLANTIC AVE. 34

FIELD BOOK NO. PUBLIC TITLE COMPLETE FEE SUBORDINATED (title incomplete)

WORDS AND FIGURES SHOWN QUOTED ON MAP ARE AS DESCRIBED CONVEYANCE. FIGURES SHOWN IN PARENTHESES ON MAP ARE PREVIOUS RECORDS OR ARE CALCULATED THEREFROM. LAND IN CONVEYANCE SHOWN IN COLORED TINT. DEDICATION STATUS SCALE INDICATES RELATIVE IMPORTANCE OF GRANTEE'S INTERESTS

Table with columns for DEDICATION STATUS SCALE and POSTING CHECKED, including sub-columns for FEE, DEED, MORTGAGES, LIENS, EASEMENTS, LEASES, PURCHASE CONTRACT, H. D. MAP BOOK, SEARCH MAP, TRACTS, C.S.M., ASSESSOR'S BOOK, C.S. INDEX MAP.

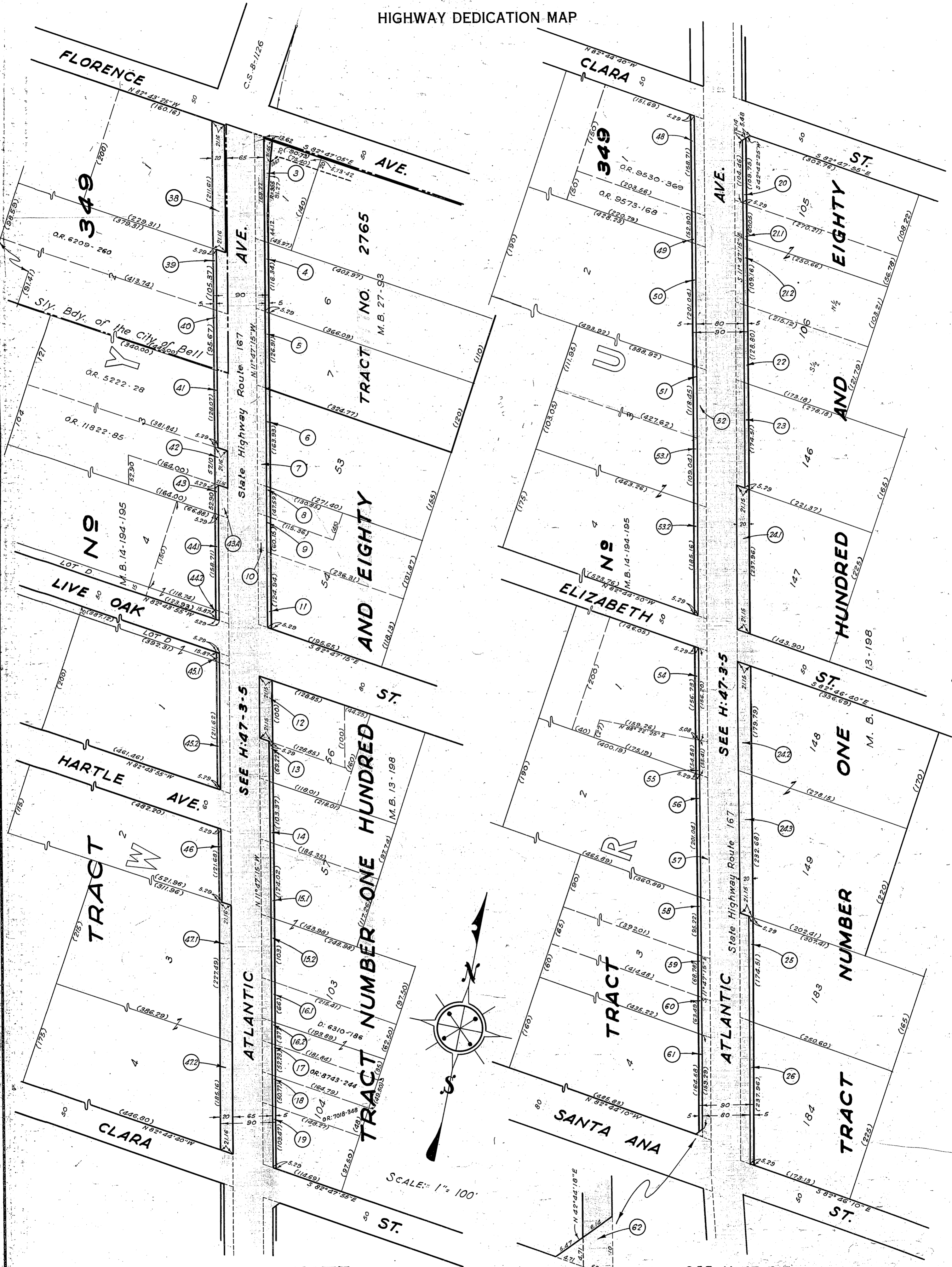
Main table with columns: LINE NO., PARCEL NO., OFFICIAL RECORDS (CERTIFICATE NO., DOC. NO., PAGE), DATE RECORDED, 'D' BOOK PAGE, DATE OF CONVEYANCE, NATURE OF CONVEYANCE, PURPOSE, NAME, CONSIDERATION, CONDITIONS, GRANTEE, GRANTORS. Includes entries for Atlantic Ave. parcels 1 through 90.

Vertical handwritten text on the left margin: X 45-3-13-11

Vertical handwritten text on the left margin: X

OFFICE OF THE
COUNTY SURVEYOR
OF THE COUNTY OF LOS ANGELES

HIGHWAY DEDICATION MAP



SEE H:47-3-5

SEE H:47-3-5

SEE H:47-21

NOTE:
SUPERSEDED BY
C. S. B-1126
(STATE HIGHWAY MAP)

COMPILED BY	Hughes	Oct. 1935	C. S. INDEX MAP NO. 7(E5)
CALCULATED BY	"	"	ASSESSOR'S BOOK NO. 333-757
DRAWN BY	"	"	
TRACED BY	"	"	
CHECKED BY	Arnoff	Feb. 1936	

H:47

