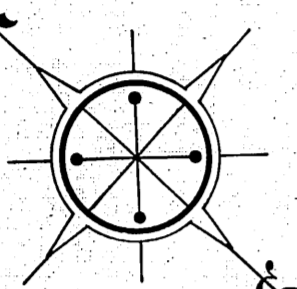
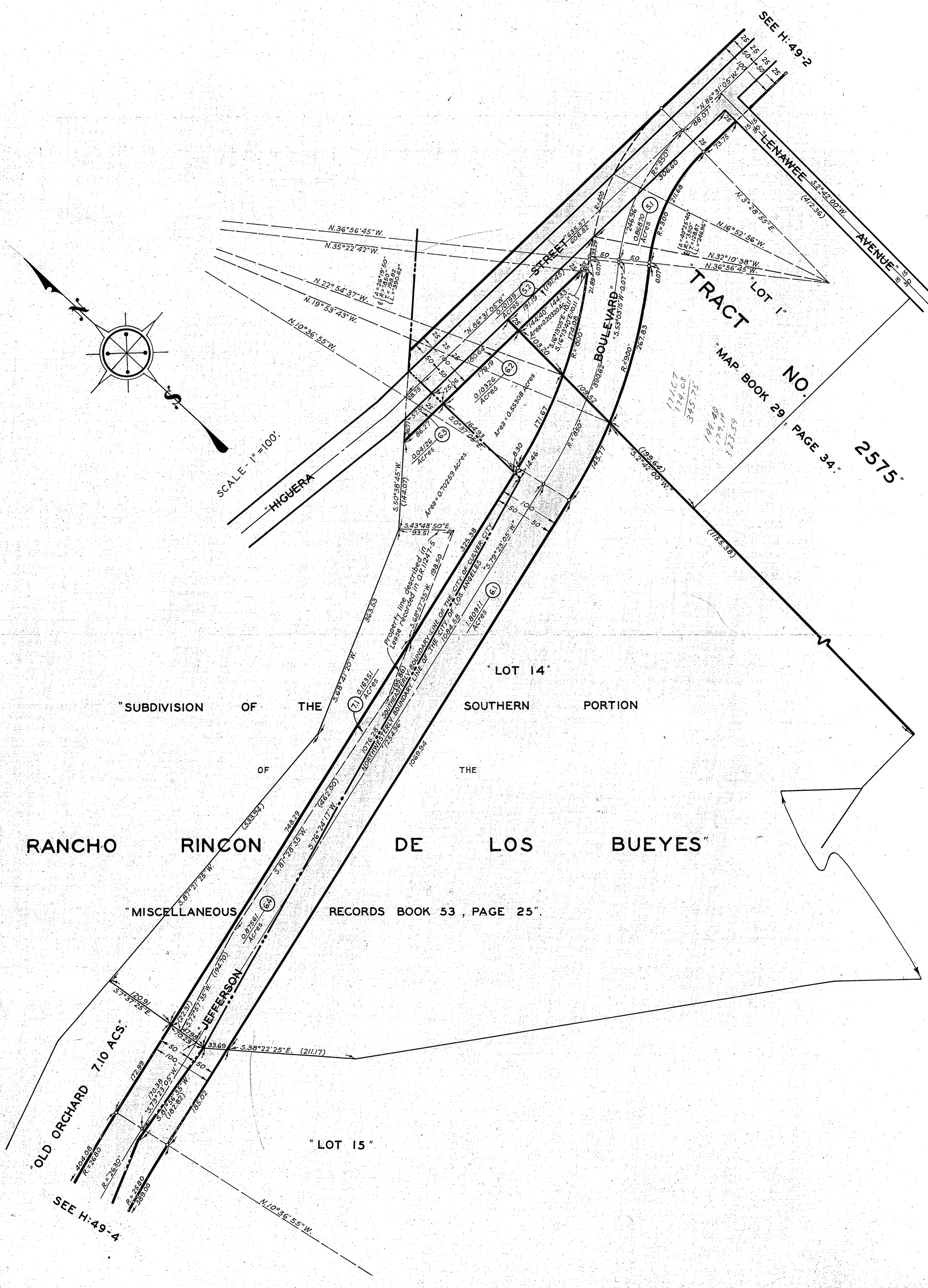


OFFICE OF THE
COUNTY SURVEYOR
 OF THE COUNTY OF LOS ANGELES
HIGHWAY DEDICATION MAP



SCALE - 1" = 100'

TRACT "LOT 1"
 "MAP BOOK 29, PAGE 34"
 2575'

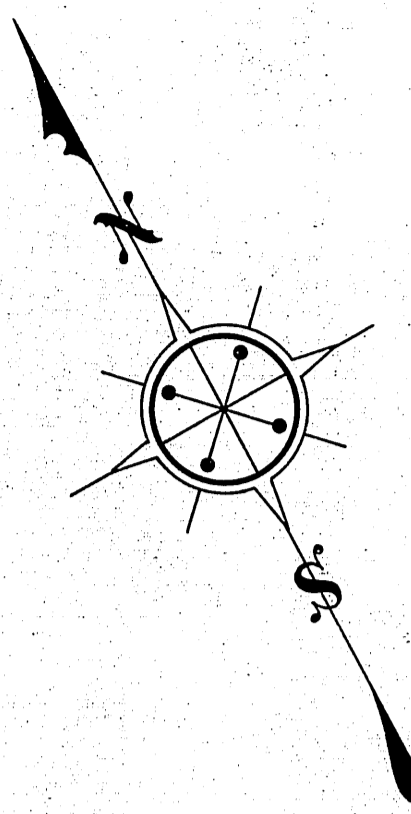
"SUBDIVISION OF THE SOUTHERN PORTION OF THE RANCHO RINCON DE LOS BUEYES"
 "MISCELLANEOUS RECORDS BOOK 53, PAGE 25"

"OLD ORCHARD 7.10 ACS"
 SEE H:49-A

COMPILED BY	Green	July, 1932	C. S. INDEX MAP NO. 24, (A1)
CALCULATED BY	"	"	ASSESSOR'S BOOK NO. 369 & 637
DRAWN BY	"	Aug. 1932	H:49
TRACED BY	"	Sept. 1932	
CHECKED BY	Dodds	Oct. 1932	

OFFICE OF THE
 COUNTY SURVEYOR
 OF THE COUNTY OF LOS ANGELES
 HIGHWAY DEDICATION MAP

4
 SEE H:49-3

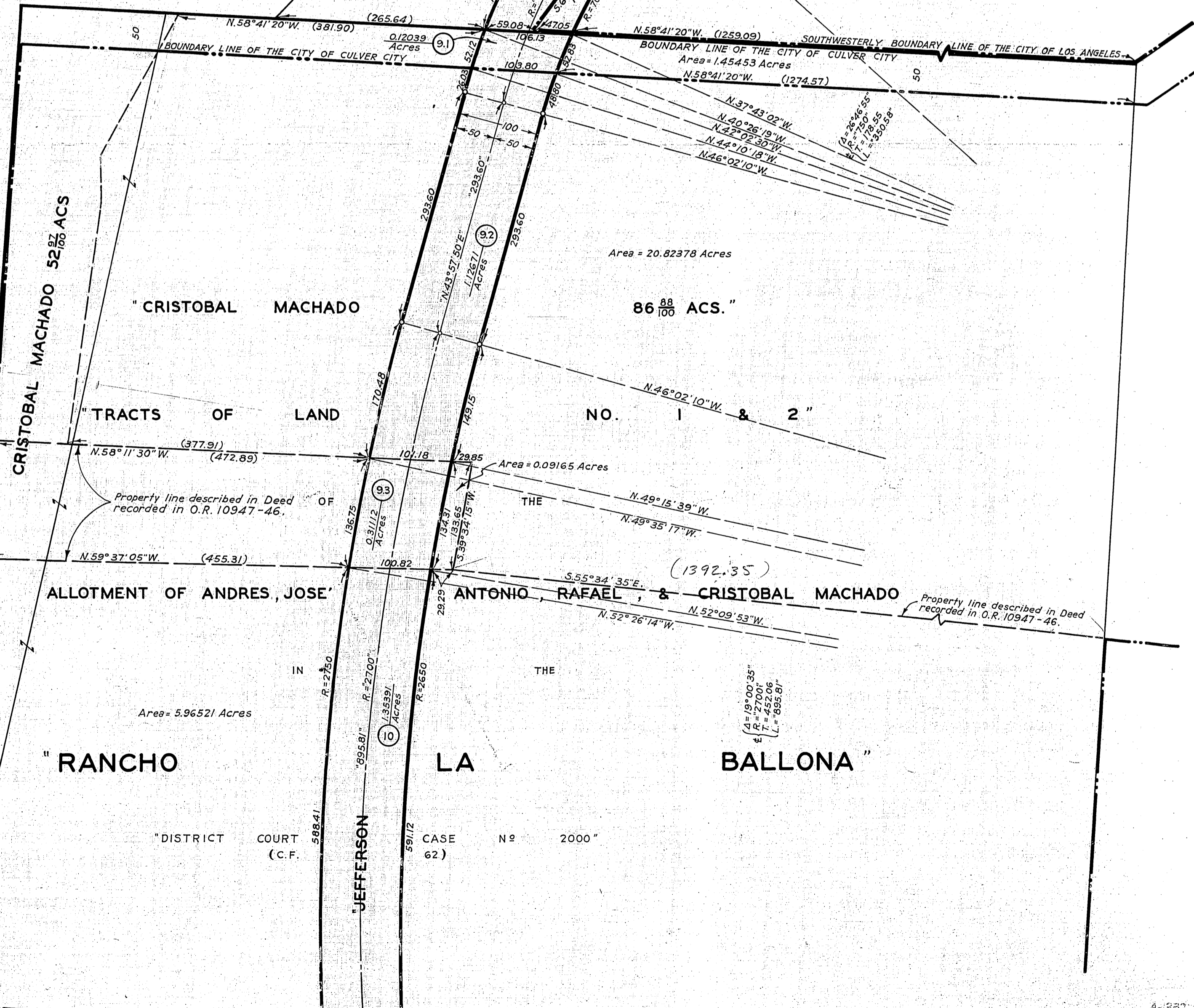


SCALE - 1" = 100'

"SUBDIVISION OF THE SOUTHERN PORTION OF THE RANCHO RINCON DE LOS BUEYES"

"MISCELLANEOUS RECORDS BOOK 53, PAGE 25"

"LOT 15"



DUQUESNE AVENUE
 SEE H: 49-1
 N. 58° 08' 15\"/>

SEE H: 50-1

COMPILED BY	Green	July, 1932	C. S. INDEX MAP NO. 23, (E1), 24, (A1)
CALCULATED BY	"	"	ASSESSOR'S BOOK NO. (353) & 745
DRAWN BY	"	Aug. 1932	
TRACED BY	"	Sept. 1932	
CHECKED BY	Dodds	Oct. 1932	

H:49