

3

OFFICE OF THE COUNTY SURVEYOR OF THE COUNTY OF LOS ANGELES HIGHWAY DEDICATION MAP

LEGEND

COUNTY SURVEYOR'S MAP NO. 6-656, SHEET 1 MAP NO. INDEX MAP NO. 32(2D); 33(2A) SEARCH MAP NO. PARAMOUNT BLVD. (2)

FIELD BOOK NO. 456 FIELD BOOK NO. PROPERTY LINES DESCRIBED IN LOS ANGELES COUNTY RECORDER'S RECORDS ARE SHOWN THUS: O.R. 9999-99 = Official Records Book 9999, Page 99 D: 888-88 = Deed Book 888, Page 88 Cert: X 7777 = Registrar's Certificate of Title No. X 7777.

WORDS AND FIGURES SHOWN QUOTED ON MAP ARE AS DESCRIBED IN THE CONVEYANCE. FIGURES SHOWN IN PARENTHESES ON MAP ARE TAKEN FROM PREVIOUS RECORDS OR ARE CALCULATED THEREFROM. LAND INCLUDED IN CONVEYANCE SHOWN IN COLORED TINT. DEDICATION STATUS SCALE INDICATES RELATIVE IMPORTANCE OF GRANTEE'S INTERESTS IN EACH PARCEL.

POSTING CHECKED table with columns for H. D. MAP BOOK, SEARCH MAP, TRACTS, C.S.M., ASSESSOR'S BOOK, C. S. INDEX MAP.

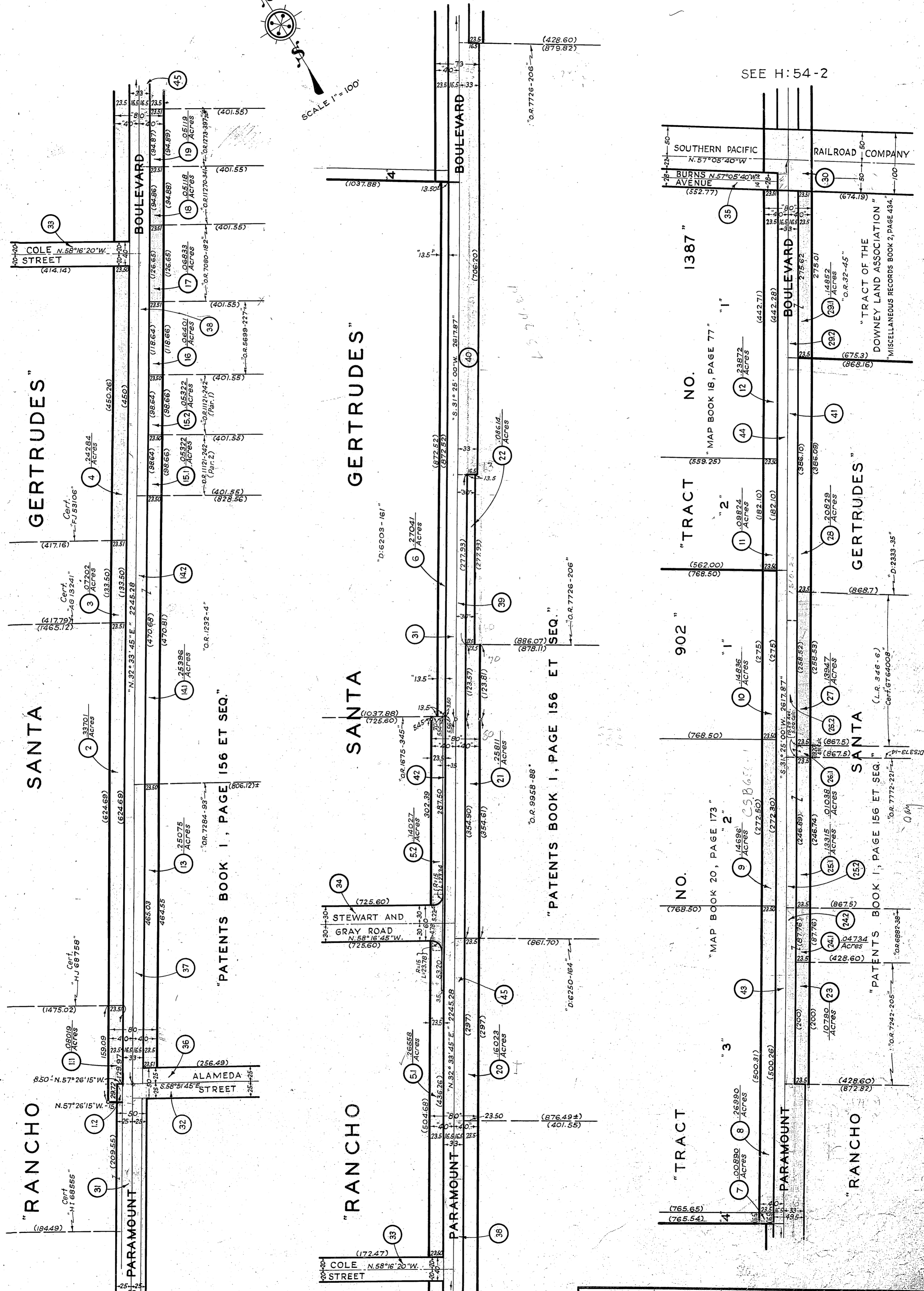
Main table with columns: LINE NO., PARCEL NO., OFFICIAL RECORDS, DATE RECORDED, 'D' BOOK, DATE OF CONVEYANCE, NATURE OF CONVEYANCE, PURPOSE, NAME, GRANTOR, GRANTEE, DEDICATION STATUS SCALE, and various tracking columns.

OFFICE OF THE  
 COUNTY SURVEYOR  
 OF THE COUNTY OF LOS ANGELES

HIGHWAY DEDICATION MAP

4

SEE H:54-2



COMPILED BY	S. Silverman	Feb. 1933	C. S. INDEX MAP NO. 32 (D2) 33 (A2)
CALCULATED BY	S. Silverman	Jan. 1933	ASSESSOR'S BOOK NO. 119, 350, 494
DRAWN BY	"	Feb. 1933	
TRACED BY	"	"	
CHECKED BY	V.A. Kauffman	"	

H:54