

OFFICE OF THE COUNTY SURVEYOR OF THE COUNTY OF LOS ANGELES

HIGHWAY DEDICATION MAP

LEGEND

COUNTY SURVEYOR'S MAP NO. 3785-1,2,3 FIELD BOOK NO. 105

Clerk's Filed MAP NO. 1655 FIELD BOOK NO.

INDEX MAP NO. 32(C.D.-1)

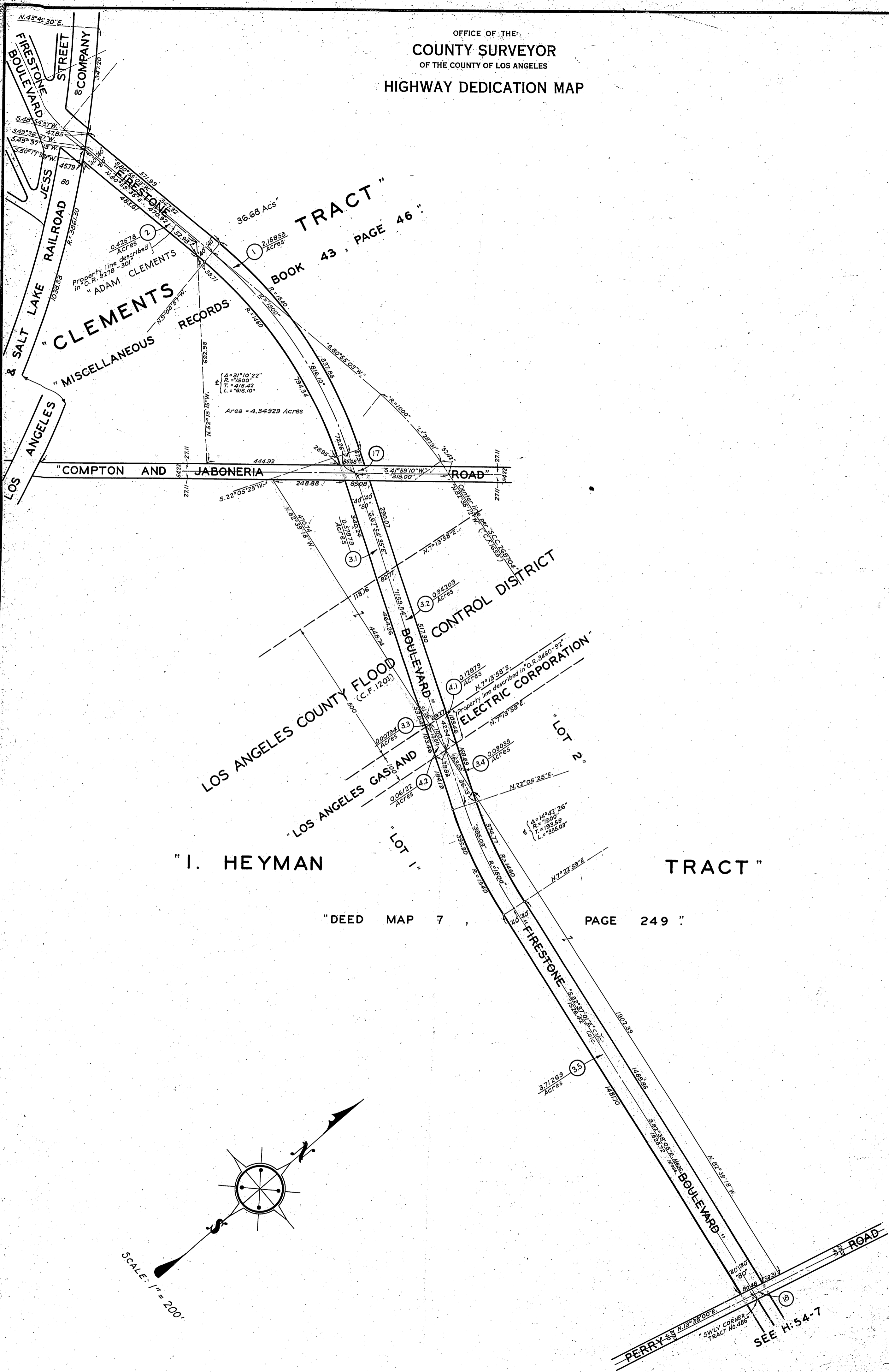
SEARCH MAP NO'S. Firestone Boulevard (6), Old River School Road (1), Andrews Street (7)

WORDS AND FIGURES SHOWN QUOTED ON MAP ARE AS DESCRIBED IN THE CONVEYANCE. FIGURES SHOWN IN PARENTHESES ON MAP ARE TAKEN FROM PREVIOUS RECORDS OR ARE CALCULATED THEREFROM. LAND INCLUDED IN CONVEYANCE SHOWN IN COLORED TINT. DEDICATION STATUS SCALE INDICATES RELATIVE IMPORTANCE OF GRANTEE'S INTERESTS IN EACH PARCEL.

Posting Checked table with columns: H. D. MAP BOOK, SEARCH MAP, TRACTS - C.S.M., ASSESSOR'S BOOK, C. S. INDEX MAP

Main table with columns: LINE NO., PARCEL NO., OFFICIAL RECORDS, DATE RECORDED, DATE OF CONVEYANCE, NATURE OF CONVEYANCE, PURPOSE, NAME, GRANTOR, GRANTORS, DEDICATION STATUS SCALE, and various tracking columns.

OFFICE OF THE
COUNTY SURVEYOR
OF THE COUNTY OF LOS ANGELES
HIGHWAY DEDICATION MAP

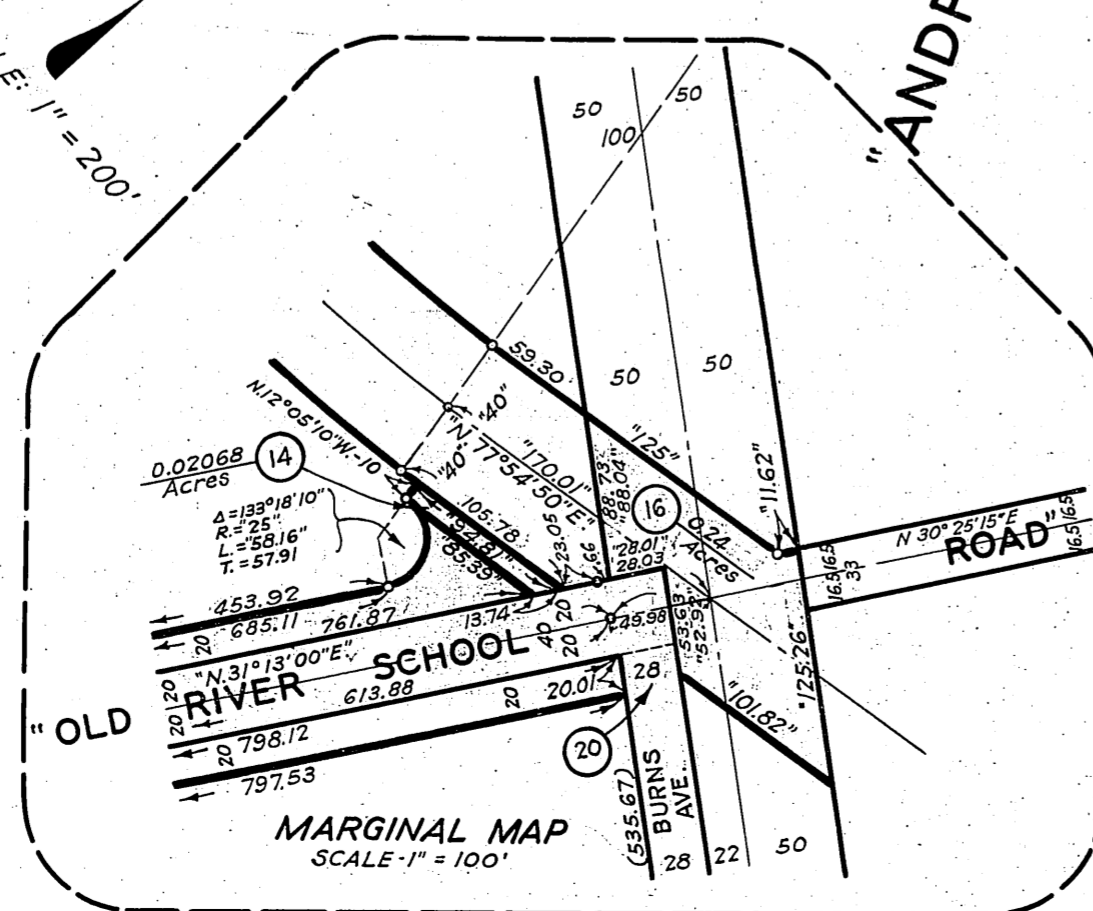
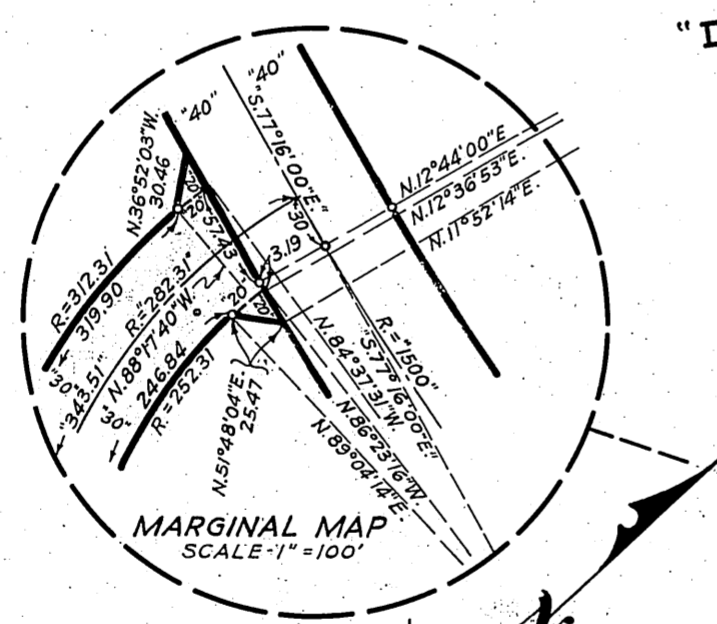
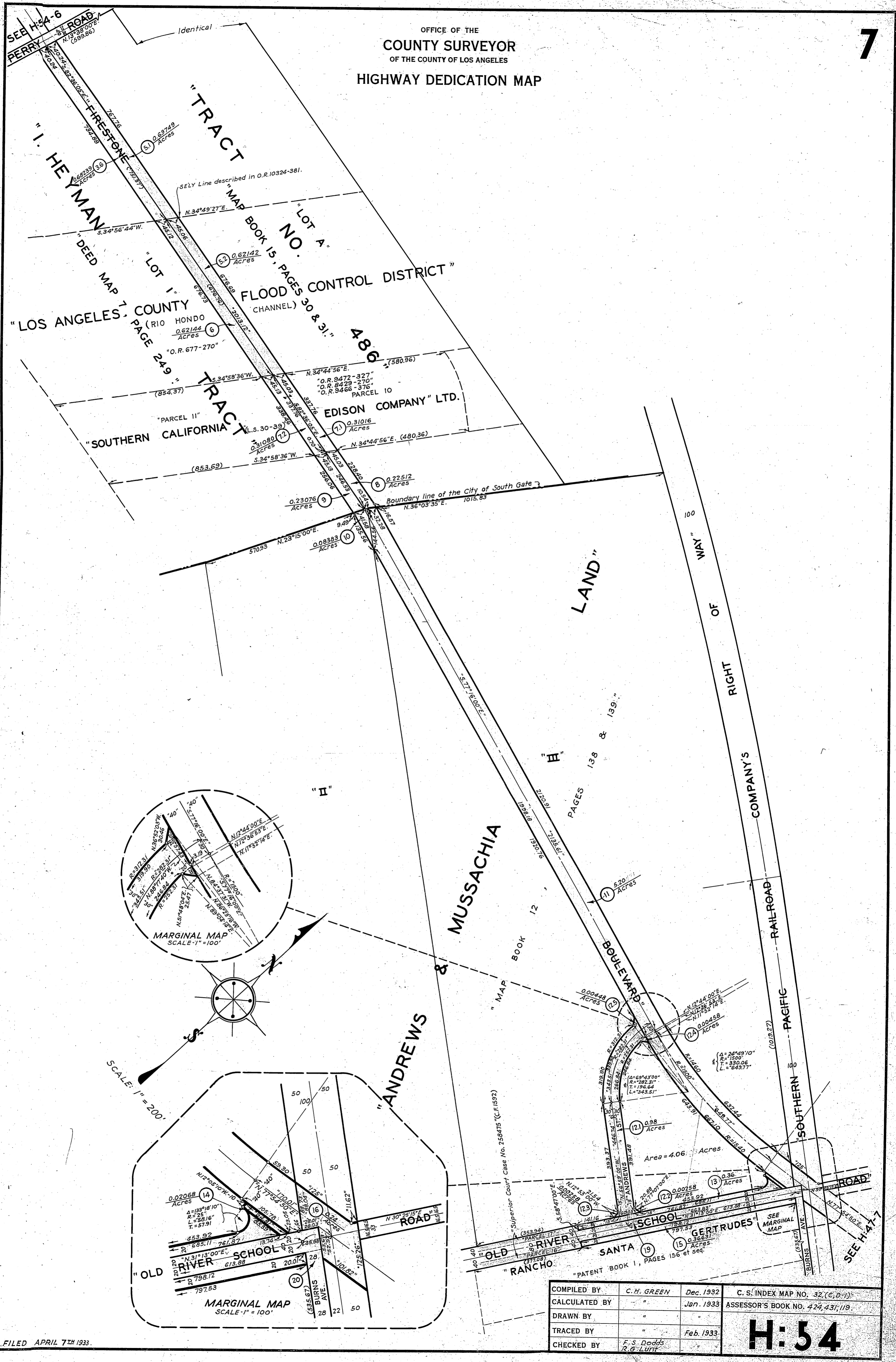


FILED APRIL 7TH 1933.

COMPILED BY	C. H. GREEN	Dec. 1932	C. S. INDEX MAP NO. 32, (C-1)
CALCULATED BY	"	Jan. 1933	ASSESSOR'S BOOK NO. 424, 431, 119.
DRAWN BY	"	"	
TRACED BY	"	Feb. 1933	
CHECKED BY	E. S. DODDS R. G. LUTE		

H: 54

OFFICE OF THE
COUNTY SURVEYOR
OF THE COUNTY OF LOS ANGELES
HIGHWAY DEDICATION MAP



COMPILED BY	C. H. GREEN	Dec. 1932	C. S. INDEX MAP NO. 32, (C. D. 7)
CALCULATED BY	"	Jan. 1933	ASSESSOR'S BOOK NO. 424, 431, 119
DRAWN BY	"	"	"
TRACED BY	"	Feb. 1933	"
CHECKED BY	F. S. Dodds R. G. Lunt	"	"

H:54