

OFFICE OF THE COUNTY SURVEYOR OF THE COUNTY OF LOS ANGELES HIGHWAY DEDICATION MAP

LEGEND

COUNTY SURVEYOR'S MAP NO. B-117-1 MAP NO. INDEX MAP NO. 33(A-2) SEARCH MAP NO. Bellflower Blvd., Margaret St., Iowa St.

FIELD BOOK NO. PUBLIC TITLE COMPLETE FEE SUBORDINATED (Title incomplete) HIGHWAY VACATIONS

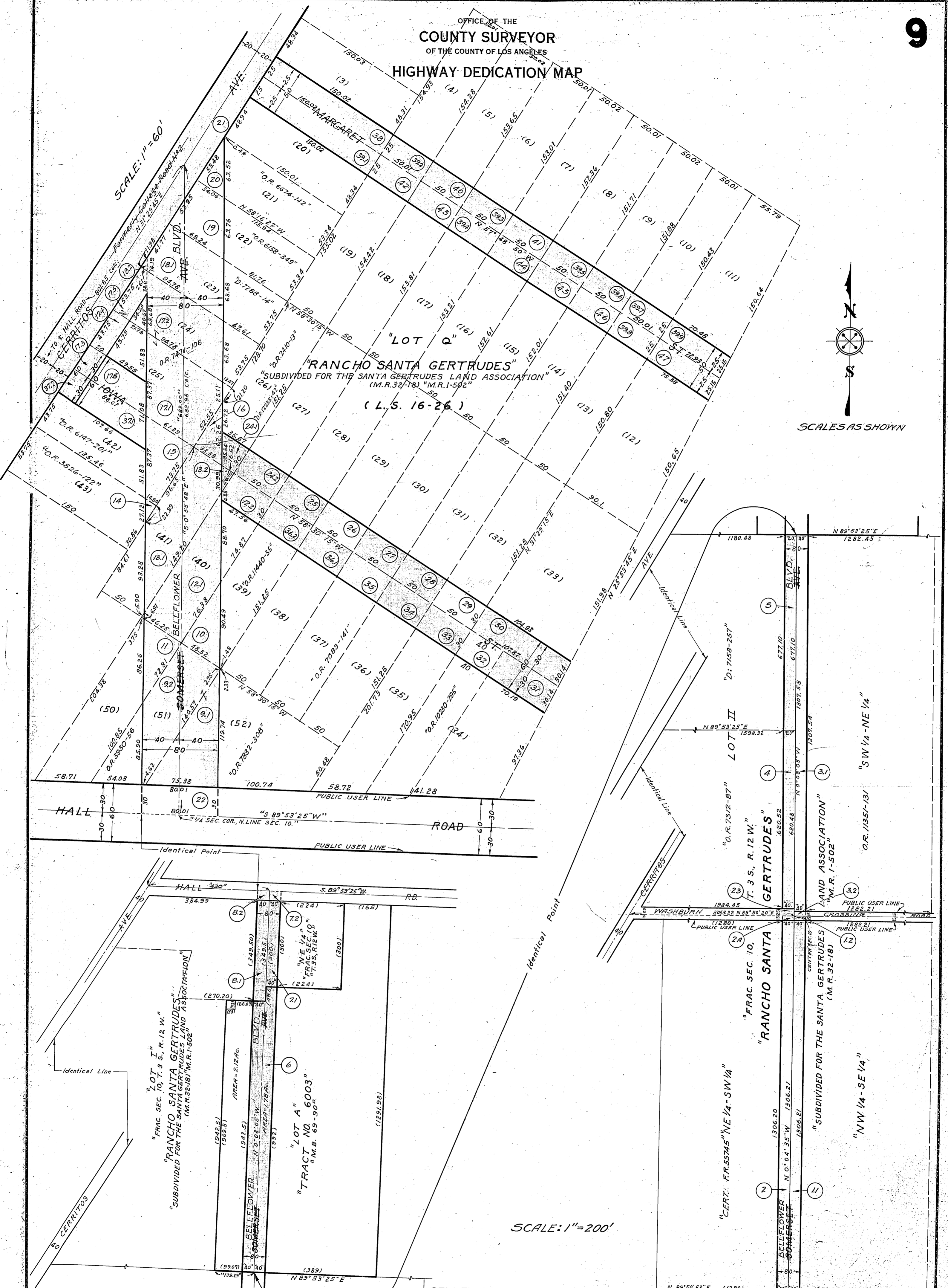
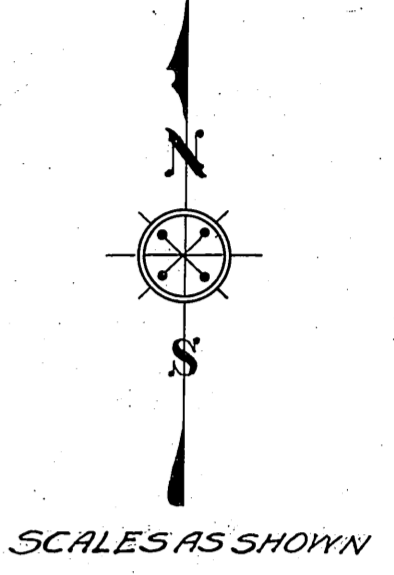
WORDS AND FIGURES SHOWN QUOTED ON MAP ARE AS DESCRIBED IN THE CONVEYANCE. FIGURES SHOWN IN PARENTHESES ON MAP ARE TAKEN FROM PREVIOUS RECORDS OR ARE CALCULATED THEREFROM. LAND INCLUDED IN CONVEYANCE SHOWN IN COLORED TINT. DEDICATION STATUS SCALE INDICATES RELATIVE IMPORTANCE OF GRANTEE'S INTERESTS IN EACH PARCEL.

POSTING CHECKED table with columns for H. D. MAP BOOK, SEARCH MAP, TRACTS, C.S.M., ASSESSOR'S BOOK, C. S. INDEX MAP.

Main table with columns: LINE NO., PARCEL NO., OFFICIAL RECORDS, DATE RECORDED, 'D' BOOK, DATE OF CONVEYANCE, NATURE OF CONVEYANCE, PURPOSE, NAME, CONSIDERATION, CONDITIONS, GRANTEE, GRANTORS, DEDICATION STATUS SCALE (1-10), and various tracking columns.

OFFICE OF THE
COUNTY SURVEYOR
OF THE COUNTY OF LOS ANGELES
HIGHWAY DEDICATION MAP

SCALE: 1"=60'



SCALE: 1"=200'

BELLFLOWER BLVD.
NOW A STATE HIGHWAY
FOR ALIGNMENT SEE C.S. B-117-1706

COMPILED BY	Hughes & Lunt	Mar. 1934	C. S. INDEX MAP NO. 33 (A2.3)
CALCULATED BY	Hughes	"	ASSESSOR'S BOOK NO. 389 & 494
DRAWN BY	Card	"	
TRACED BY	Blackmer & Card	April, 1934	
CHECKED BY	Lunt	"	

H: 54

SEE H: 54-12