

OFFICE OF THE COUNTY SURVEYOR OF THE COUNTY OF LOS ANGELES HIGHWAY DEDICATION MAP

LEGEND

COUNTY SURVEYOR'S MAP NO. B-117-1 & 2 FIELD BOOK NO. 302 MAP NO. FIELD BOOK NO. FDI-1-53 & 54 (Rd. Dept.) INDEX MAP NO. 33 (A. 3.4) SEARCH MAP NO. Bellflower Blvd. (7)

WORDS AND FIGURES SHOWN QUOTED ON MAP ARE AS DESCRIBED IN THE CONVEYANCE. FIGURES SHOWN IN PARENTHESES ON MAP ARE TAKEN FROM PREVIOUS RECORDS OR ARE CALCULATED THEREFROM. LAND INCLUDED IN CONVEYANCE SHOWN IN COLORED TINT. DEDICATION STATUS SCALE INDICATES RELATIVE IMPORTANCE OF GRANTEE'S INTERESTS IN EACH PARCEL.

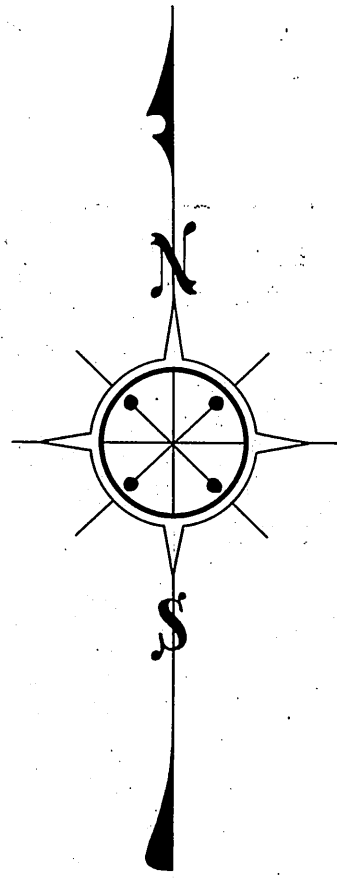
POSTING CHECKED table with columns for H. D. MAP BOOK, SEARCH MAP, TRACTS, C.S.M., ASSESSOR'S BOOK, C. S. INDEX MAP.

Main table with columns: LINE NO., PARCEL NO., OFFICIAL RECORDS, DATE RECORDED, 'D' BOOK PAGE, DATE OF CONVEYANCE, NATURE OF CONVEYANCE, PURPOSE, NAME, GRANTOR, GRANTORS, DEDICATION STATUS SCALE, and various tracking columns.

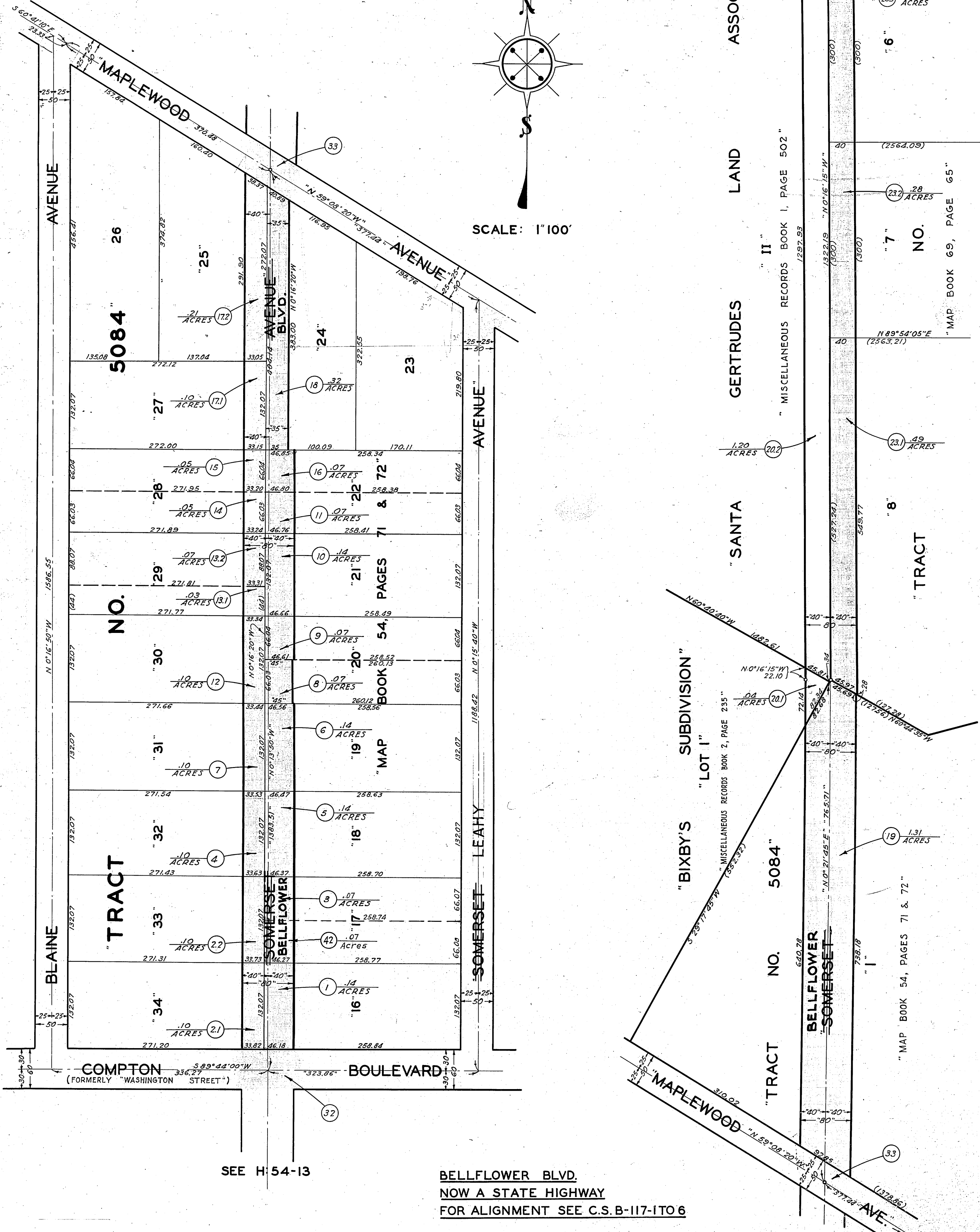
OFFICE OF THE
COUNTY SURVEYOR
 OF THE COUNTY OF LOS ANGELES
HIGHWAY DEDICATION MAP

SEE H:54-12

"FRAC. SEC. 15
 T.3S. R.12W."



SCALE: 1"=100'



SEE H:54-13

BELLFLOWER BLVD.
 NOW A STATE HIGHWAY
 FOR ALIGNMENT SEE C.S. B-117-1TO 6

COMPILED BY	W. E. Rose	Mar. 1933	C. S. INDEX MAP NO. 33(A,34)
CALCULATED BY	Rose & Dadds	Apr. 1933	ASSESSOR'S BOOK NO. 483, 490, 495
DRAWN BY	C. H. Hughes	June 1933	
TRACED BY	"	"	
CHECKED BY	Dadds & Lunt	"	

H: 54

