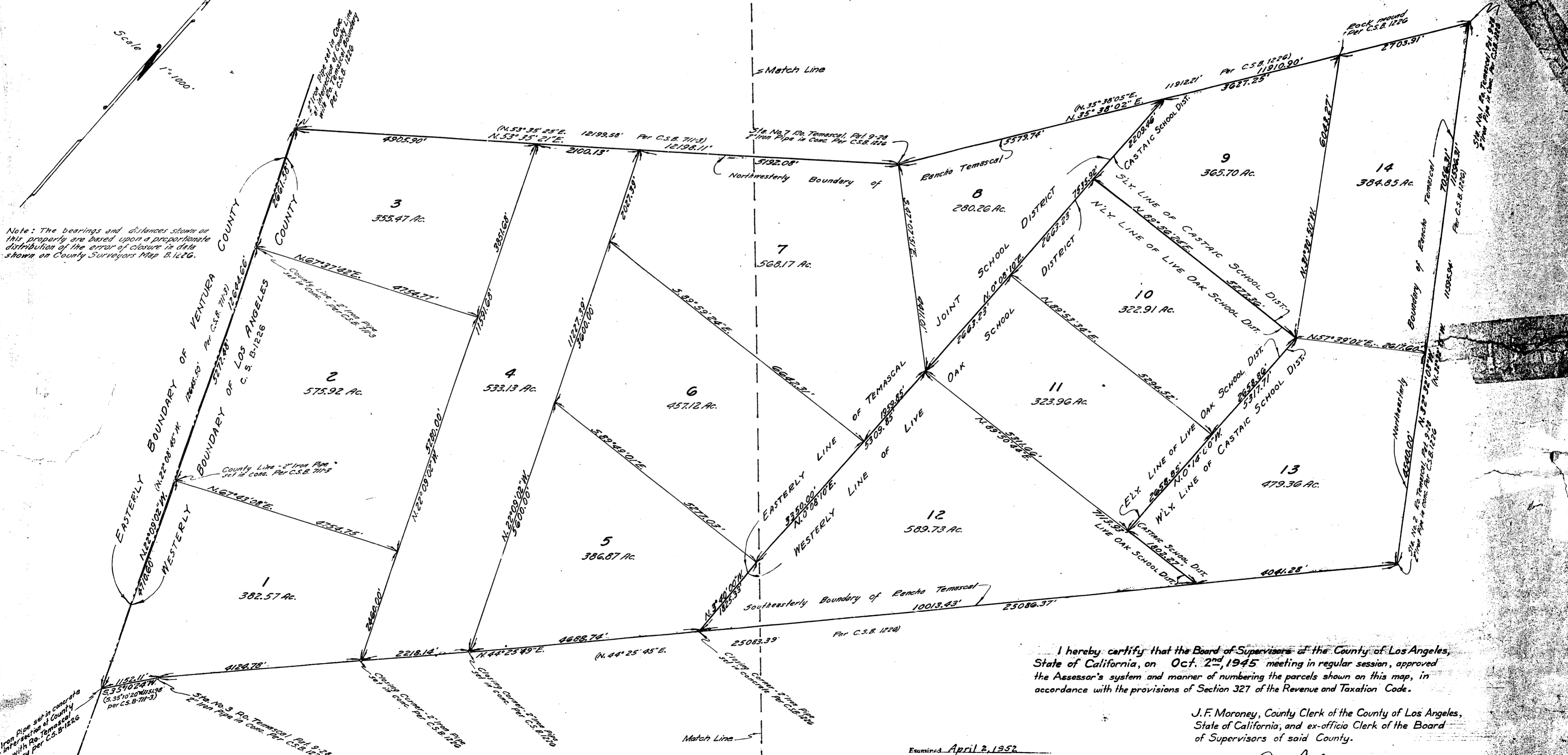


PORTION OF THE RANCHO TEMASCAL

WITHIN THE COUNTY OF LOS ANGELES

COMPILED BY
CHARLES C. MILLER R.E.122
 CIVIL ENGINEER
 LOS ANGELES, CALIFORNIA.
 APRIL 6, 1945



Note: The bearings and distances shown on this property are based upon a proportionate distribution of the error of closure in data shown on County Surveyors Map B.1226.

I hereby certify that the Board of Supervisors of the County of Los Angeles, State of California, on Oct. 2nd, 1945 meeting in regular session, approved the Assessor's system and manner of numbering the parcels shown on this map, in accordance with the provisions of Section 327 of the Revenue and Taxation Code.

J.F. Moroney, County Clerk of the County of Los Angeles,
 State of California, and ex-officio Clerk of the Board
 of Supervisors of said County.

By Harold A. Harris Deputy

Examined April 2, 1952
 WILLIAM J. FOX, County Surveyor
 By Harold A. Harris Deputy

L.A.C.A. MAP NO. 54
 ASSESSORS MAPS BOOK 1, PAGE 2

Recorded Feb. 28, 1952

L.A.C.A. MAP No. 54
 ASSESSORS MAPS BOOK 1 PAGE 2 Neg 627