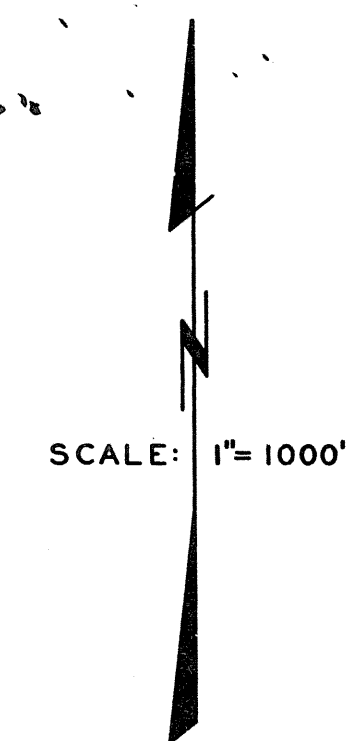
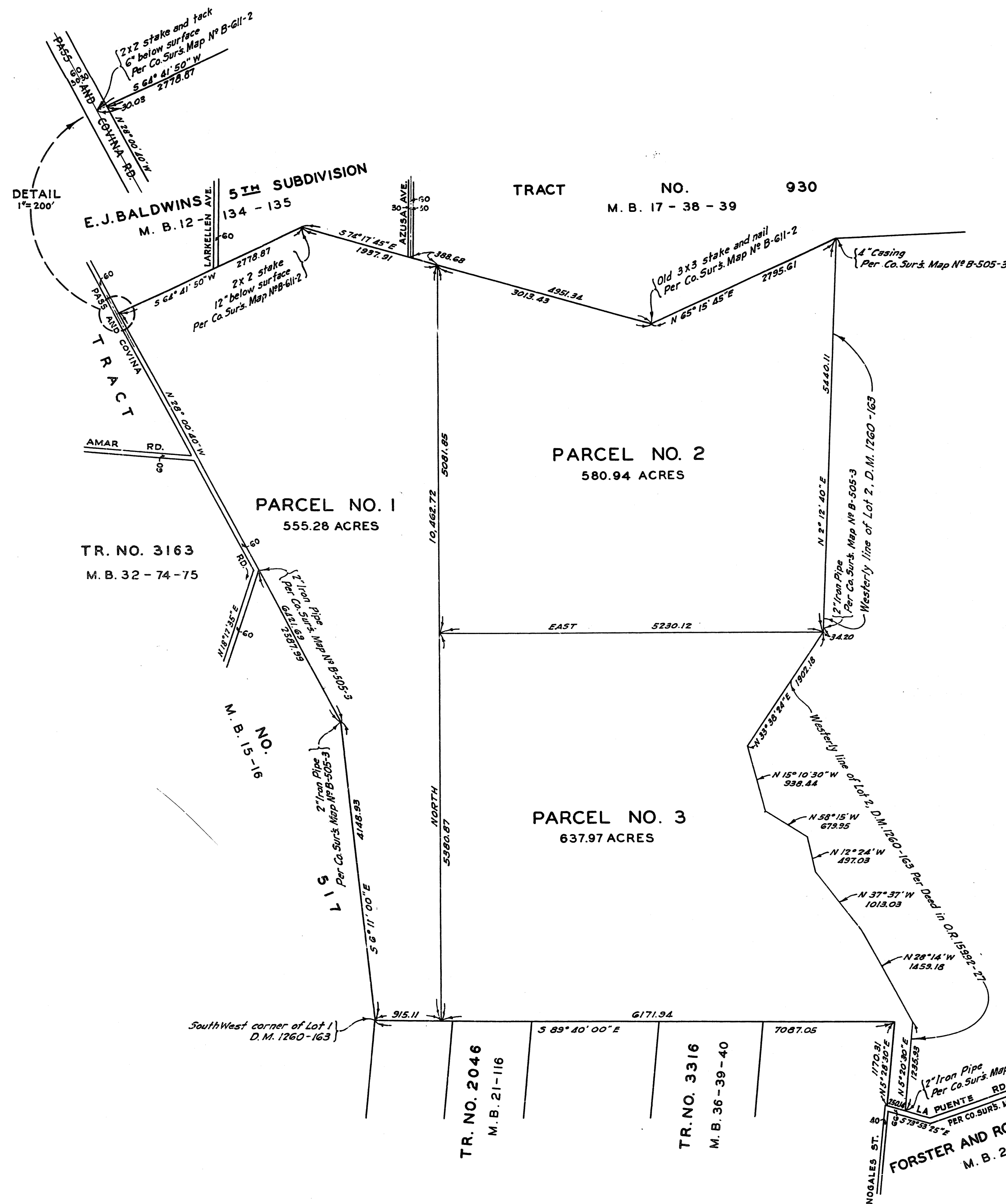


I hereby certify that the Board of Supervisors of the County of Los Angeles, State of California, on June 18, 1946 meeting in regular session, approved the Assessor's system and manner of numbering the parcels shown on this map, in accordance with the provisions of Section 327 of the Revenue and Taxation Code.

J. F. MORDNEY, County Clerk of the County of Los Angeles, State of California, and ex-officio, clerk of the Board of Supervisors of said County

By Wm. J. Fox Deputy

Examined April 2, 1952
 WILLIAM J. FOX, County Surveyor
 By Harold T. Harris Deputy



MAP SHOWING
 THAT PORTION OF THE
RANCHO LA PUENTE
 ALLOTTED TO LOUIS SENTOUS
 BEING LOT NO. 1 AS SHOWN ON
 MAP RECORDED IN BOOK 1260,
 PAGE 163 OF DEEDS, RECORDS
 OF THE COUNTY OF LOS ANGELES.

MAY 1946

L. A. C. A. MAP NO. 57
 ASSESSOR'S MAPS, BOOK 1 PAGE 5

I hereby certify that I am the Assistant Secretary of The Sentous Holding Company, owners of the land included within the numbered parcels shown on this map, and that such map, consisting of one sheet and designating parcels numbered 1 to 3 inclusive, for the description of land by reference thereto for assessment purposes, was compiled from records of the County of Los Angeles, and is hereby offered for filing with the Assessor of the County of Los Angeles, under provisions of Sec. 326 of the Revenue and Taxation Code, of the State of California.

W. J. Fox May 27, 1946

Wm. J. Fox