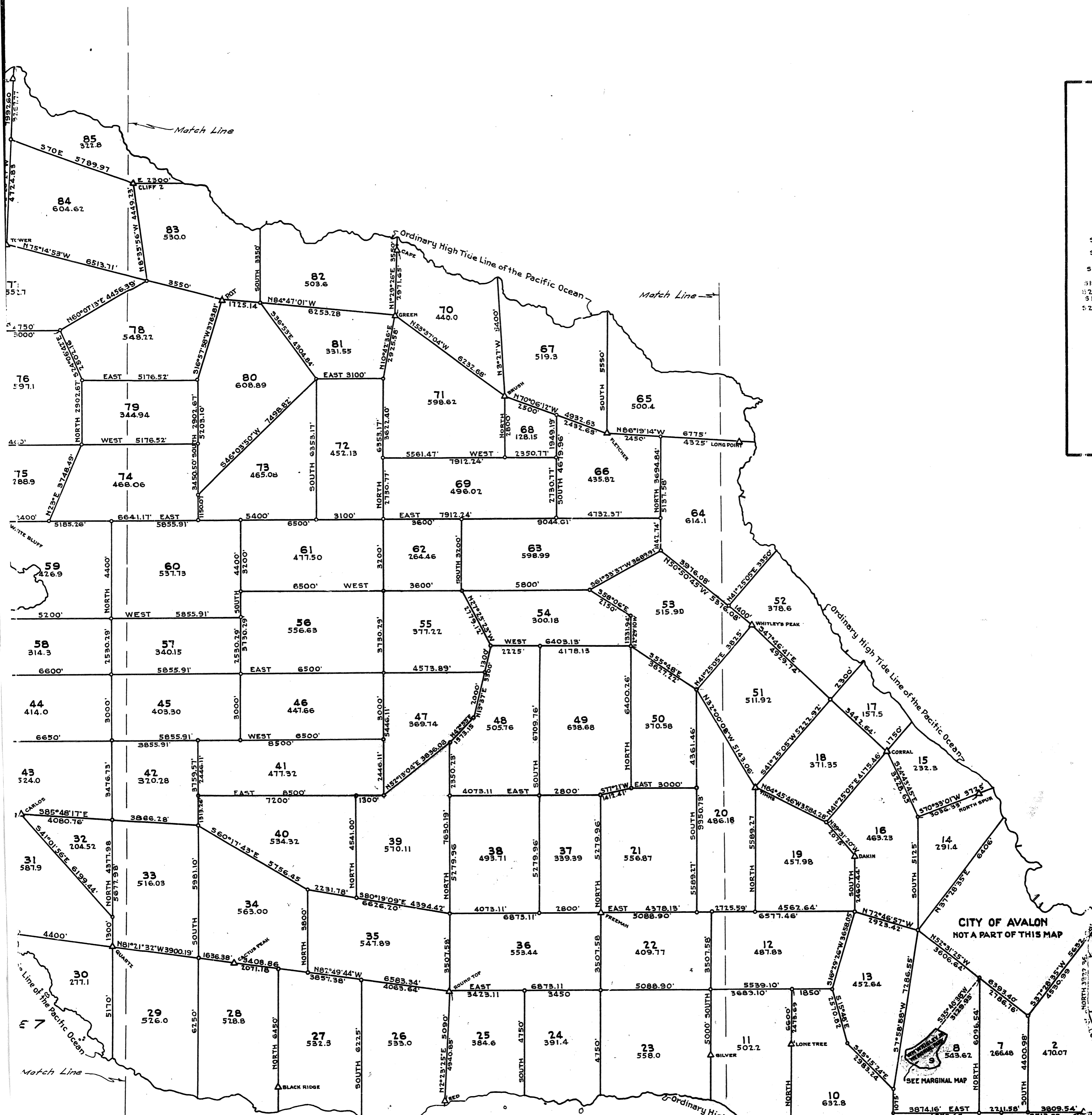


L.A.C.A. MAP NO. 59
 ASSESSORS MAPS BOOK 1 PAGE 7

L.A.C.A. MAP NO. 59
 ASSESSORS MAPS BOOK 1 PAGE 7

A	1	OF	A	3
				59



L.A.C.A. MAP NO. 59
ASSESSOR'S MAPS BOOK 1 PAGE 7

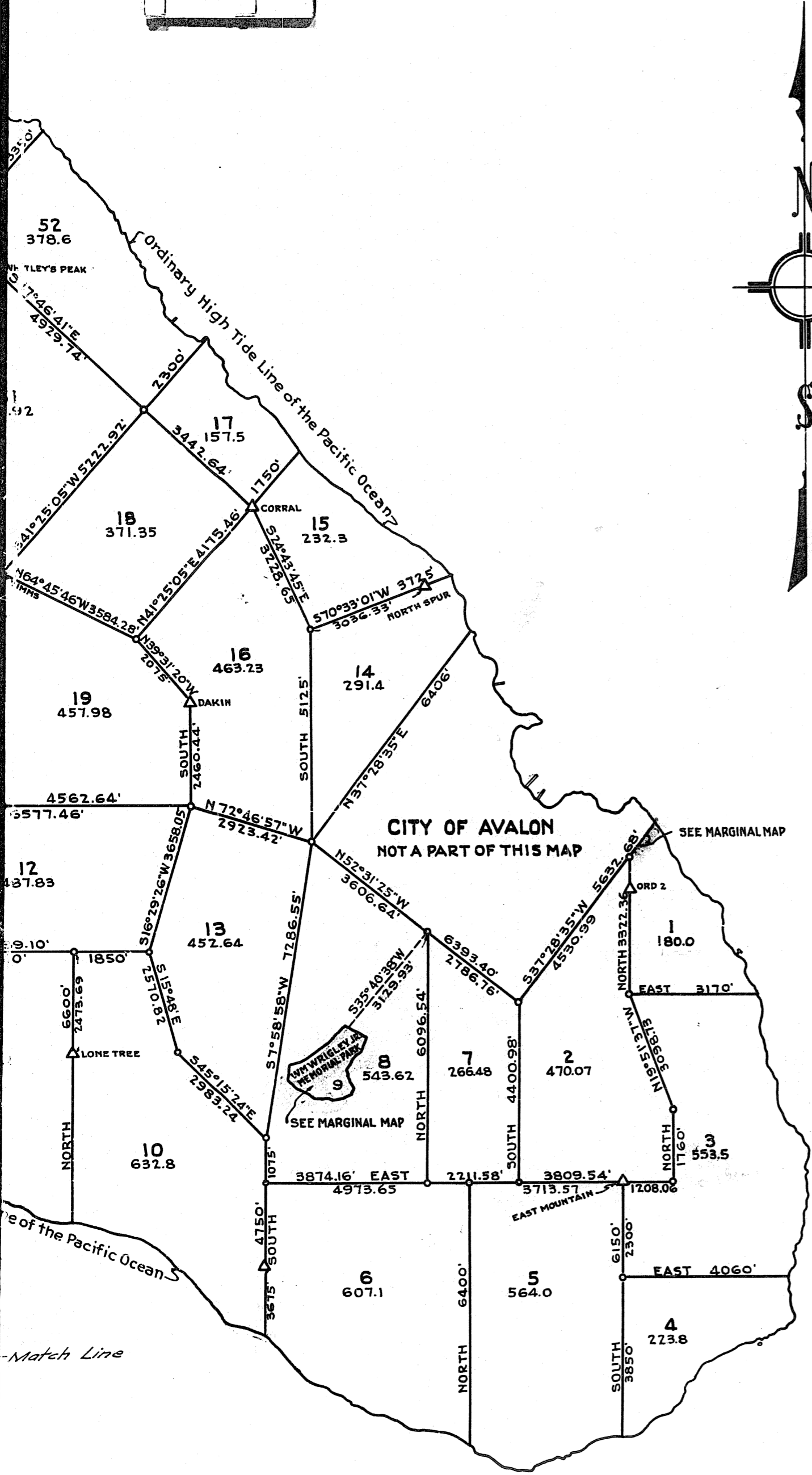
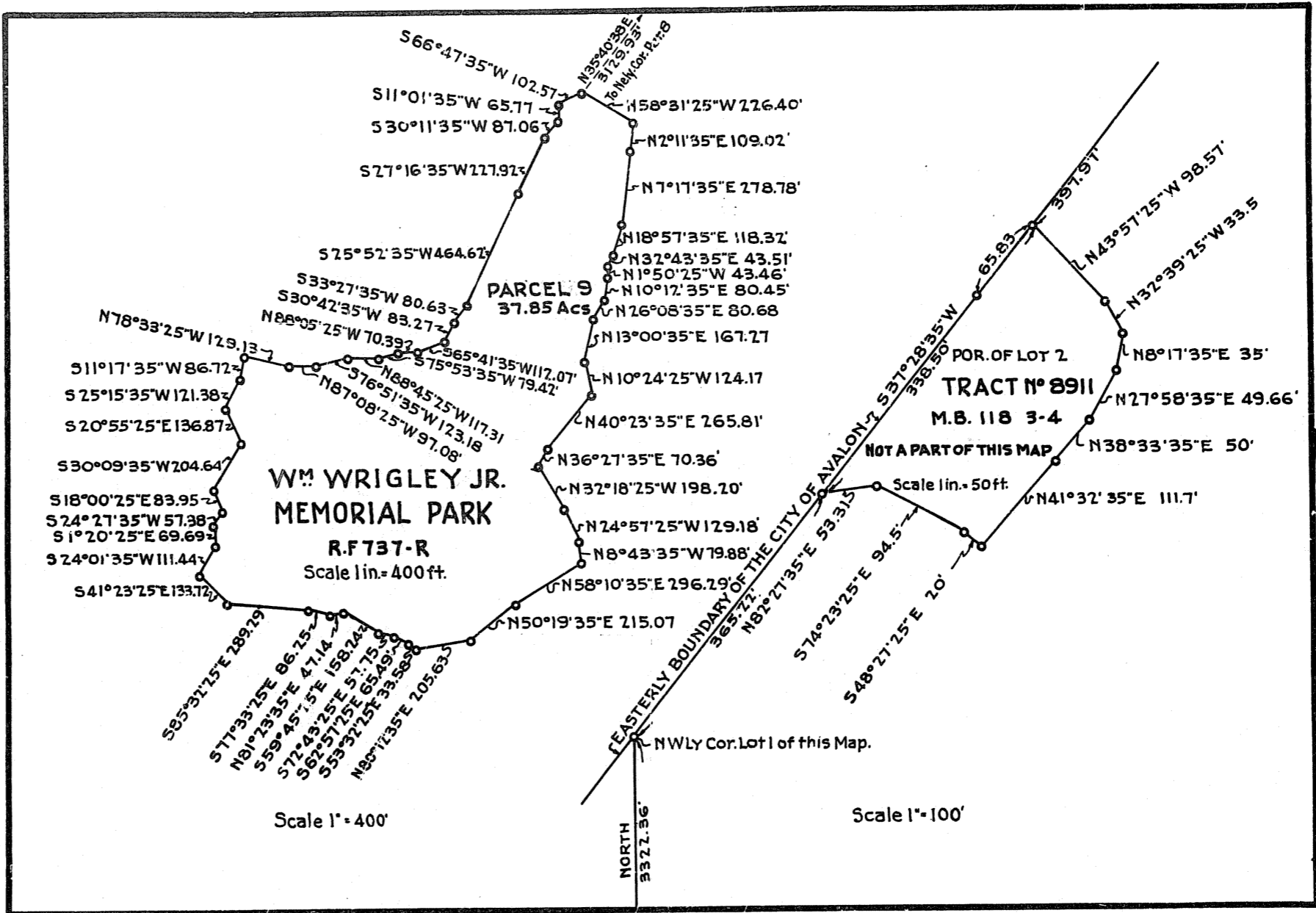
A 2 OF A 3
59

511
525
520
530
518°
524°
51°2
524°
54

511
525
520
530
518°
524°
51°2
524°
54

A 3 OF A 3

59



I hereby certify that I am the Vice President of the Santa Catalina Island Co. and that said Company is the Owner of the land included within the numbered parcels shown on this map, subject to the right of the United States of America to select 20 acres for Light House Purposes at the Harbor of Santa Catalina with the right of way to and from the same as reserved in the Patent from the United States of America recorded in Book 1 Page 81 of Patents Records of Los Angeles County. This map, consisting of one sheet and designating parcels numbered 1 to 105, inclusive, for the description of land by reference thereto for assessment purposes is hereby offered for filing with the Assessor of the County of Los Angeles under provisions of Section 326 of the Revenue and Taxation Code of the STATE OF CALIFORNIA this 19th day of February, 1947.

H. H. Slaugh
 H. H. SLAUGH,
 VICE PRESIDENT, SANTA CATALINA ISLAND COMPANY

**MAP OF
 SANTA CATALINA ISLAND**

Being part of Santa Catalina Island as shown on plat thereof recorded in Book 1, Pages 90 to 92, inc. of Patents, in the Office of the Recorder of the County of Los Angeles, State of California.
 Scale 1" = 2000'
 Verne T. Bunker R.E.#4843 November 1946

Basis of this Map is a system of arbitrary coordinates of selected triangulation stations computed in accordance with methods defined in U.S.C.&G.S. Special Publication No. 71.
 The central meridian of the system is at Long. 118°27' West. This Map is a compilation of Official Records, checked, and tied together by field surveys in February 1946.

O = LOT NUMBER
 000.0 = LOT ACREAGE

Examined April 2, 1952
 WILLIAM J. FOX, County Surveyor
 By *Jarrett A. Harris*
 Deputy

I hereby certify that the Board of Supervisors of the County of Los Angeles, State of California, on March 4, 1947, meeting in regular session, approved the Assessor's system and manner of numbering the parcels shown on this map, in accordance with the provisions of Section 327 of the Revenue and Taxation Code.

J. F. MORONEY, County Clerk
 of the County of Los Angeles, State of California, and ex-officio clerk of the Board of Supervisors of said County.
 By *Frederic Rotman*
 Deputy

Recorded Feb. 28, 1952
 Neg. 638.

L.A.C.A. Map No. 59.
 ASSESSOR'S MAPS BOOK 1 PAGE 7
 SEE ALSO F.M. 12418