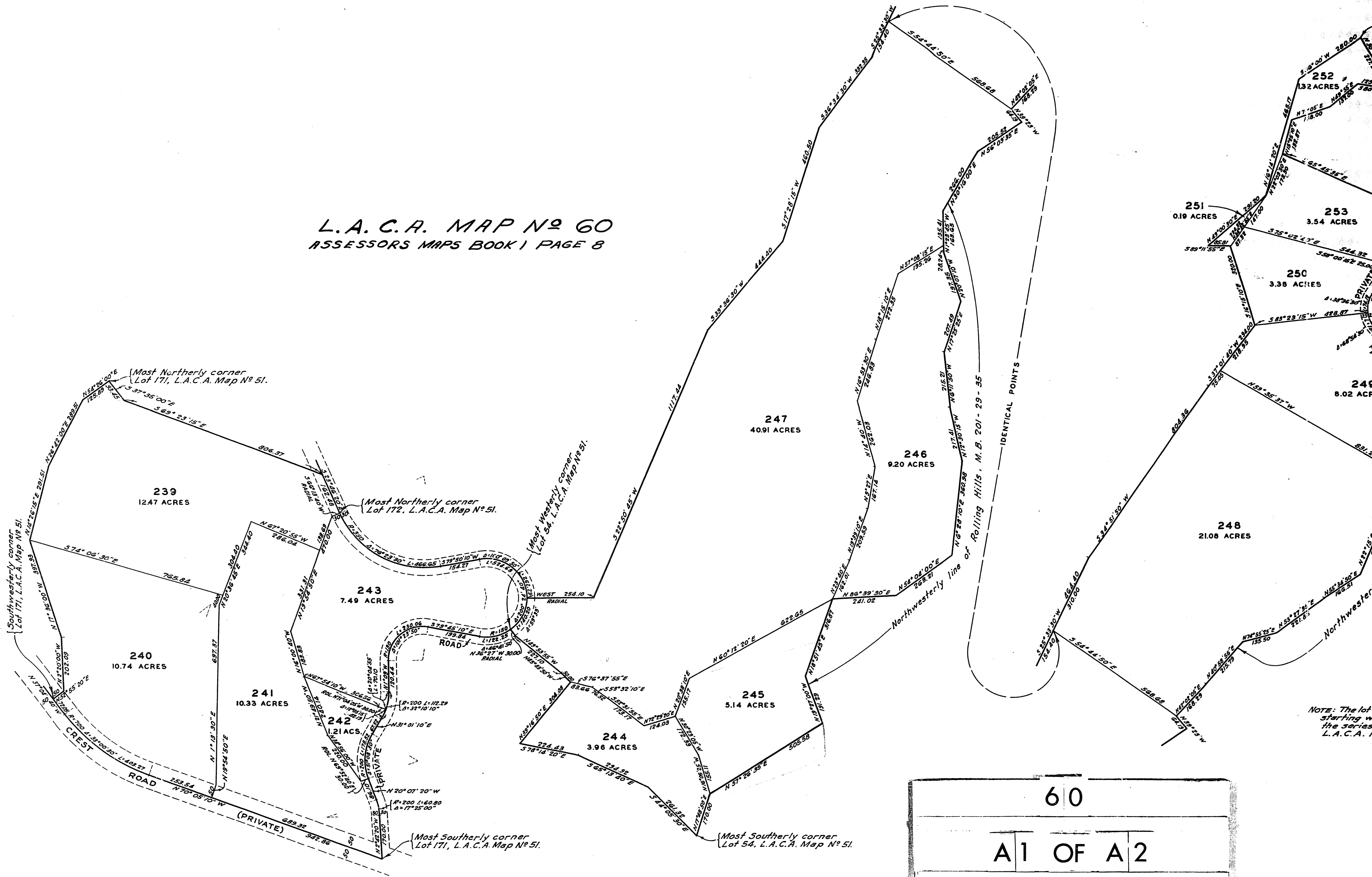
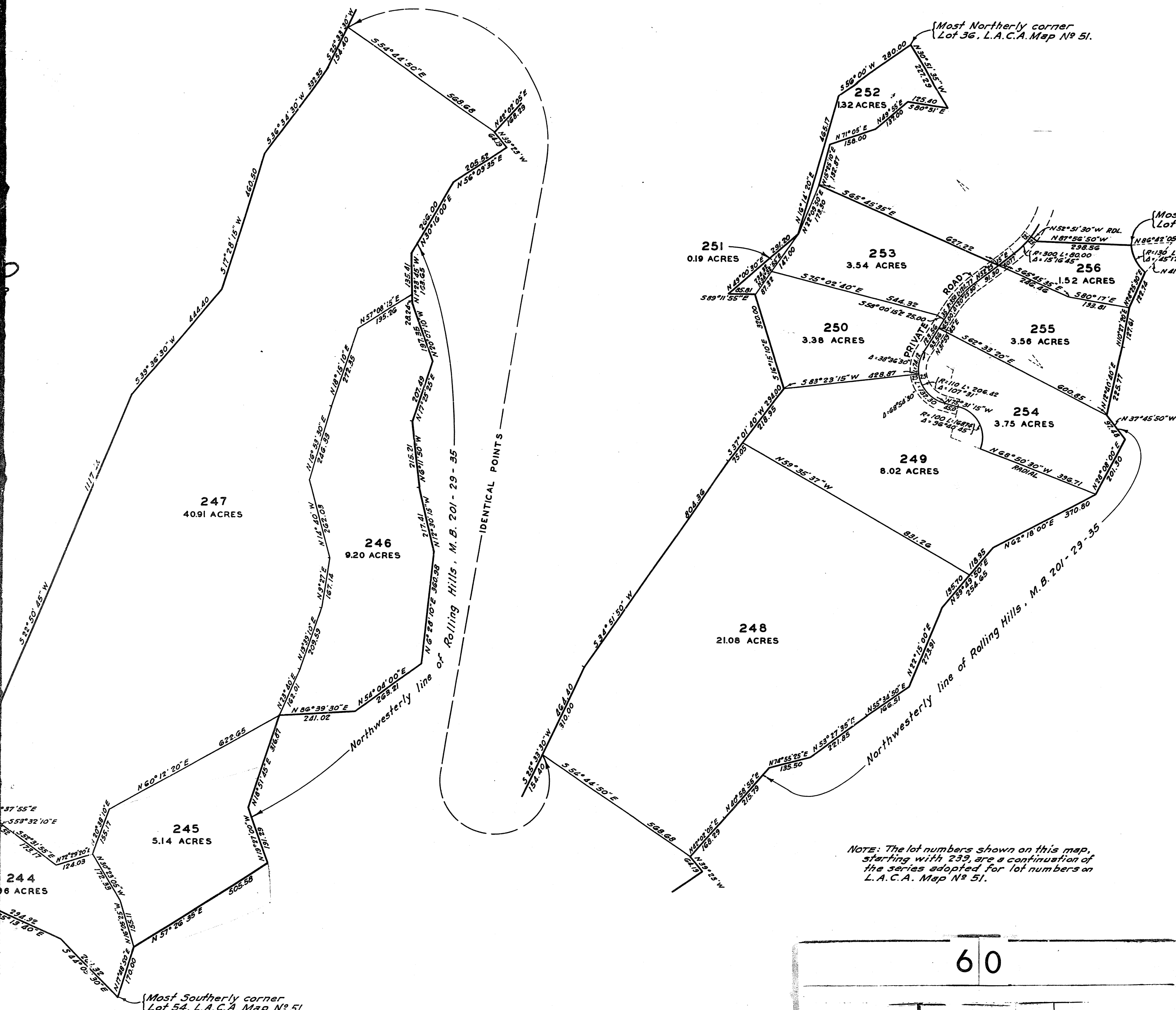


L.A.C.A. MAP NO 60
ASSESSORS MAPS BOOK 1 PAGE 8



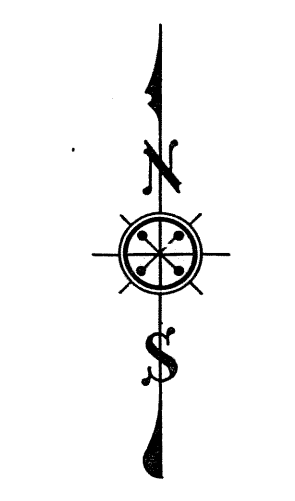


I hereby certify that the Board of Supervisors of the County of Los Angeles, State of California, on March 4, 1947 meeting in regular session, approved the Assessor's system and manner of numbering the parcels shown on this map, in accordance with the provisions of Section 327 of the Revenue and Taxation Code

J. F. MORONEY, County Clerk of the County of Los Angeles, State of California, and ex-officio clerk of the Board of Supervisors of said County

By David Johnson Deputy

Examined April 2, 1952
 WILLIAM J. FOX, County Surveyor
 By Harold A. Harris Deputy



MAP OF
 A PORTION OF LOT H
 RANCHO LOS PALOS VERDES
 BEING A REDIVISION OF LOTS 36, 54,
 171 AND 172 OF L. A. C. A. MAP NO. 51,
 ON FILE IN THE OFFICE OF THE
 COUNTY ASSESSOR OF THE COUNTY
 OF LOS ANGELES.

COMPILED BY
 ALFRED JONES - COUNTY SURVEYOR
 FEB. 1947
 W. J. H.

NOTE: The lot numbers shown on this map, starting with 239, are a continuation of the series adopted for lot numbers on L. A. C. A. Map No 51.

60
 A 2 OF A 2

L. A. C. A. MAP NO. 60
 ASSESSORS MAPS, BOOK 1 PAGE 8

ALJ 626